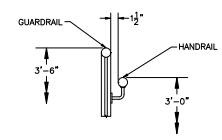
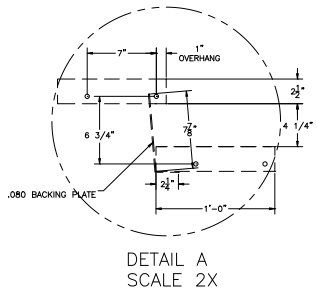
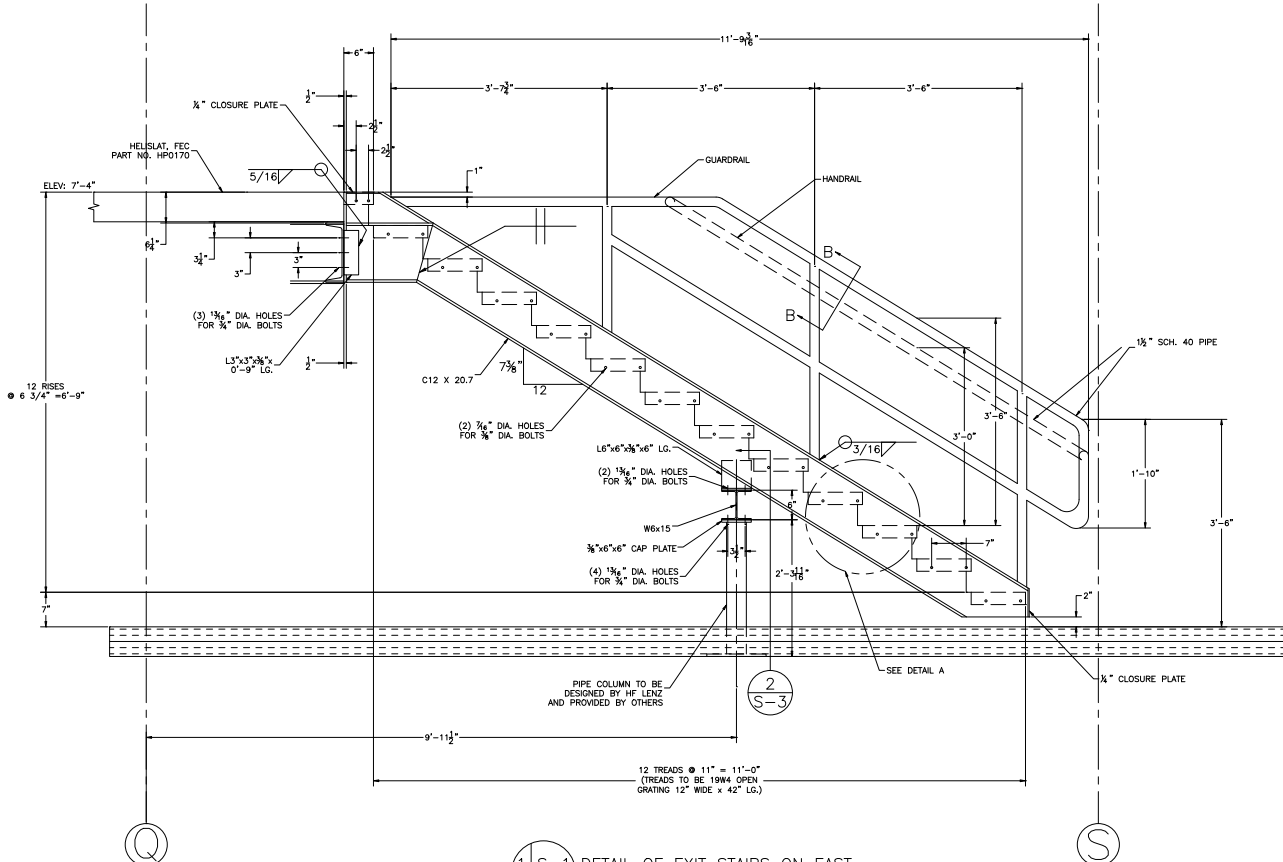


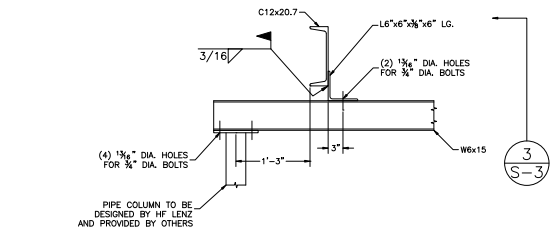
THIS DOCUMENT IS THE PROPERTY OF FEC HELIPORTS, A DIVISION OF FEDERAL EQUIPMENT COMPANY. CREATION DATE: 10/2007. INFORMATION CONTAINED ON THIS DOCUMENT SHALL NOT BE DISCLOSED TO OTHERS, USED FOR REPRODUCTION, OR REPRODUCED IN ANY MANNER WITHOUT THE EXPRESSED WRITTEN PERMISSION OF FEC HELIPORTS, A DIVISION OF FEDERAL EQUIPMENT COMPANY.

REVISION BLOCK

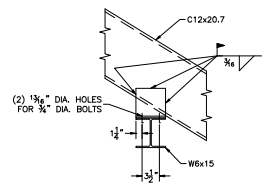
REVISION:	DATE:	REVISION NOTES:
A	8/3/07	MADE CHANGES PER MOVING WALKWAY FROM NORTHEAST TO SOUTHWEST CORNER
B	8/8/07	CHANGED NOTE AND ADDED DIMENSIONS
C	8/13/07	EXTENDED COLUMN TO ROOFTOP STEEL AND UPDATED DETAIL 2



1 S-1
S-3
DETAIL OF EXIT STAIRS ON EAST SIDE OF DECK

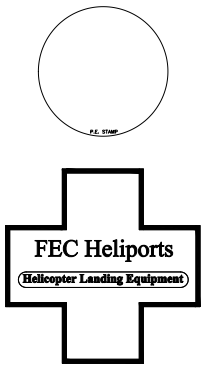


2 S-3
S-3
DETAIL OF COLUMN TO W6x15 TO STAIR CONNECTION



3 S-3
S-3
DETAIL OF COLUMN TO W6x15 TO STAIR CONNECTION

BUFFALO GENERAL HOSPITAL
100 HIGH ST.
BUFFALO, NY 14203



A Division of Federal Equipment Company, 3298 River rd, Cincinnati, Ohio 45233 (513) 621-5260 (313) 621-0524 Fax www.FECHeliports.com

DRAWN BY:	CHECKED BY:
JDB	JJS
JOB NO.	9216
DATE:	7/18/07
EMERGENCY EXIT STAIR DETAIL SCALE: 1" = 1'-0"	
DWG SIZE:	REV LTR:
D	C
S-3	