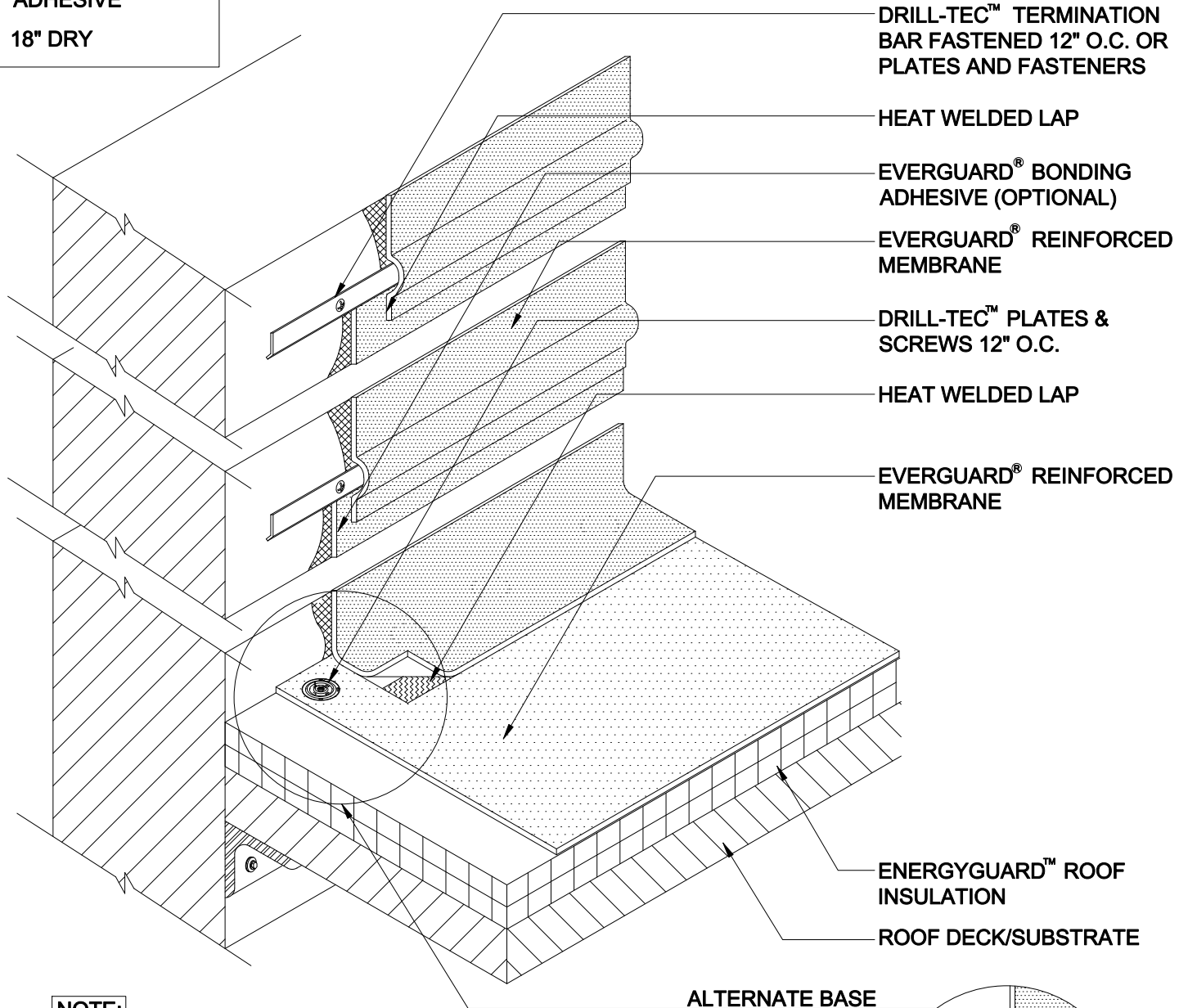


**INTERMITTENT  
FASTENING KEY**

**54" WITH BONDING  
ADHESIVE**

**18" DRY**



**NOTE:**

1. 18" MAX. DIMENSION FOR LOOSE-APPLIED FLASHINGS.
2. 54" MAX. DIMENSION FOR FULLY ADHERED FLASHINGS.
3. PLATES & SCREWS 6" O.C. REQ'D FOR BA SYSTEMS.
4. FOR INSULATION THICKNESS GREATER THAN 8" CONTACT GAFMC CONTRACTOR SERVICES FOR ALTERNATE MEMBRANE ATTACHMENT REQUIREMENTS.
5. APPLY EVERGUARD® TPO CUT EDGE SEALANT TO ALL CUT REINFORCED TPO EDGES ( REFER TO DETAIL MA/FA/BA 115 ).

**ALTERNATE BASE  
REFER TO 307**

