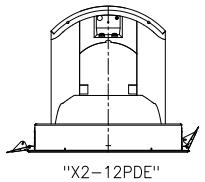
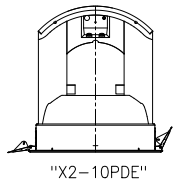
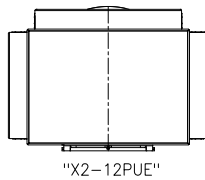
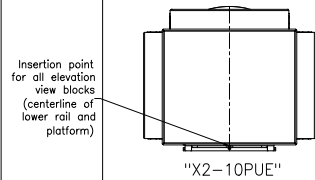
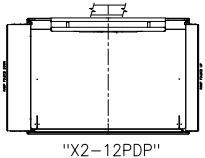
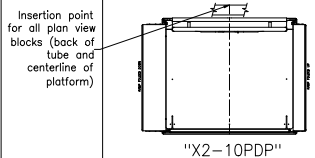
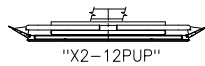
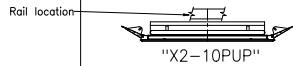


PLATFORMS WITHOUT ARMS

1000mm x 800mm
(39 3/8" x 31 1/2")
PLATFORM

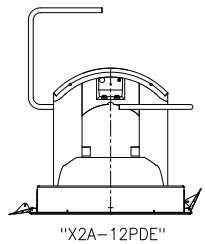
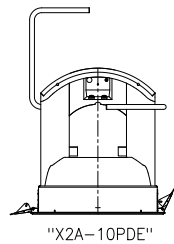
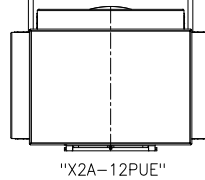
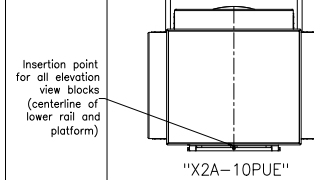
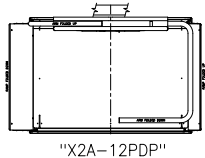
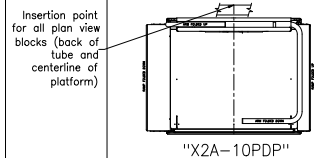
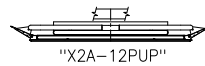
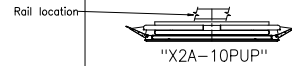
1220mm x 800mm
(48" x 31 1/2")
PLATFORM



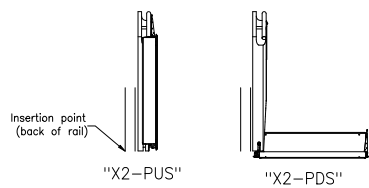
PLATFORMS WITH ARMS

1000mm x 800mm
(39 3/8" x 31 1/2")
PLATFORM

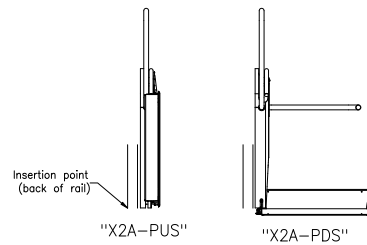
1220mm x 800mm
(48" x 31 1/2")
PLATFORM



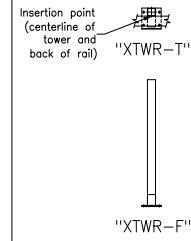
SIDE VIEW PLATFORMS WITHOUT ARMS
(BOTH PLATFORM SIZES ARE THE SAME FROM THE SIDE)



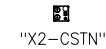
SIDE VIEW PLATFORMS WITH ARMS
(BOTH PLATFORM SIZES ARE THE SAME FROM THE SIDE)



"X" TOWER



CALL STATION



NOTES:

- ALL BLOCKS ARE DRAWN IN MILLIMETERS TO FULL SCALE.
- THE NAME OF EACH BLOCK IS SHOWN IN QUOTES DIRECTLY BENEATH THE BLOCK.
- THE LAST 3 LETTERS OF EACH PLATFORM BLOCK REFER TO ITS TYPE:
 - PUP = PLATFORM FOLDED UP IN PLAN VIEW
 - PDP = PLATFORM FOLDED DOWN IN PLAN VIEW
 - PUE = PLATFORM FOLDED UP IN ELEVATION VIEW
 - PDE = PLATFORM FOLDED DOWN IN ELEVATION VIEW
 - PUS = PLATFORM FOLDED UP (SIDE VIEW)
 - PDS = PLATFORM FOLDED DOWN (SIDE VIEW)
- THE BLOCKS OF THE PLATFORM FOLDED DOWN SHOW THE LEFT RAMP FOLDED DOWN (WITH THE LEFT ARM UP) AND THE RIGHT RAMP FOLDED UP (WITH THE RIGHT ARM DOWN). THESE BLOCKS CAN BE MIRRORRED TO SHOW THE PLATFORM TRAVELING IN THE OPPOSITE DIRECTION.

The information and design disclosed herein was originated by and is the property of Garaventa (Canada) Ltd. Garaventa (Canada) Ltd. reserves all patent, design, manufacturing, reproduction, use and sales rights hereto and to any article disclosed herein, except to the extent rights are expressly granted to others. Garaventa (Canada) Ltd. cannot be held responsible for incorrect designs created using these drawings. Garaventa (Canada) Ltd. may change any aspect of these drawings without prior notice.

A	INITIAL RELEASE	04/20/00	LD
DWG REV	DESCRIPTION	DATE	DRAWN
FINISH: N/A			
<p>The information contained in this drawing constitutes the Intellectual Property, including, but not limited to, knowledge, trade secrets, and proprietary information which is the exclusive property of Garaventa (Canada) Limited. All information contained in this drawing is to be held in the strictest confidence by the recipient, and is not to be copied, disclosed to, or transmitted to any third parties without the express written authorization of Garaventa (Canada) Limited. © 1998 Garaventa (Canada) Limited.</p>			
UNLESS OTHERWISE SPECIFIED, ALL DIMENSIONS ARE IN MILLIMETERS.	TOLERANCES IOL X, X.X N/A X.XX N/A X.XXX N/A ANGULAR N/A	<p>GARAVENTA (CANADA) LIMITED 7505 - 134 STREET SURREY, BC, CANADA V3M 7B3 PH: (604) 594-0422 FAX: (604) 594-0915 INTERNET ADDRESS: www.garaventa.ca</p>	
DATE	04/20/00	<p>GARAVENTA WEB SITE REFERENCE DRAWING XPRESS II BLOCKS, METRIC</p>	
DRAWN BY	LD	<p>STATUS</p>	
DESIGNED BY		<p>SCALE 1:20</p>	
CHECKED BY		<p>PROJECTION</p>	
APPROVED BY		<p>SIZE A1</p>	