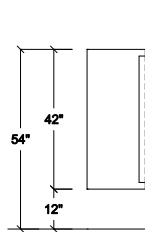


A TYPICAL CEILING HUNG ELEVATION



FOR A DETAILED COPY OF OUR INSTALLATION INSTRUCTIONS PLEASE VISIT OUR WEBSITE AT WWW.GLOBALPARTITIONS.COM

MATERIAL TYPE:

POLYMER

COLOR:

HARDWARE:

BANK VAULT HINGES, BRUSHED
FINISH DOOR HARDWARE

CONTINUOUS (54") #304 STAINLESS
STEEL #4 SATIN FINISH PIANO HINGES

8" WRAP AROUND HINGES, ALUMINUM
DOOR HARDWARE, BRIGHT FINISH

INTEGRAL HINGES, BRUSHED

FINISH DOOR HARDWARE

ANODIZED ALUMINUM STIRRUP BRACKETS
(3) PER CONNECTION

CONTINUOUS ANODIZED ALUMINUM BRACKETS

CONTINUOUS STAINLESS STEEL BRACKETS

CONTINUOUS PLASTIC BRACKETS

PLASTIC SHOES

STAINLESS STEEL SHOES

PLASTIC BRACKET AND SHOE COLOR:

DOOR LATCH:

SLIDE LATCH

COMMENTS:

STANDARD 8" HINGE AND STIRRUP
BRACKETS SHOWN

GLOBAL
2171 LIBERTY HILL ROAD, EASTANOLLEE, GA 30538

NO.	DATE:	REVISION	JOB:	SCALE: 3/8" = 1'
			LOC:	BY:
			ARCH:	DATE:
			CONTR:	SHEET:
		P.O. #	DIST:	JOB #