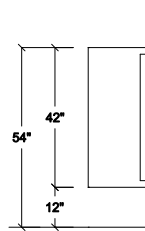


**A TYPICAL FLOOR-ANCHORED OVERHEAD BRACED ELEVATION**



**MATERIAL TYPE:**

POLYMER

**COLOR:**

**HARDWARE:**

BANK VAULT HINGES, BRUSHED  
FINISH DOOR HARDWARE

CONTINUOUS (54") #304 STAINLESS  
STEEL #4 SATIN FINISH PIANO HINGES

8" WRAP AROUND HINGES, ALUMINUM  
DOOR HARDWARE, BRIGHT FINISH

INTEGRAL HINGES, BRUSHED

FINISH DOOR HARDWARE

ANODIZED ALUMINUM STIRRUP BRACKETS  
(3) PER CONNECTION

CONTINUOUS ANODIZED ALUMINUM BRACKETS

CONTINUOUS STAINLESS STEEL BRACKETS

CONTINUOUS PLASTIC BRACKETS

PLASTIC SHOES

STAINLESS STEEL SHOES

**PLASTIC BRACKET AND SHOE COLOR:**

**DOOR LATCH:**

SLIDE LATCH

**COMMENTS:**

STANDARD 8" HINGE AND STIRRUP  
BRACKETS SHOWN

**GLOBAL**  
2171 LIBERTY HILL ROAD, EASTANOLLEE, GA 30538

FOR A DETAILED COPY OF OUR INSTALLATION INSTRUCTIONS PLEASE VISIT OUR WEBSITE AT [WWW.GLOBALPARTITIONS.COM](http://WWW.GLOBALPARTITIONS.COM)

NO.	DATE:	REVISION	JOB:	SCALE: 3/8" = 1'
			LOC:	BY:
			ARCH:	DATE:
			CONTR:	SHEET:
		P.O. #	DIST:	JOB #