



® 4242 Baldwin Boulevard
 Corpus Christi, Texas
 USA 78405-3399
 Tel: 800-531-3111, 361-888-5591
 Fax: 800-531-3108, 361-888-6510
 www.hortondoors.com
 The Automatic Choice

ARCHITECTURAL DETAILS

AUTOMATIC COMMERCIAL SLIDE DOORS

Profiler® Series 2000 Linear Drive

A2.14

Type: 010/110 SpaceSaver™ X-O-SX

July 11

Standard Packages

Unit Width	Slide Openings	Breakout Opening	Slide Panel Width	Sidelite Width	Rough Opening Width
10'-6" (3200)	3'-0" (914)	3'-3 1/2" (1003)	3'-6" (1067)	3'-7 1/2" (1105)	10'-6 1/2" (3213)
12'-0" (3658)	3'-6" (1067)	3'-9 1/2" (1156)	4'-0" (1219)	4'-1 1/2" (1257)	12'-0 1/2" (3670)

Unit Height: 7'-6" (2286)	Rough Opening Height: 7'-6 1/4" (2292)	Anodized Finish: Clear or Dark Bronze
Glazing: Standard unit prep'd for 1/4" (6) glass. Glass by others.		
Threshold: 1/2" (13) tall x 4" (102) wide (See page A5.3).		

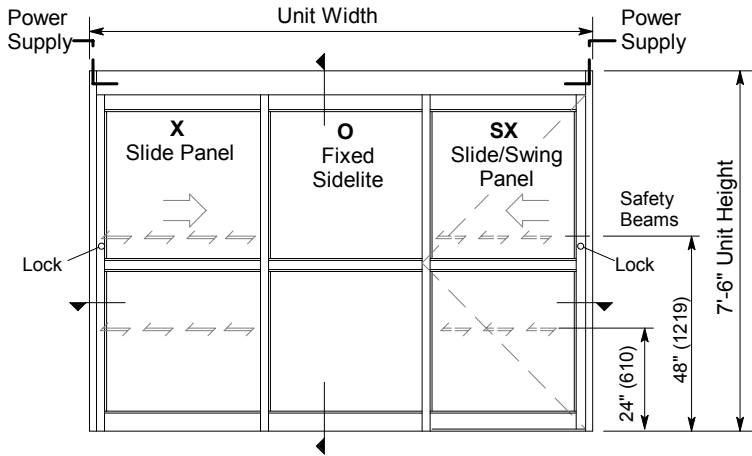
Options

- Custom unit height to 8'-6".
- Custom mid-rails and bottom rails.
- Transom.
- Medium or wide stile construction (slide opening will be reduced).
- Custom anodized or paint finish or stainless steel cladding

See details for options starting on p. A5.0 and Architectural Specifications on p. A6.0.

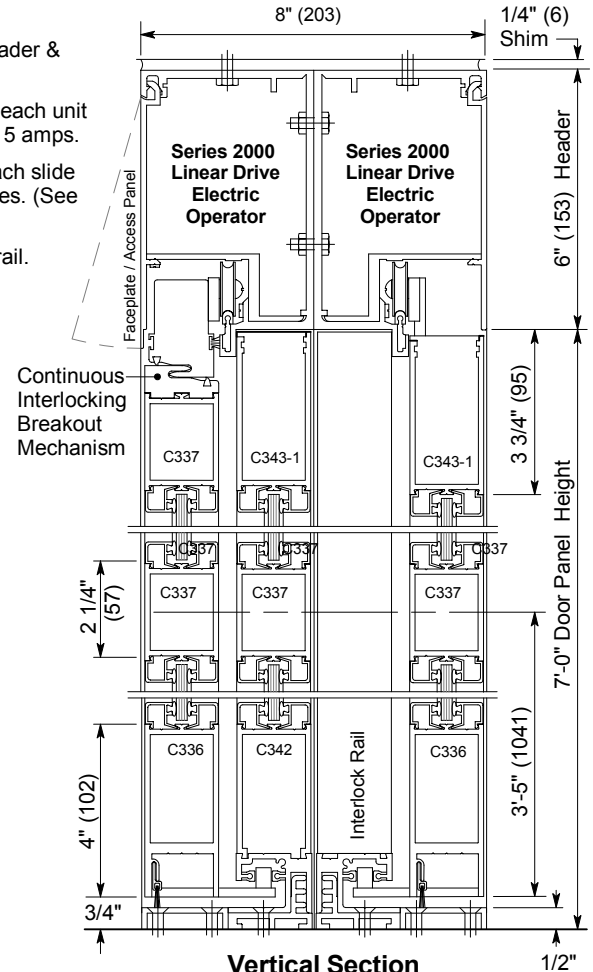
Installation and Operation

- Door perimeter mounted within rough opening with 1/4" minimum shim space at header & jambs. Finish floor not to exceed 1/4" out of level. (See page A.3)
- Electrical: Provide 120 VAC, 60 cycle, single phase, 15 amp service (in conduit) to each unit on dedicated 20 amp circuit breaker routed to header. Maximum current draw is 3.15 amps.
- Door actuated with header mounted motion sensors at interior and exterior (over each slide opening) for detection of traffic in each direction. Door closes after time delay expires. (See page A.4). Unit can also be set up for 1-way traffic thru each slide opening.
- Manual Locking: Exterior keylock and interior thumbturn provided at vertical strike rail. (Optional fail-safe or fail-secure autolock)

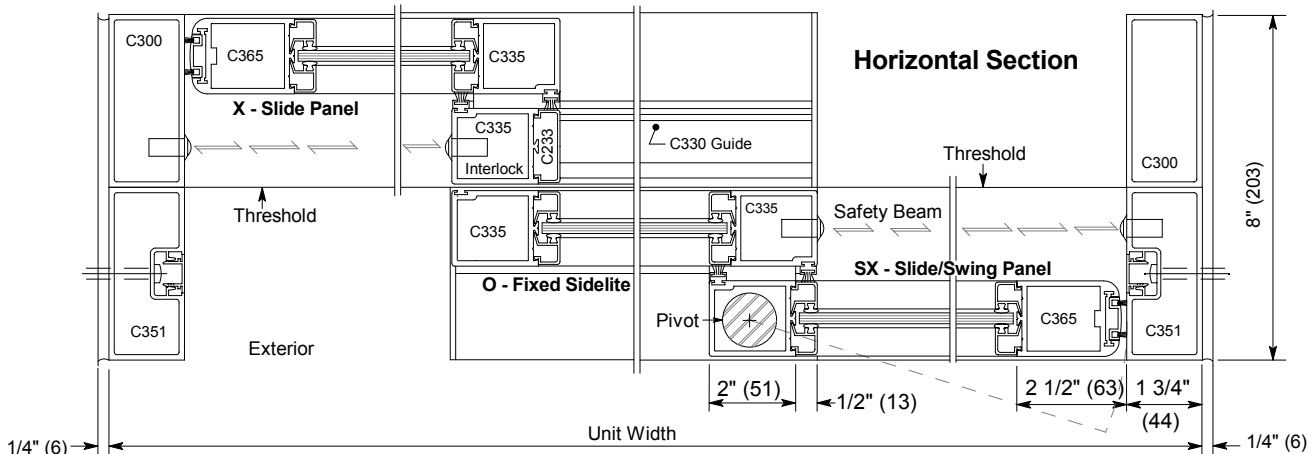


Exterior Elevation and Floor Plan

SX panels can breakout 90° from any position of slide movement with maximum 50 lbf. of force at lock stile



Vertical Section
Door shown in open position



Horizontal Section