

WINDOW HEAD — WOOD STUD/EXTERIOR SIDING

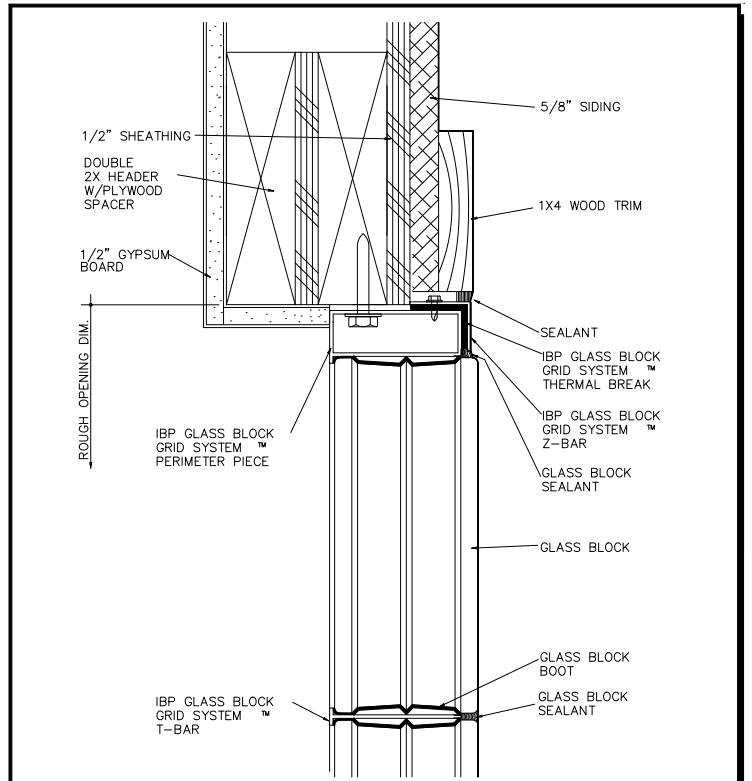
1/2 FULL SCALE

Because IBP has no control over installation, workmanship, accessory materials, or conditions of application, no representation or warranty, expressed or implied, either as to MERCHANTABILITY OR FITNESS FOR A PARTICULAR PURPOSE is made as to the performance or results of an installation of this product.

IBP glass block grid system™
 WINDOWS SKYLIGHTS FLOORS SHOWERS WALLS
 Innovative Building Products, Inc. • 2817 West 7th St. • Fort Worth, TX 76107
 Phone: (817) 332-9124 • Fax: (817) 332-9128
 www.ibpglassblock.com

IBP Glass Block Grid System™
 is a trademark of Innovative Building Products, Inc. • Fort Worth, TX, USA
 U.S. Patent Numbers:
 4294449 • 4999864 • 5003744 • 5042210 • 5218806
 Australia: 634975 • 638060 Canada: 1328979 • 2015714
 Brazil: P1904269-7 • Mexico: 2010207 • 2017183 • Mexico: 62,420 • 42,796
 European: 0396075 • 0396374 • Mexico: 165468 • 172717
 New Zealand: 230417 • 230568 Other patents pending worldwide

WH-2
 AUG 01



WINDOW HEAD — WOOD STUD/EXTERIOR SIDING

1/2 FULL SCALE

Because IBP has no control over installation, workmanship, accessory materials, or conditions of application, no representation or warranty, expressed or implied, either as to MERCHANTABILITY OR FITNESS FOR A PARTICULAR PURPOSE is made as to the performance or results of an installation of this product.

IBP glass block grid system™
 WINDOWS SKYLIGHTS FLOORS SHOWERS WALLS
 Innovative Building Products, Inc. • 2817 West 7th St. • Fort Worth, TX 76107
 Phone: (817) 332-9124 • Fax: (817) 332-9128
 www.ibpglassblock.com

IBP Glass Block Grid System™
 is a trademark of Innovative Building Products, Inc. • Fort Worth, TX, USA
 U.S. Patent Numbers:
 4294449 • 4999864 • 5003744 • 5042210 • 5218806
 Australia: 634975 • 638060 Canada: 1328979 • 2015714
 Brazil: P1904269-7 • Mexico: 2010207 • 2017183 • Mexico: 62,420 • 42,796
 European: 0396075 • 0396374 • Mexico: 165468 • 172717
 New Zealand: 230417 • 230568 Other patents pending worldwide

WH-2A
 AUG 01