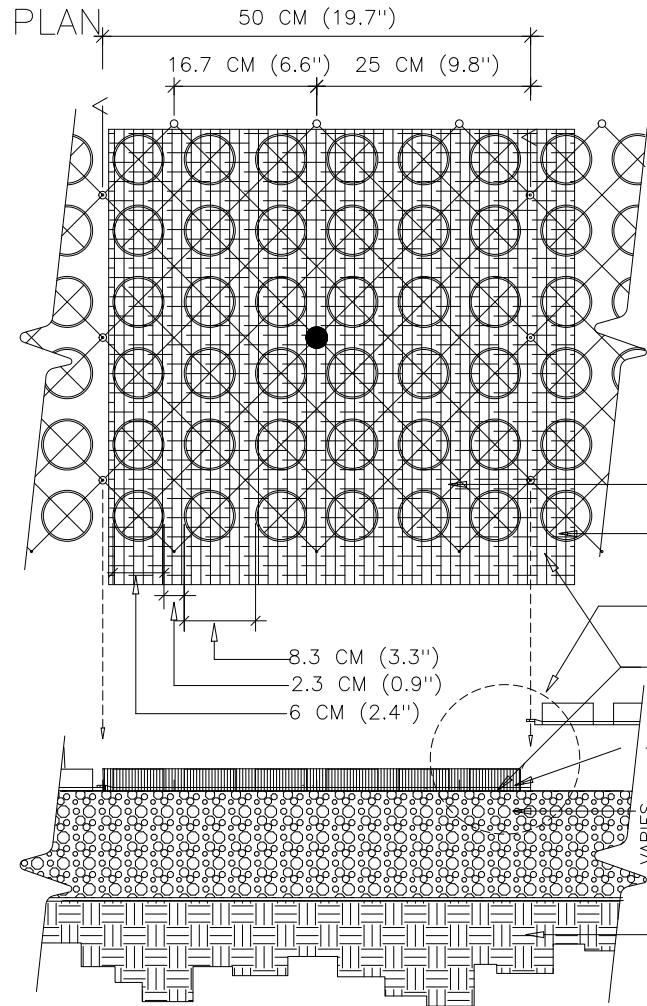


NOTES: TURN OFF DOFF LAYER PRIOR TO PLOTTING.
 HATCH DOFF HATCH LIMITS IN PLAN & ENLARGEMENT TO MATCH YOUR PLOT CONFIG.



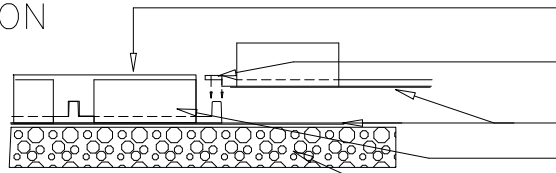
SPECIFICATIONS

UNITS
 UNIT SIZE - 50 CM X 50 CM X 2.5 CM
 AVAILABLE IN 9 STANDARD ROLL SIZES

UNIT WEIGHT - 538 GRAMS (19 OZ.)
 OR 2.2 KG (4.8 POUNDS)
 STRENGTH - 402 KG/CM (5720 PSI)
 COLOR - BLACK (STANDARD)
 RESIN - 100% POST-CONSUMER
 RECYCLED HDPE/LDPE
 FABRIC
 WEIGHT - 3.5 OZ./SY (120 GM/M²)
 TENSILE - 120 LB/FT (585 KG/M²)
 FLOW - 275 GAL/MIN/SF (11,200 L/MIN/M²)
 OPTIONS - CUSTOM FABRIC TO 6 OZ
 AVAILABLE.

GRAVELPAVE2
 ADJACENT GRAVELPAVE2
 SEE ENLARGEMENT BELOW
 FILTER FABRIC ATTACHED TO
 BOTTOM OF GRAVELPAVE2
 FINE GRAVEL - 3/16" OR LESS
 COMPACTED SANDY GRAVEL
 ROAD BASE
 AS PER LOADING
 REQUIREMENTS
 VARIES
 COMPACTED SUBGRADE,
 95% MODIFIED PROCTOR DENSITY

SECTION



TOP OF GRAVEL
 GRAVELPAVE2 ATTACH WITH
 SNAP FIT FASTENERS
 FILTER FABRIC - OVERLAPPING JOINTS
 FILL RING SECTION WITH
 GRAVEL FILL - 3/16" MINUS
 COMPACTED SANDY GRAVEL
 BASE COURSE

ENLARGEMENT

TYPICAL GRAVELPAVE DETAIL

NOT TO SCALE
 Invisible

Structures, Inc.

CHOOSE THIS PRODUCT FOR REINFORCING GRAVEL WEARING SURFACES

1600 Jackson Street
 Golden, Colorado 80404
 800-233-1510 OR 303-233-8383
 FAX: 303-233-8282
 Version 01/03

1 OF 1