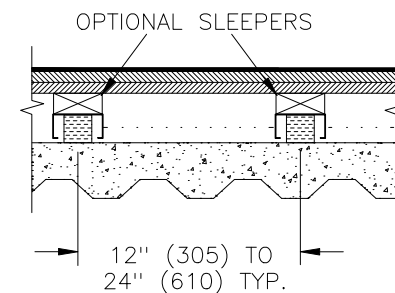


#### INSTALLATION SEQUENCE

1. ADHERE CHANNEL ISOLATORS TO (OPTIONAL) SLEEPERS
2. SPACE CHANNEL ASSEMBLY PER CONSTRUCTION DRAWINGS/GUIDELINES
3. PLACE LOW DENSITY ACOUSTICAL ABSORPTION MATERIAL (OPTIONAL).
4. INSTALL FIRST LAYER OF PLYWOOD ACROSS CHANNELS OR SLEEPERS AND SCREW IN PLACE.  
BE SURE TO STAGGER SEAMS
5. COVER WITH (OPTIONAL)\* BUILDERS FELT AND / OR TROWELED WOOD ADHESIVE.
6. INSTALL SECOND LAYER OF PLYWOOD, CROSS LAPPING THE  
FIRST LAYER AND SCREW IN PLACE.
7. APPLY FINISH FLOOR PER MANUFACTURER

\* TO REDUCE SQUEAKING BETWEEN PLYWOOD LAYERS



DIMENSION FORMAT: IN (mm)



TITLE  
MODEL FC  
WITH WOOD FLOOR  
INSTALLATION SEQUENCE

LAST DATE  
REVISED  
9/2/08

DRAWN BY  
MDV

DRAWING NO.  
AA001824

AA