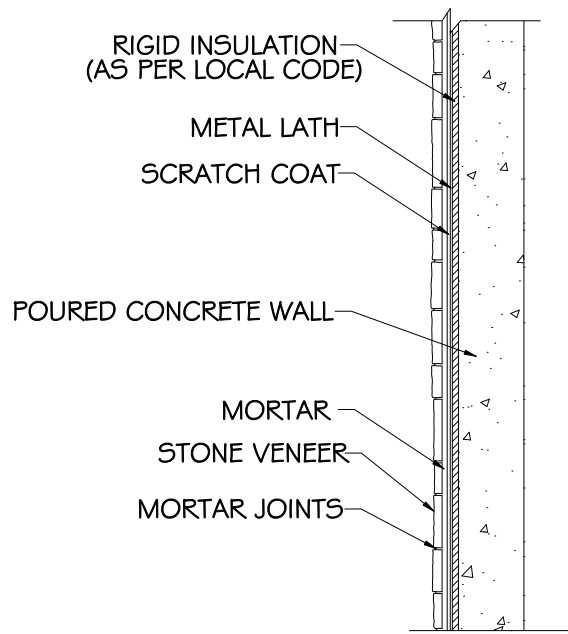


WITH NO INSULATION



WITH INSULATION

THIN VENEER
TYPICAL SECTION FOR
POURED CONCRETE WALL

SHEET NO.

DATE:
 xxxxxxx

PROJECT:

THIN VENEER
 TYPICAL SECTION AT
 POURED CONCRETE WALL

KRUKOWSKI STONE CO., INC.
 PHONE # 715-693-6300

3781 CTY. RD. C
 MOSINEE, WI 54455

AI

REV'D:
 xxxxxxx