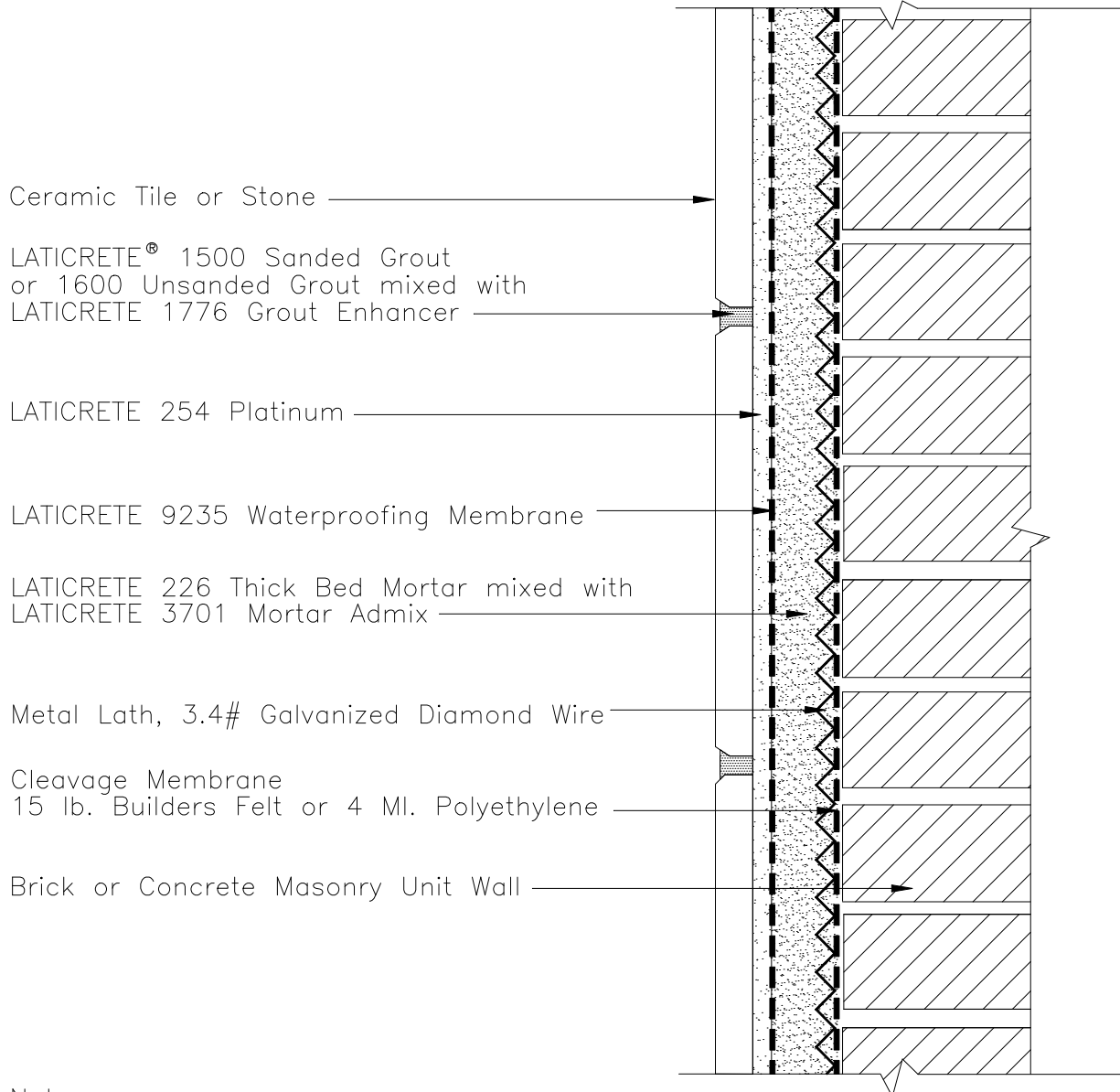


# ES W221 CMU/Brick-Thick Bed with Metal Lath



Ceramic Tile or Stone

LATICRETE® 1500 Sanded Grout  
or 1600 Unsanded Grout mixed with  
LATICRETE 1776 Grout Enhancer

LATICRETE 254 Platinum

LATICRETE 9235 Waterproofing Membrane

LATICRETE 226 Thick Bed Mortar mixed with  
LATICRETE 3701 Mortar Admix

Metal Lath, 3.4# Galvanized Diamond Wire

Cleavage Membrane  
15 lb. Builders Felt or 4 MI. Polyethylene

Brick or Concrete Masonry Unit Wall

Note:  
Vapor Barrier and Insulation –  
Type/Location to be Determined by Design Professional

Revision Date: 5/08

Scale: N.T.S.

AS A PROFESSIONAL COURTESY, LATICRETE OFFERS  
TECHNICAL SERVICES FREE OF CHARGE. THE USER  
MAINTAINS ALL RESPONSIBILITY FOR VERIFYING THE  
APPLICABILITY AND SUITABILITY OF THE TECHNICAL  
SERVICE OR INFORMATION PROVIDED.

(C)2008 LATICRETE INTERNATIONAL, INC. ALL RIGHTS RESERVED. THE RIGHT TO UTILIZE  
LATICRETE DETAILS FOR COMMERCIAL PURPOSES IS GRANTED EXCLUSIVELY TO CONTRACTORS,  
ARCHITECTS, QUANTITY SURVEYORS, ENGINEERS, AND SPECIFICATIONS WRITERS. LATICRETE (R),  
LATAPOXY (R) ARE REGISTERED TRADEMARKS OF LATICRETE INTERNATIONAL, INC. US &  
FOREIGN PATENT AND TRADEMARK OFFICES. MARCA REGISTRADA. ALL OTHER TRADEMARKS ARE  
PROPERTY OF THEIR RESPECTIVE COMPANIES.