

Drawing No. W265
 MVIS

Manufactured Stone, Natural Stone or
 Thin Brick

LATICRETE[®] Masonry Pointing Mortar

LATICRETE Masonry Veneer Mortar

LATICRETE Hydro Ban[™]

LATICRETE 3701 Fortified Mortar Bed

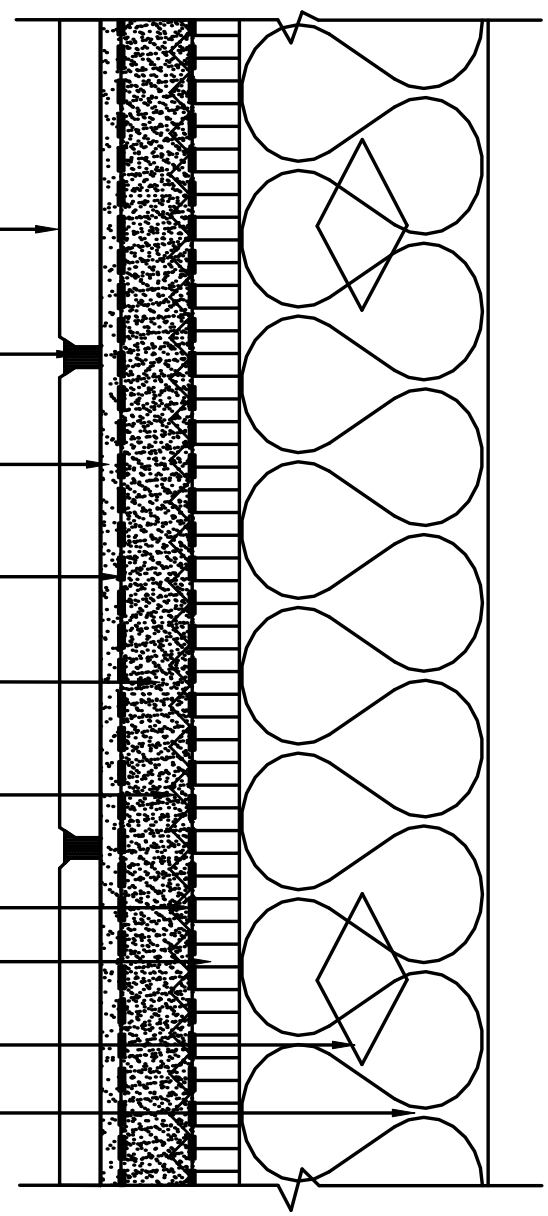
Metal Lath, 3.4# Galvanized Diamond Wire

Cleavage Membrane
 15 lb. Builders Felt or 4 mil Polyethylene

Exterior Rated Sheathing

Steel Stud

Insulation



Note:
 Vapor Barrier and Insulation –
 Type/Location to be Determined by Design Professional

Revision Date: 8/09

Scale: N.T.S.

AS A PROFESSIONAL COURTESY, LATICRETE OFFERS
 TECHNICAL SERVICES FREE OF CHARGE. THE USER
 MAINTAINS ALL RESPONSIBILITY FOR VERIFYING THE
 APPLICABILITY AND SUITABILITY OF THE TECHNICAL
 SERVICE OR INFORMATION PROVIDED.

(C)2009 LATICRETE INTERNATIONAL, INC. ALL RIGHTS RESERVED. THE RIGHT TO UTILIZE
 LATICRETE DETAILS FOR COMMERCIAL PURPOSES IS GRANTED EXCLUSIVELY TO CONTRACTORS,
 ARCHITECTS, QUANTITY SURVEYORS, ENGINEERS, AND SPECIFICATIONS WRITERS. LATICRETE (R),
 LATAPOXY (R) ARE REGISTERED TRADEMARKS OF LATICRETE INTERNATIONAL, INC. US &
 FOREIGN PATENT AND TRADEMARK OFFICES. MARCA REGISTRADA. ALL OTHER TRADEMARKS ARE
 PROPERTY OF THEIR RESPECTIVE COMPANIES.