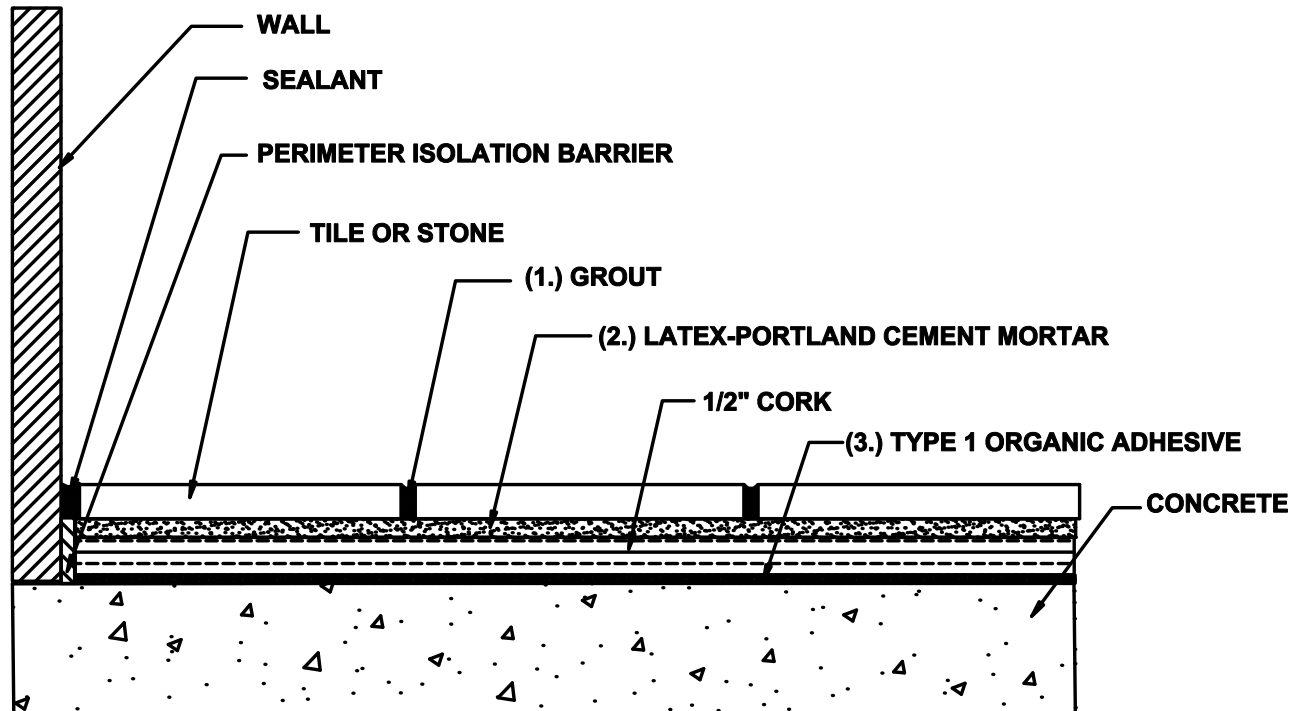


M F 135
Floors, Interior
Cork Underlayment on Concrete
Latex-Portland Cement Mortar with Epoxy Grout
Scale: N.T.S.



MAPEI PRODUCT ASSEMBLY

1. **Grout Options:**
 - A. MAPEI, *Opticolor*[™]
 - B. MAPEI, *Kerapoxy*
 - C. MAPEI, *Kerapoxy IEG*
2. **Latex-Portland Cement Options:**
 - A. MAPEI, *Kerabond/Keralastic*[™] System
 - B. MAPEI, *Granirapid*[®] System
3. **Type 1 Adhesive**
 - A. MAPEI, *Type 1*[™] mastic

Some installation methods and component materials are not referenced.
MAPEI encourages the user to consult all approved resources to ensure a complete assembly.