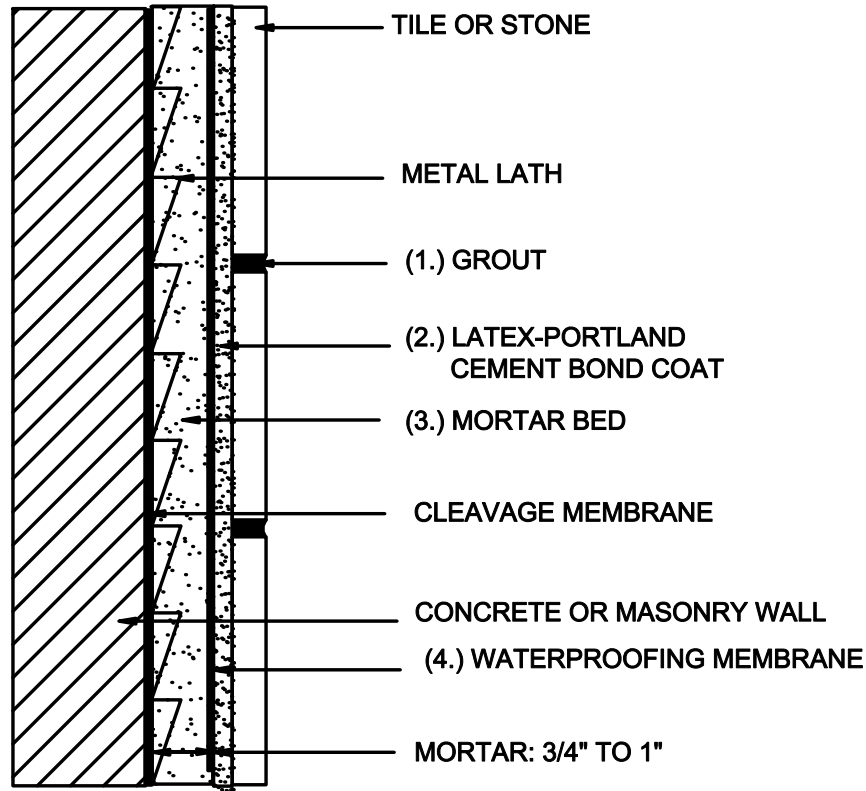


**MW 201**  
**Walls, Exterior and Interior**  
**Masonry, Cement Mortar**  
**Scale: N.T.S.**



**MAPEI PRODUCT ASSEMBLY**

- 1. Grout Options:**
  - A. MAPEI, *Opticolor*<sup>™</sup>
  - B. MAPEI, *Ultracolor Plus*<sup>®</sup>
  - C. MAPEI, *Keracolor*<sup>™</sup> S or *Keracolor U*
- 2. Latex-Portland Cement Options:**
  - A. MAPEI, *Kerabond/Keralastic*<sup>™</sup> System
  - B. MAPEI, *Granirapid*<sup>®</sup> System
  - C. MAPEI, *Ultraflex LFT*
- 3. Mortar Bed:**
  - A. MAPEI, *Planicrete*<sup>®</sup> AC blended with 3:1 site mix
- 4. Waterproofing Membrane**
  - A. MAPEI, *Mapelastic AquaDefense*

Some installation methods and component materials are not referenced.  
MAPEI encourages the user to consult all approved resources to ensure a complete assembly.