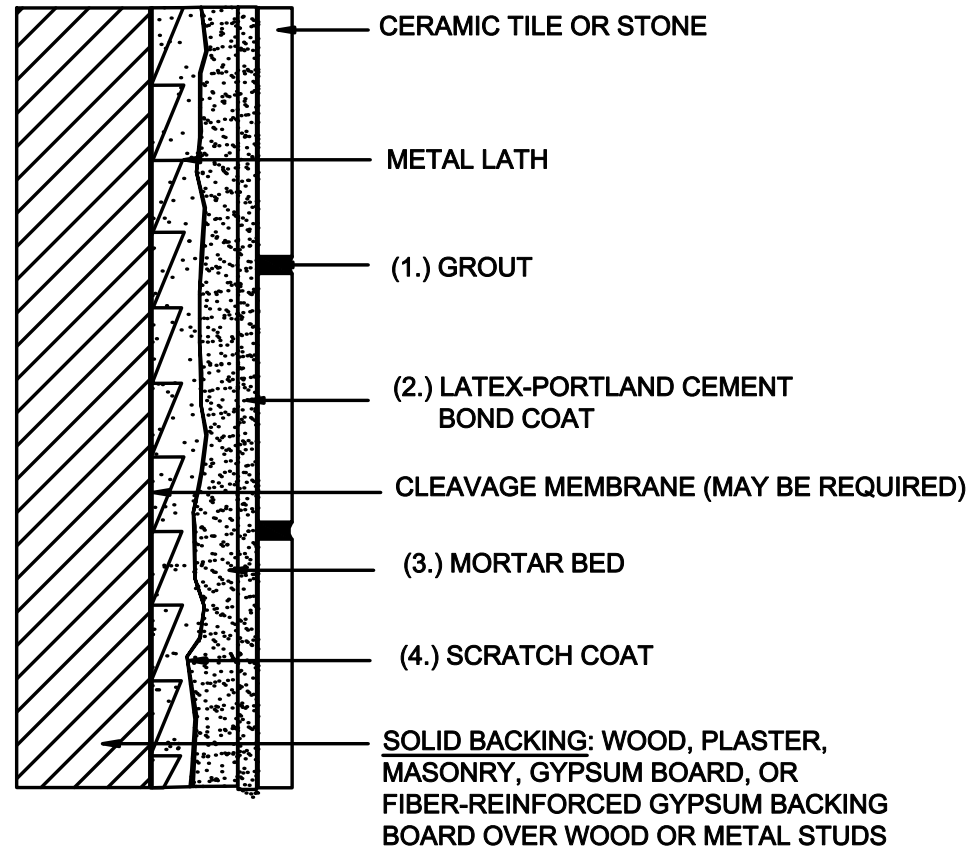


MW 221
Walls, Interior
Solid Backing, Cement
Mortar
Scale: N.T.S.



MAPEI PRODUCT ASSEMBLY

1. **Grout Options:**
 - A. MAPEI, *Opticolor*[™]
 - B. MAPEI, *Ultracolor Plus*[®]
 - C. MAPEI, *Keracolor*[™] S or *Keracolor U*
2. **Latex-Portland Cement Options:**
 - A. MAPEI, *Kerabond/Keralastic*[™] System
 - B. MAPEI, *Gramirapid*[®] System
 - C. MAPEI, *Ultraflex LFT*
3. **Mortar Bed**
 - A. MAPEI, *Planicrete*[®] AC blended with 3:1 site mix
4. **Scratch Coat**
 - A. MAPEI, *Planicrete AC* blended with site mix
(See ANSI A108.1A)

Some installation methods and component materials are not referenced.
MAPEI encourages the user to consult all approved resources to ensure a complete assembly.