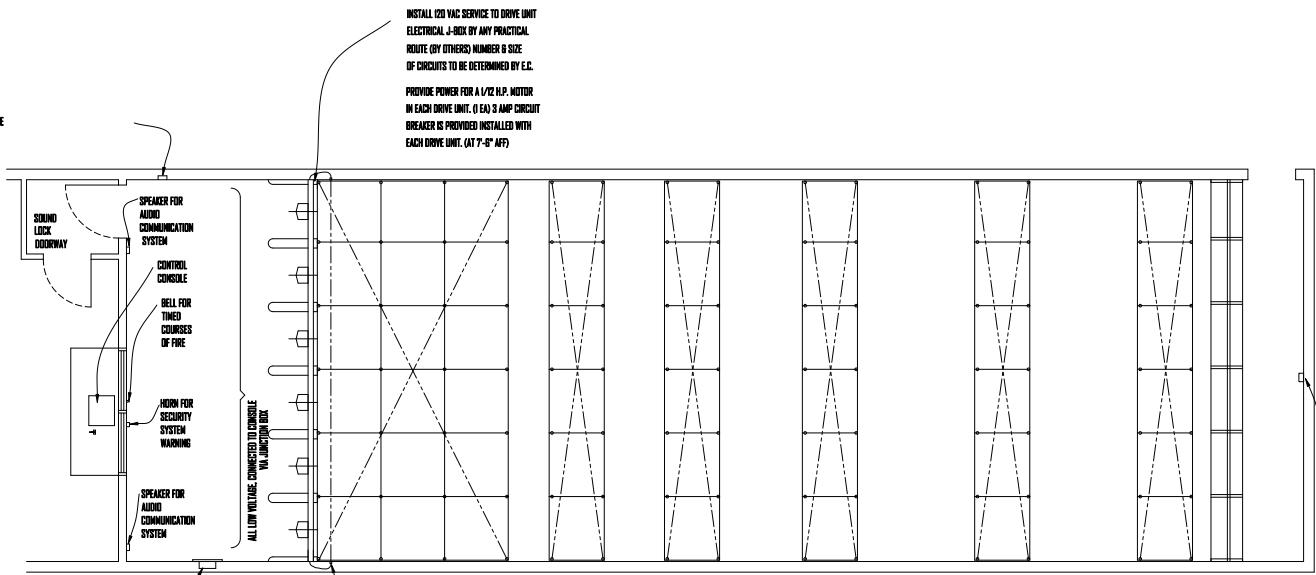


PROVIDE DUPLEX OUTLET SOMEWHERE ON FIRING LINE AREA FOR VACUUM CLEANER AND MAINTENANCE USE.



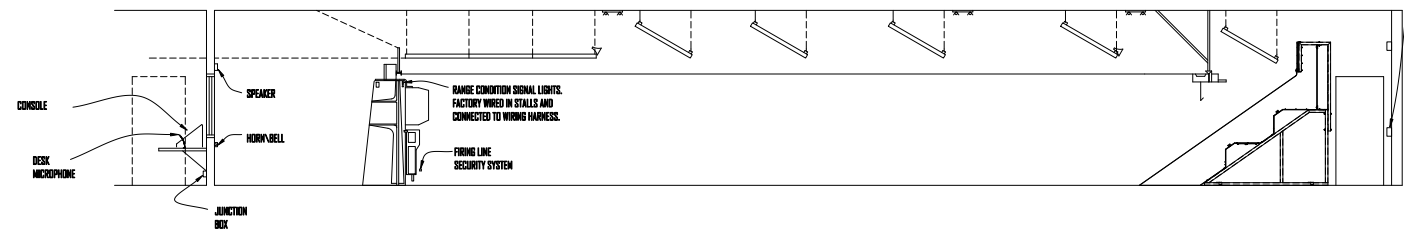
INSTALL 120 VAC SERVICE TO DRIVE UNIT ELECTRICAL J-BOX BY ANY PRACTICAL ROUTE (BY OTHERS) NUMBER & SIZE OF CIRCUITS TO BE DETERMINED BY E.C.

PROVIDE POWER FOR A 1/2 H.P. MOTOR IN EACH DRIVE UNIT. (1 EA) 3 AMP CIRCUIT BREAKER IS PROVIDED INSTALLED WITH EACH DRIVE UNIT. (AT 7'-8\"/>

RANGES WITHOUT CONTROL CONSOLES MAY HAVE SUBSYSTEM CONTROLS WALL MOUNTED IN CONVENIENT LOCATION BEHIND FIRING LINE, EITHER SURFACE MOUNTED OR FLUSH MOUNTED. SEPARATE JUNCTION BOX STILL REQUIRED.

FIRING LINE SECURITY SYSTEM, SURFACE MOUNT ON WALL, RUN 1/2\"/>

230 VAC, 30 AMP, SINGLE PHASE OR
230 VAC, 20 AMP, 3 PHASE
ELECTRICAL SERVICE BY OTHERS
REQUIRES 200 MINIMUM
CLEAN VOLTAGE, APPROXIMATELY
AS SHOWN, FOR CASWELL TRAPPAC.
REQUIRES HUBBELL RECEPTACLE
#2820A (SINGLE PHASE)
#2770A (3 PHASE).



CASWELL

INTERNATIONAL CORPORATION

CASWELL DETROIT ARMOR COMPANIES
2540 - 2ND STREET NE, MINNEAPOLIS, MN 55418-3412
TELEPHONE: 612-378-2000 FAX: 612-378-2087
720 INDUSTRIAL DRIVE, BUILDING #122, CARY, N. CAROLINA
TELEPHONE: 919-438-7800 FAX: 919-438-7804

TYPICAL COMMERCIAL RANGE ELECTRICAL DETAILS			
REV	DATE	BY	CHK
016	07/05/00		13-4352
			REV. A