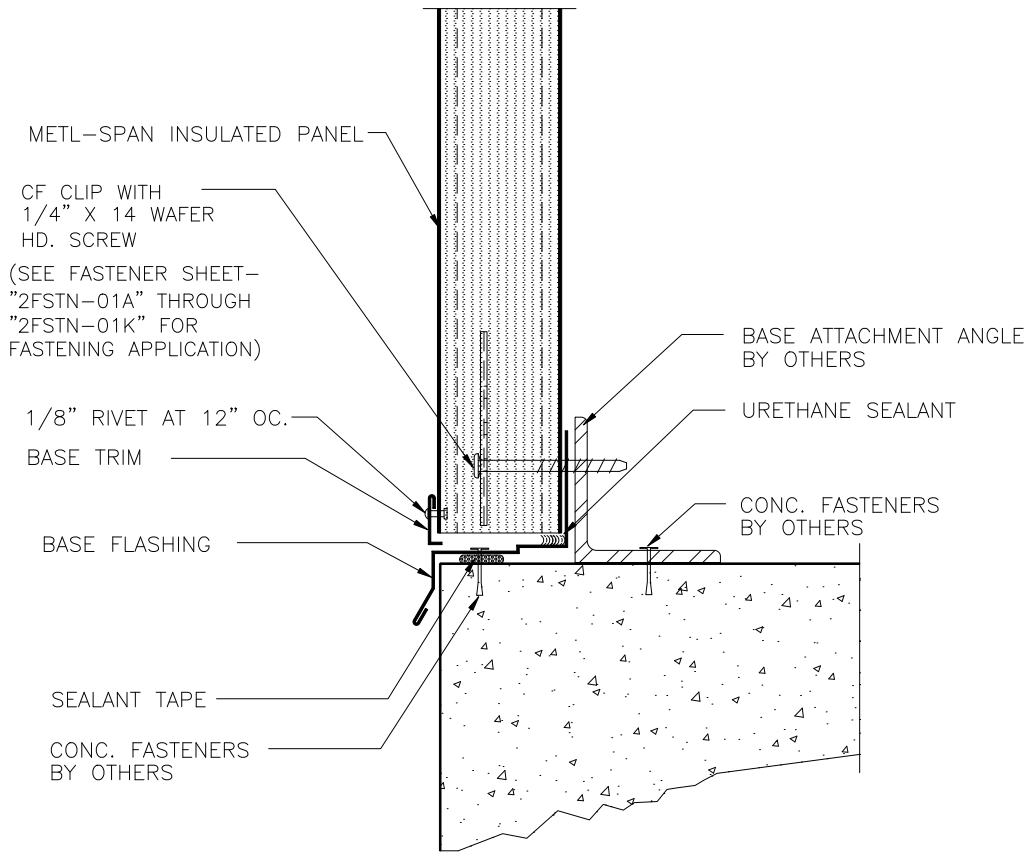


QMS
PEN SETTINGS

- 1 THRU 3 = .008
- 4 = .018
- 5 = .010
- 6 = .002
- 7 = .013
- 8 = .010
- 30 = .04

USE LIMITS TO PRINT @ 1=1 ON RICOH
USE VIEW V-1 TO PRINT @ 1=1 ON QMS



REFER TO SHEET "CI-INFO" FOR ADDITIONAL INFORMATION, REGARDING THE APPLICATION OF SEALANTS, FASTENERS, AND CLOSURE MATERIALS.

CONSULT METL-SPAN TO DETERMINE ALLOWABLE LOAD AND SPACING OF ATTACHMENT FASTENERS

<p>C&I BASE DETAIL</p>	<p>APPLICATION: COMMERCIAL & INDUSTRIAL</p>	<p>2-BE-03</p>
-----------------------------------	--	-----------------------