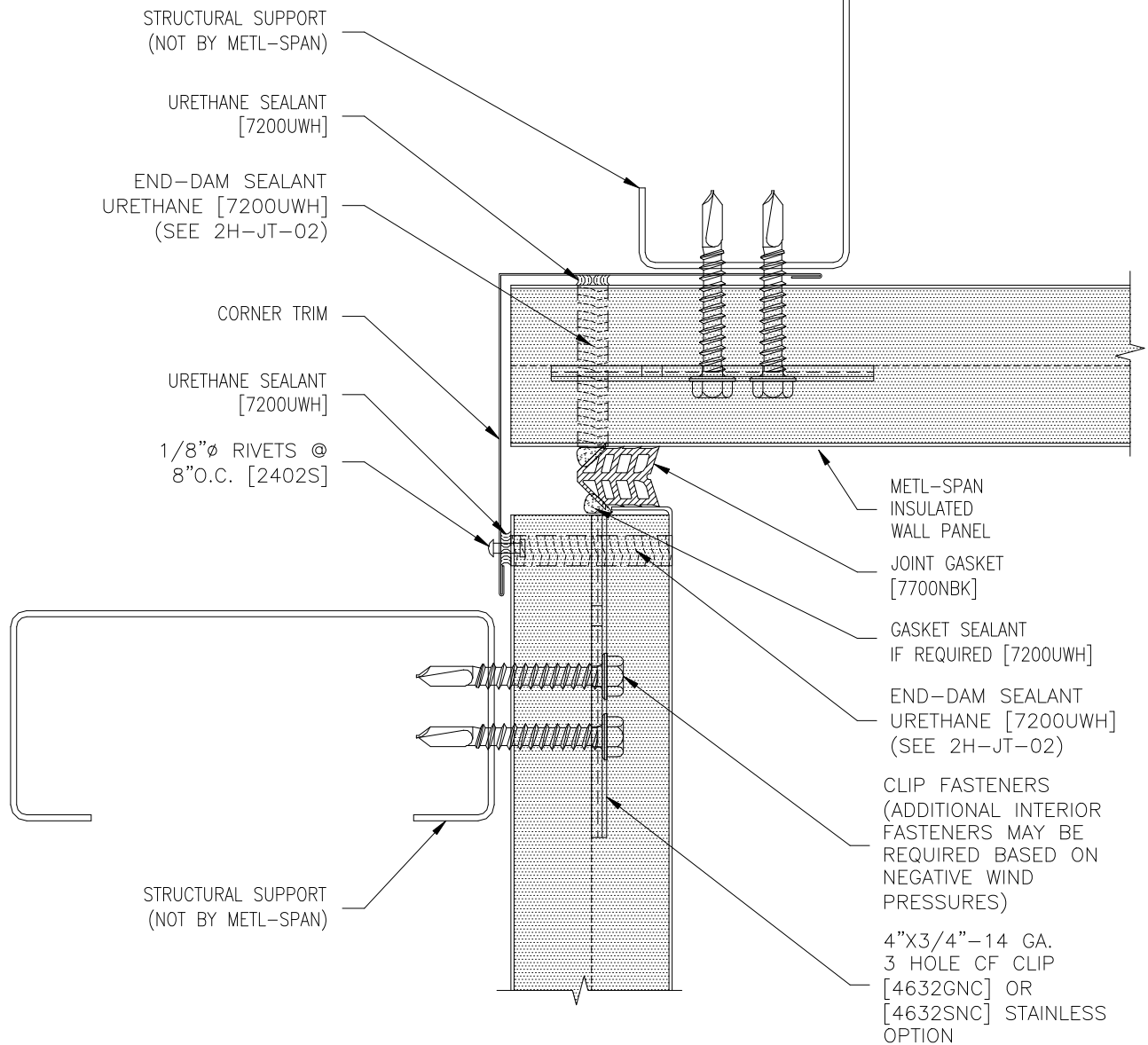


(SEE FASTENER SHEET- "2FSTN-01A" THROUGH "2FSTN-01D" FOR FASTENING APPLICATION)



REFER TO SHEET "CI-INFO" FOR ADDITIONAL INFORMATION REGARDING THE APPLICATION OF SEALANTS, FASTENERS, AND CLOSURE MATERIALS. CONSULT METL-SPAN TO DETERMINE ALLOWABLE LOAD AND SPACING OF ATTACHMENT FASTENERS.

**C&I HORIZONTAL
DETAIL**

**APPLICATION:
COMMERCIAL & INDUSTRIAL**

2H-CE-04

DATE: DECEMBER 19, 2008