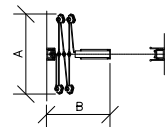


CRITERION FOLDING DOORS

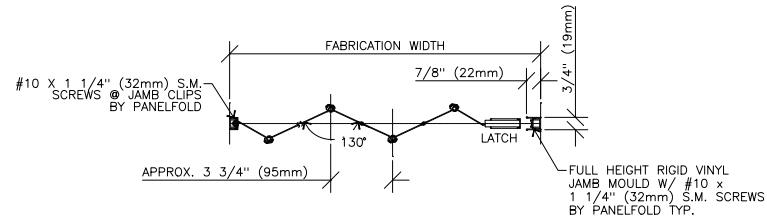
SINGLE FIXED-JAMB DOOR



NOTE:
 A. 5" (127mm) APPROX. STACK WIDTH
 B. APPROX. STACK DEPTH = 3/4"/ft. (62mm/m)
 PLUS 2 3/4" (70mm)

STACK

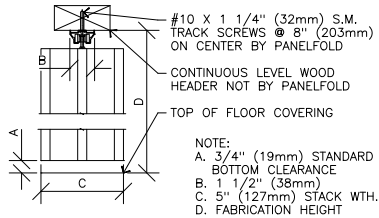
SINGLE FIXED-JAMB DOOR



PLAN

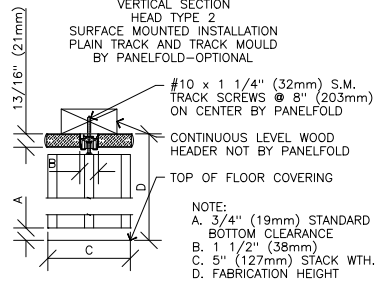
VERTICAL SECTION-HEAD DETAILS

VERTICAL SECTION HEAD TYPE 1 SURFACE MOUNTED INSTALLATION DECORATIVE TRACK BY PANELFOLD-STANDARD



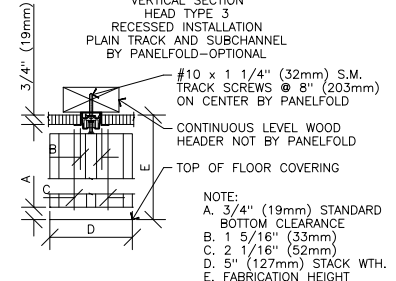
NOTE:
 A. 3/4" (19mm) STANDARD
 BOTTOM CLEARANCE
 B. 1 1/2" (38mm)
 C. 5" (127mm) STACK WTH.
 D. FABRICATION HEIGHT

VERTICAL SECTION HEAD TYPE 2 SURFACE MOUNTED INSTALLATION PLAIN TRACK AND TRACK MOULD BY PANELFOLD-OPTIONAL



NOTE:
 A. 3/4" (19mm) STANDARD
 BOTTOM CLEARANCE
 B. 1 1/2" (38mm)
 C. 5" (127mm) STACK WTH.
 D. FABRICATION HEIGHT

VERTICAL SECTION HEAD TYPE 3 RECESSED INSTALLATION PLAIN TRACK AND SUBCHANNEL BY PANELFOLD-OPTIONAL



NOTE:
 A. 3/4" (19mm) STANDARD
 BOTTOM CLEARANCE
 B. 1 5/16" (33mm)
 C. 2 1/16" (52mm)
 D. 5" (127mm) STACK WTH.
 E. FABRICATION HEIGHT