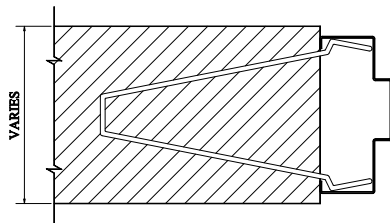


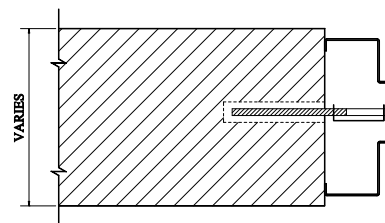
WIRE MASONRY

A



WIRE MASONRY

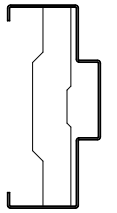
B



PREPARED  
MASONRY  
(WELDED-ON)

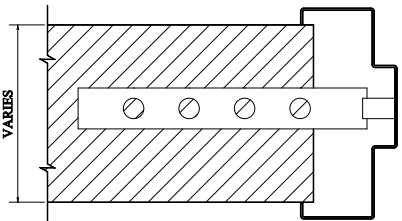
C

3/8" 20 FHMS AND  
3/8" EXPANSION SHIELD



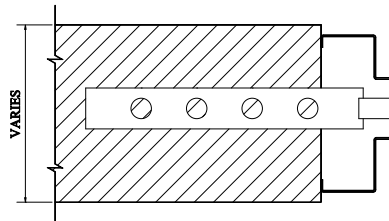
SNAP-IN PO  
ANCHOR  
(REQUIRES 3/4"Ø  
HOLE IN SOFFIT)

D



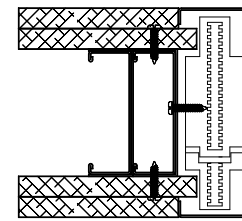
(WELDED-ON)

E



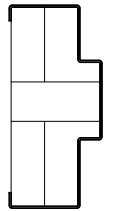
(WELDED-ON)

F



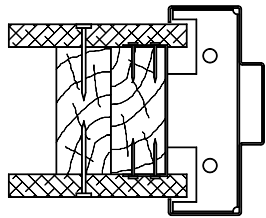
CLOSED  
CHANNEL STEEL  
STUD

G



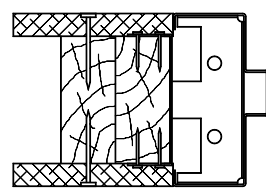
TWIST-IN PO  
ANCHOR

H



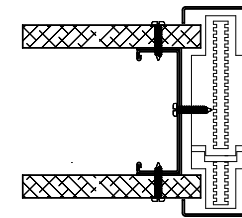
WOOD STUD

J



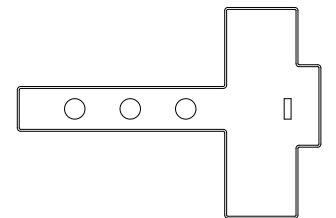
WOOD STUD

K



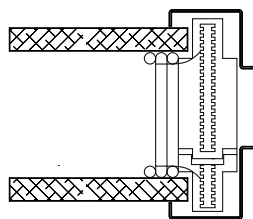
CLOSED  
CHANNEL STEEL  
STUD

L



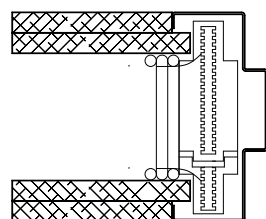
TEE MASONRY  
ANCHOR

M



WIRE STUD

N



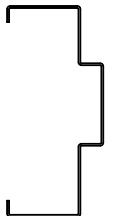
WIRED STUD

O



ADJUSTABLE  
DRYWALL PRESSURE  
ANCHOR  
(WELDED-ON)

P



NOTE: ALL ANCHORS  
SHIPPED LOOSE  
EXCEPT AS NOTED

Q