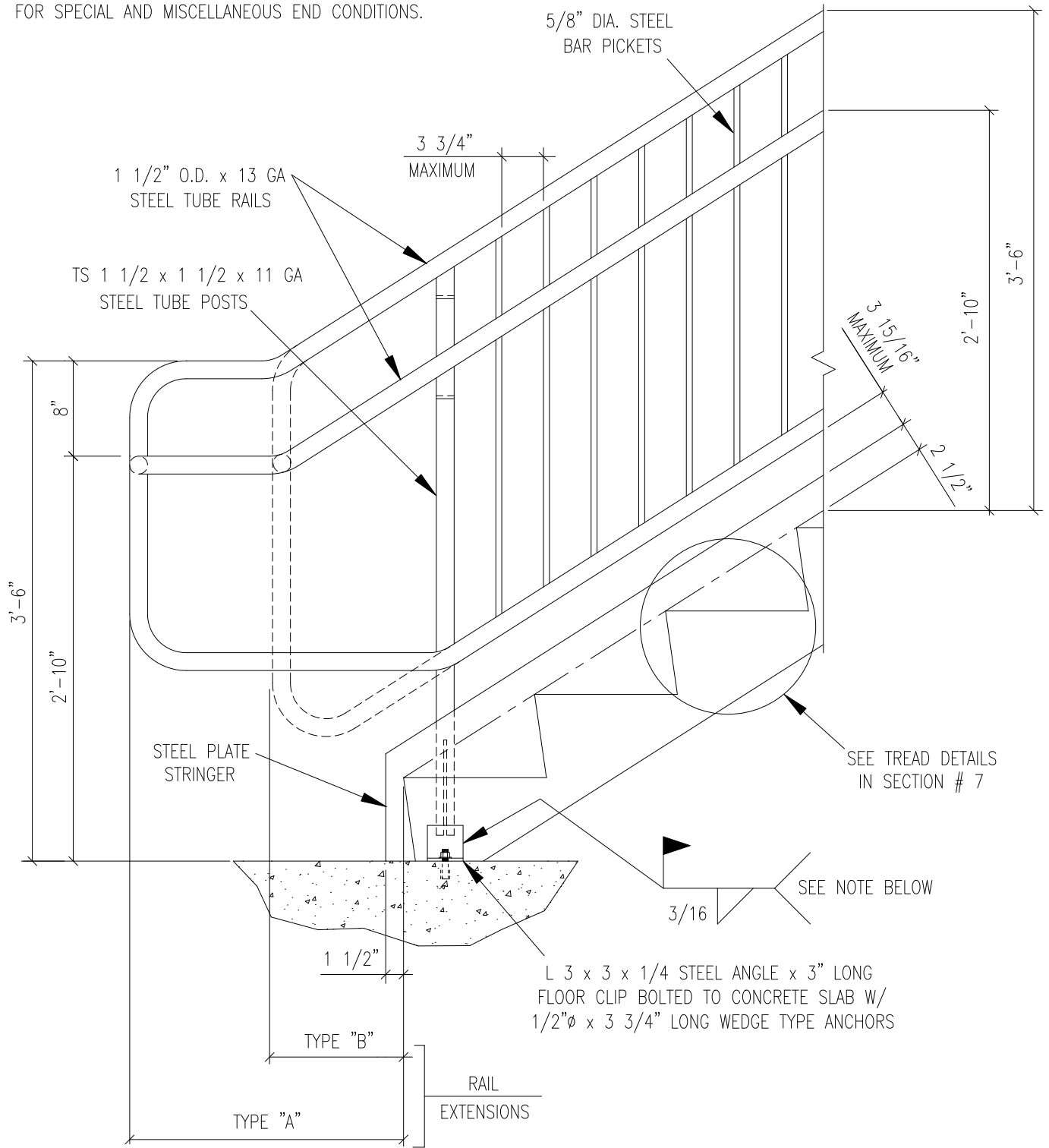


ADDITIONAL INFORMATION AVAILABLE IN SECTION # 14
FOR SPECIAL AND MISCELLANEOUS END CONDITIONS.



RAIL EXTENSIONS MAY VARY PER LOCAL CODE
TYPE "A" = 1'-11" OR 1 TREAD + 12"
TYPE "B" = 11" OR 12"

NOTE SHOP WELDED FOR CONCRETE FILL AND PRECAST TREADS.
SHIPPED LOOSE & FIELD WELDED FOR TUFF-COAT,
TUFF-TREAD, & CHECKERED PLATE TREADS.

FOR FURTHER DETAIL PLEASE VISIT WWW.SHARONSTAIR.COM



PICKET RAIL STARTER RAIL

RAIL TERMINATION AT BOTTOM OF STAIR

5TH EDITION

SCALE: 1"=1'-0"

11-13