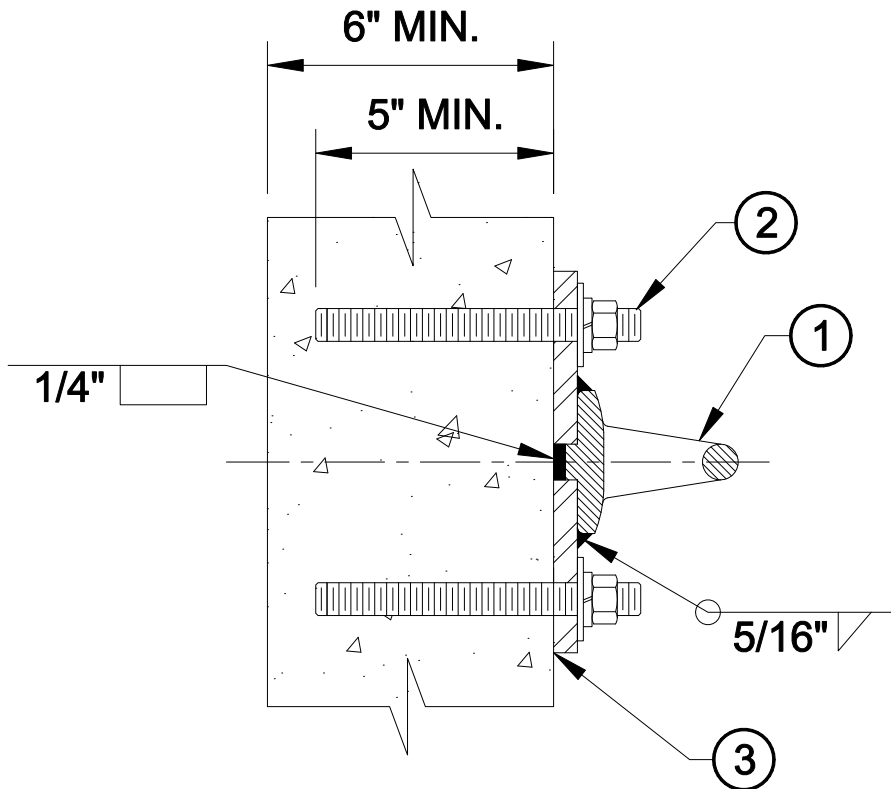
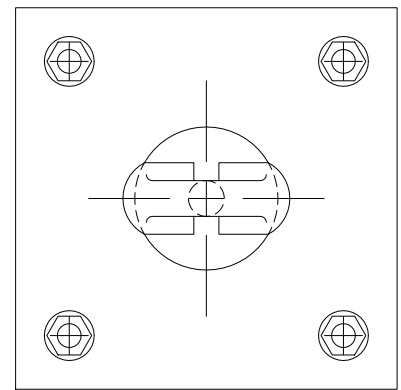


Heavy Duty Wall Anchor Mounted with Chemical Anchor Fasteners

Summit Models: SM-81-8-8, SM-TRA-ADH-7



SECTION VIEW



FRONT VIEW

SM-81-8-8

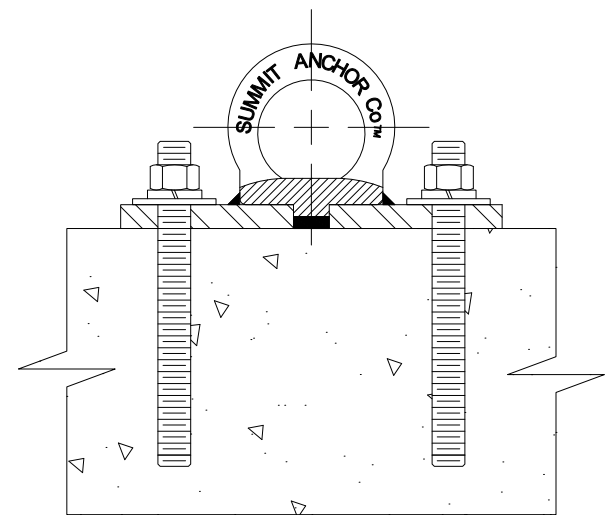
- ① FORGED PAD EYE, QUENCHED AND TEMPERED, (ALSO AVAILABLE IN 304 STAINLESS STEEL, ANNEALED) WELDED TO 8" X 8" X 1/2" STEEL PLATE HOT-DIPPED GALVANIZED AFTER FABRICATION.

(4) SM-TRA-ADH-7

- ② GALVANIZED FLAT WASHERS, STAINLESS STEEL LOCK WASHERS, AND 5/8"Ø X 7" HILTI HVA ANCHORS WITH 304 B8 STAINLESS STEEL THREADED RODS AND HEAVY HEX NUTS. (THREADS DEFORMED AFTER INSTALLATION).

CAULK

- ③ CONTINUOUS CAULKING ALL AROUND.



PLAN VIEW