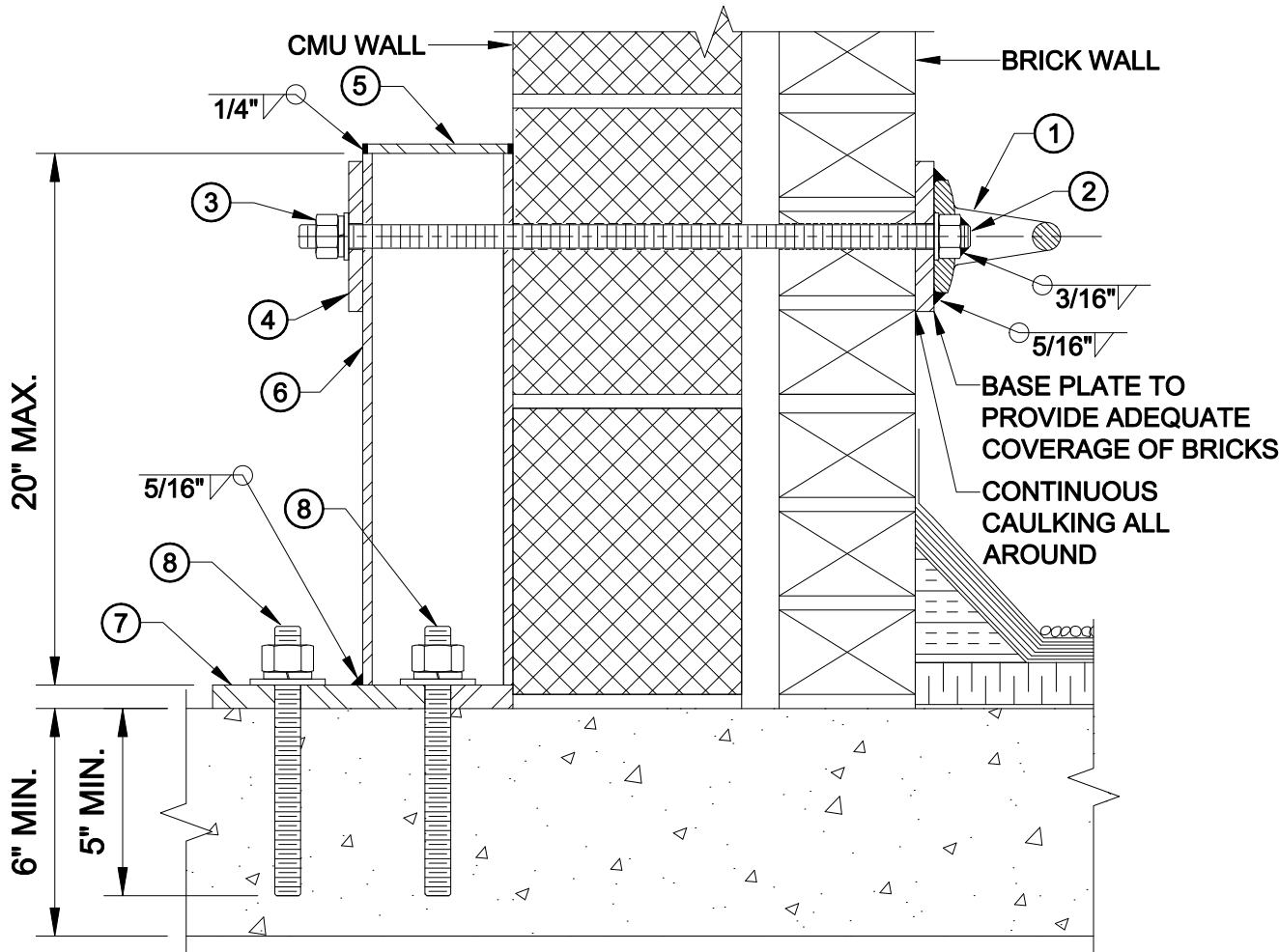


Curb Anchor for Masonry Wall and Concrete Slab

Summit Models: SM-81-PLT-E, SM-TRA-ADH-7, SM-TRA, SM-81-4-8, SM-PLT-48-58-G



SM-81-4-8

① FORGED PAD EYE, QUENCHED AND TEMPERED (ALSO AVAILABLE IN 304 STAINLESS STEEL, ANNEALED), WELDED TO 8" X 4" X 1/2" PLATE. ENTIRE ANCHOR HOT-DIPPED GALVANIZED AFTER FABRICATION.

(2) SM-TRA

② 5/8"Ø 304 B8 SS THREADED RODS WELDED TO 304 B8 SS HEAVY HEX NUTS, AND GALVANIZED FLAT WASHERS.

③ 5/8" GALVANIZED FLAT WASHERS, SS LOCK WASHERS, AND 304 B8 SS HEAVY HEX NUTS.

SM-PLT-48-58-G

④ 8" X 4" X 1/2" BACK PLATE.

SM-81-PLT-E

⑤ 3-3/4" X 3-3/4" X 1/4" CAP.

⑥ 4" X 4" X 1/4" HSS.

⑦ 8" X 8" X 5/8" STAINLESS STEEL BASE PLATE.

(4) SM-TRA-ADH-7

⑧ GALVANIZED FLAT WASHERS AND 5/8"Ø HILTI HVA ADHESIVE ANCHOR SYSTEMS, USING 304 B8 SS HEAVY HEX NUTS, THREADED RODS, AND SS LOCK WASHERS. (THREADS DEFORMED AFTER INSTALLATION).