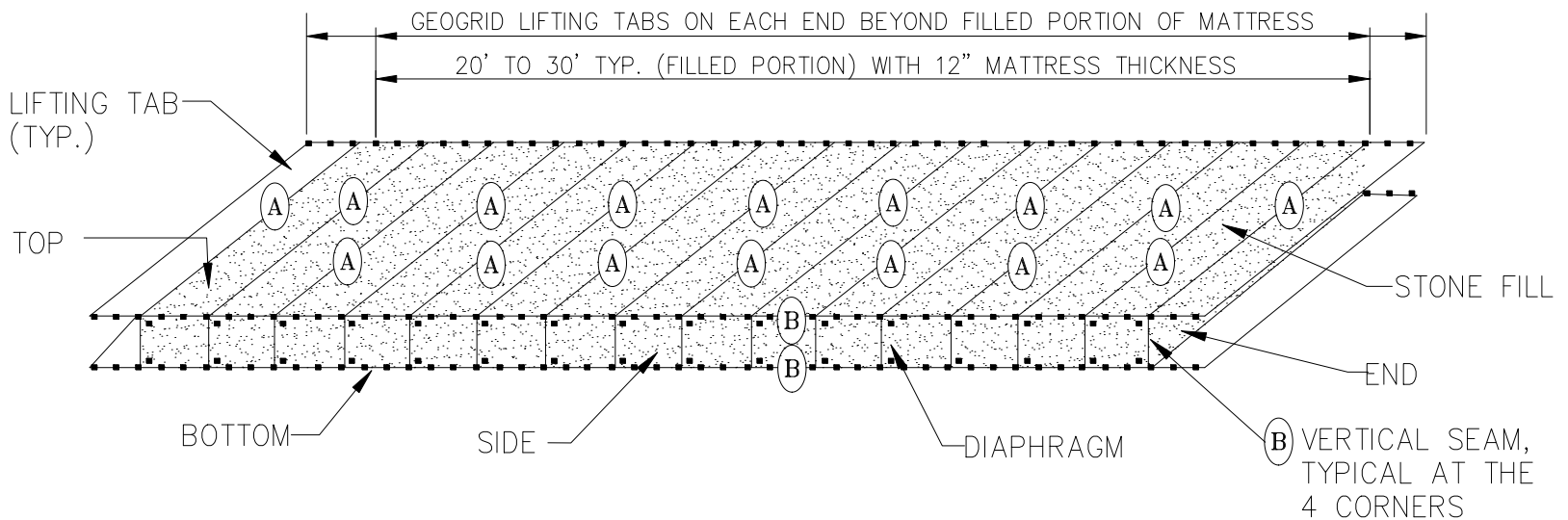


## TYPICAL CONFIGURATION OF FILLED MATTRESS UNITS



(A) INDICATES BODKIN CONNECTION USING 3/8" DIAMETER HDPE BODKIN ROD

(B) INDICATES BRAIDED SEAM USING 3/16" DIAMETER HIGH UV HDPE BRAID

### NOTES:

ENDS, TOP, BOTTOM, SIDES AND ANY EXTRA LENGTH USED FOR LIFTING OR ANCHORING PURPOSES SHALL BE COMPOSED OF TENSAR UXTRITON2 GEOGRID.

INTERNAL DIAPHRAGMS SHALL BE COMPOSED OF TENSAR UXTRITON1 GEOGRID.

NOMINAL WIDTH OF UNITS: 5FT (FILLED), 4.3 FT (UNFILLED).

TYPICAL THICKNESS (FILLED): 12 INCHES; OPTIONAL THICKNESS: 18 INCHES OR 24 INCHES.

PLASTIC CABLES TIES MAY BE USED TO SECURE BODKIN CONNECTORS IN POSITION PRIOR TO TENSIONING OR FILLING OF MATTRESS UNITS.