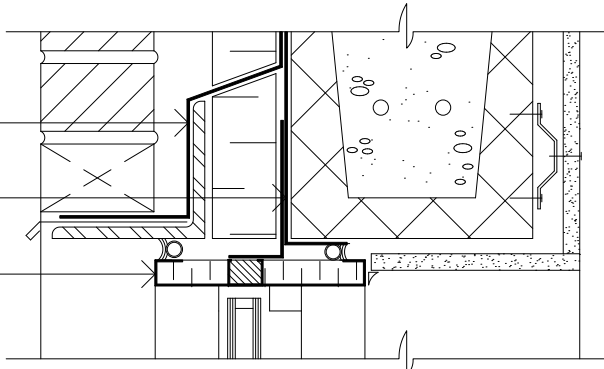
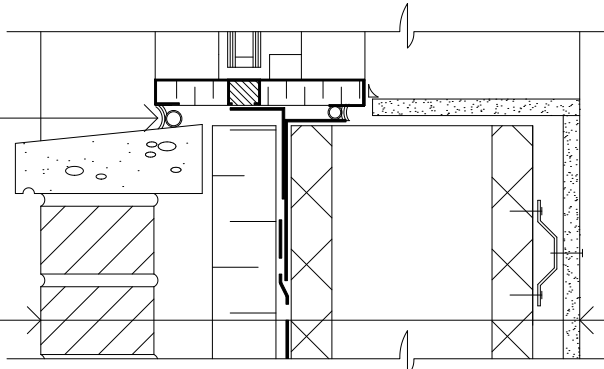


ExoAir TWF
 Tremco Approved Transition Sheet
 Factory Insulated Window Frame



Head

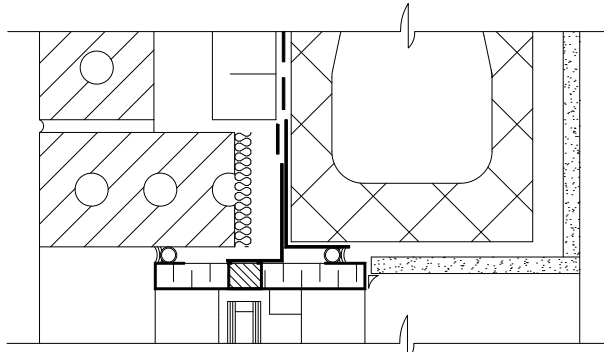
Sealant and Backer-Rod
 Brick Veneer
 Air Space
 Insulation
 ExoAir 120 or 220
 Concrete Masonry Unit
 Furring
 Gypsum Board



Sill

Notes

1. A continuous plane of air tightness is achieved when the window frame thermal break and air/vapour barrier are well integrated. There are several possibilities for window attachment.



Jamb

TREMCO		3735 Green Road Beachwood, Ohio 44122 216-292-5000	
Project: Window Detail			
Drawn by: R. DiFelice	Scale: Not To Scale	Date: 05-09-07	Drawing/Index No.