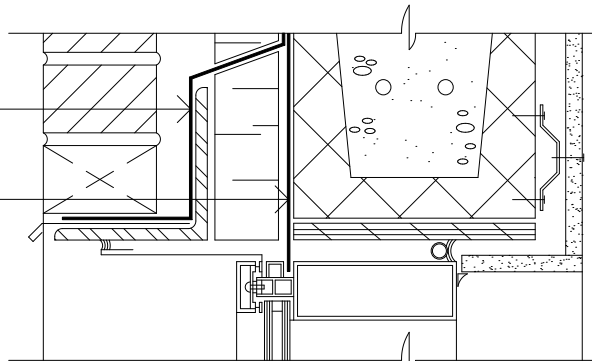


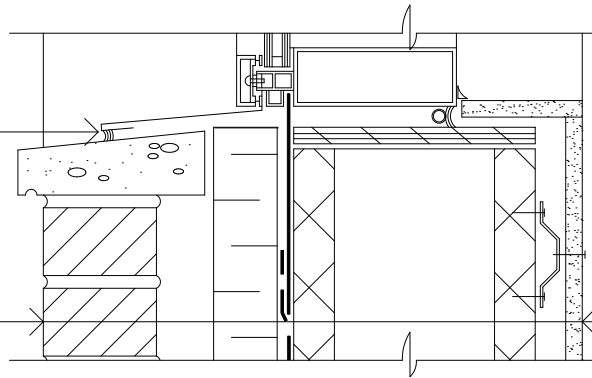
ExoAir TWF  
Tremco Approved  
Transition Sheet



**Head**

Tremco Approved Sealant

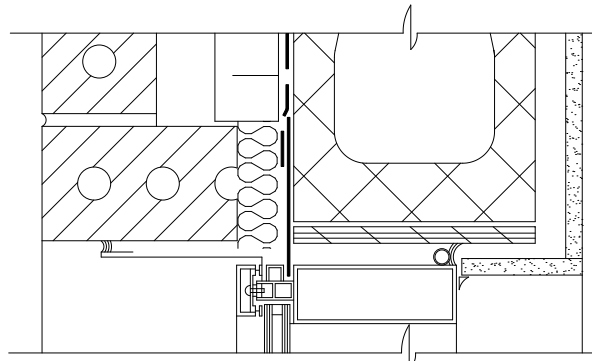
Brick Veneer  
Air Space  
Insulation  
ExoAir 120 or 220  
Concrete Masonry Unit  
Furring  
Gypsum Board



**Sill**

**Notes**

1. A continuous plane of air tightness is achieved when the window frame thermal break and air/vapour barrier are well integrated.
2. Extend TWF into window frame and clamp tight.



**Jamb**

<b>TREMCO</b>		3735 Green Road Beachwood, Ohio 44122 216-292-5000	
Project: <b>Window Detail B</b>			
Drawn by: R. DiFelice	Scale: Not To Scale	Date: 05-09-07	Drawing/Index No.