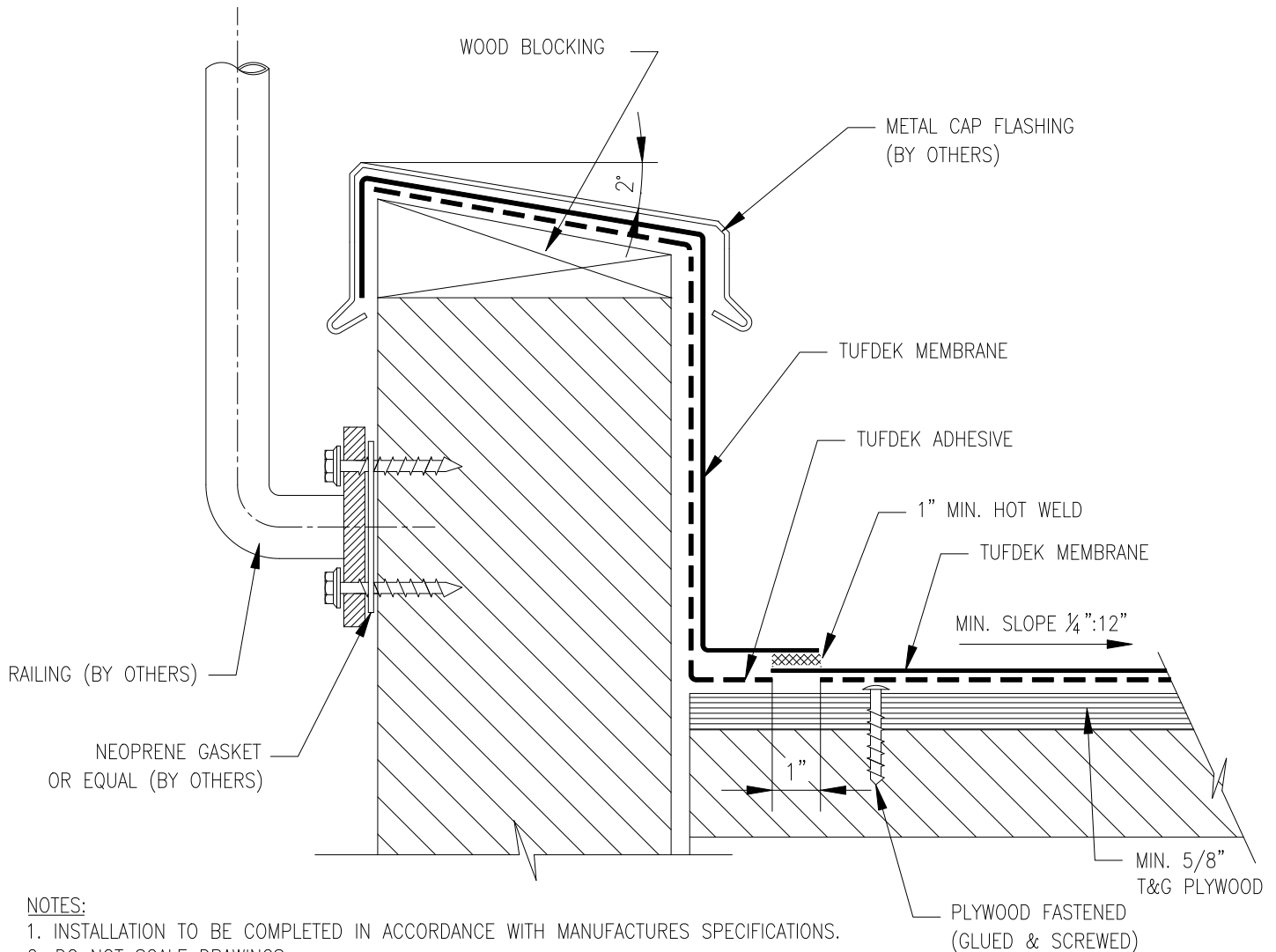


VINYL FLOORING FOR THE ELEMENTS

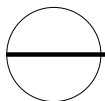


Tuff Industries
1939 Kirschner Rd., Kelowna, B.C.
Toll Free: 1-877-860-9333
Fax: (250) 860-9337
www.tufdek.com



NOTES:

1. INSTALLATION TO BE COMPLETED IN ACCORDANCE WITH MANUFACTURES SPECIFICATIONS.
2. DO NOT SCALE DRAWINGS.
3. MIN. SLOPE 1/4":12" AWAY FROM STRUCTURE.
4. TUFDECK MEMBRANE TO BE FULLY ADHERED ON ALL VERTICAL SURFACES WITH TUFF \pm ADHESIVE.
5. PLYWOOD SUBSTRATES TO BE MIN. 5/8" T&G (3/4" RECOMMENDED) PLYWOOD JOINTS TO BE BLOCKED FROM BELOW.
6. AS A SUPPLIER OF MATERIALS ONLY, TUFF INDUSTRIES DOES NOT ASSUME RESPONSIBILITY FOR ERRORS IN DESIGN, ENGINEERING, QUANTITIES OR DIMENSIONS. THE ARCHITECT, CONTRACTORS OR OWNERS REPRESENTATIVE MUST VERIFY ALL DIMENSIONS, SIZES AND SUITABILITY OF DETAILS.
7. METAL CAP FLASHING TO SLOPE MIN. 2% TO INSIDE. FLASHINGS TO HAVE STANDING SEAMS OR S-LOCKS WITH OUTSIDE FLANGES CLIPPED. REFER TO NRCA FOR STANDARD METAL FLASHING AND FASTENING DETAILS.
8. THIS DRAWING IS THE PROPERTY OF TUFF INDUSTRIES INC. AND MAY NOT BE REPRODUCED WITHOUT WRITTEN CONSENT. ANY DIMENSIONS SHOWN ARE APPROXIMATE AND ARE SUBJECT TO FIELD CONFIRMATION BY OTHERS.
9. CONTRACTORS NOTE: FOR PRODUCT INFORMATION VISIT: www.tufdek.com



TD-12-B

GUARDRAIL ATTACHMENT TO OUTSIDE OF UPSTAND WALL