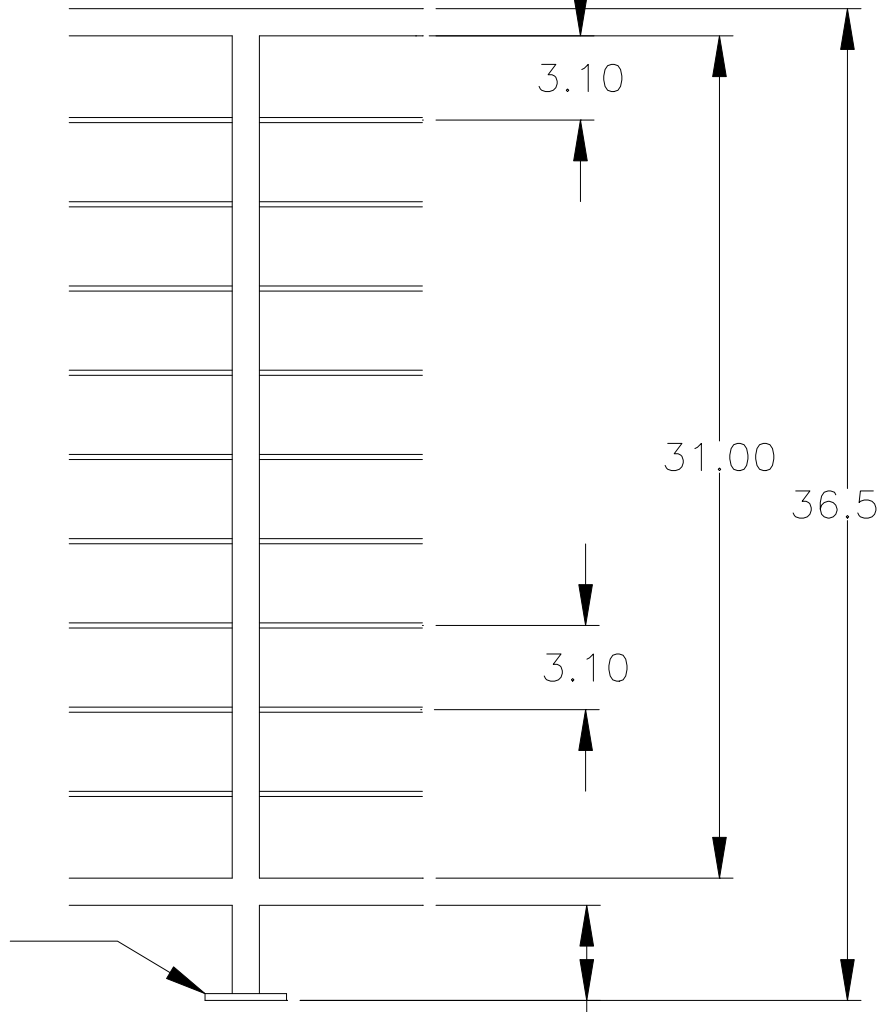
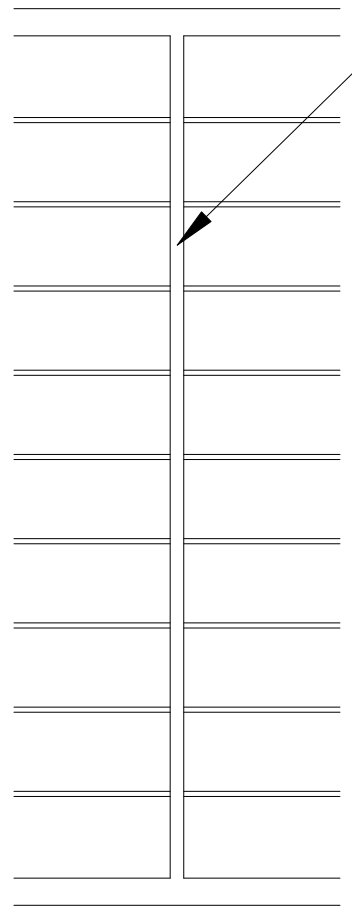
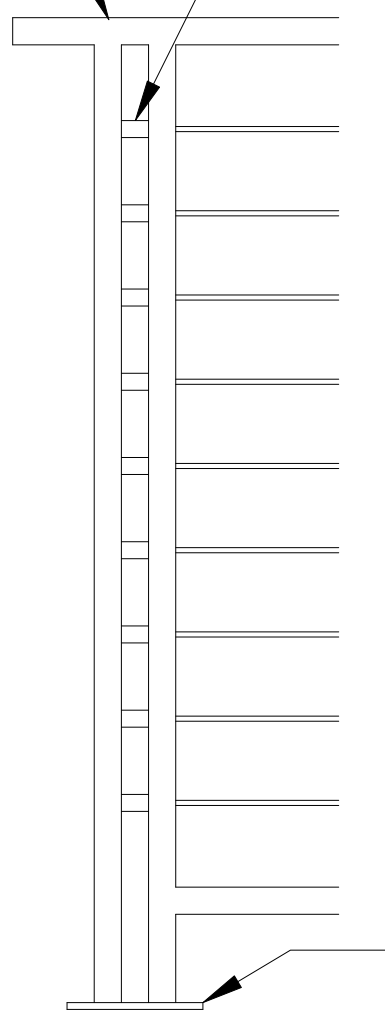


3" x 1" & 2" x 1" RECT. TUBE x 36-1/2" HIGH RAIL
WITH BOTTOM RAIL

SEE RAILING FRAME COMPONENTS
MATERIAL SPECIFICATIONS SECTION

STAINLESS STEEL SPACER

OPTIONAL .25" X 1" CABLE BRACE



SEE MOUNTING OPTIONS
SECTION FOR MOUNTING
METHODS

D1