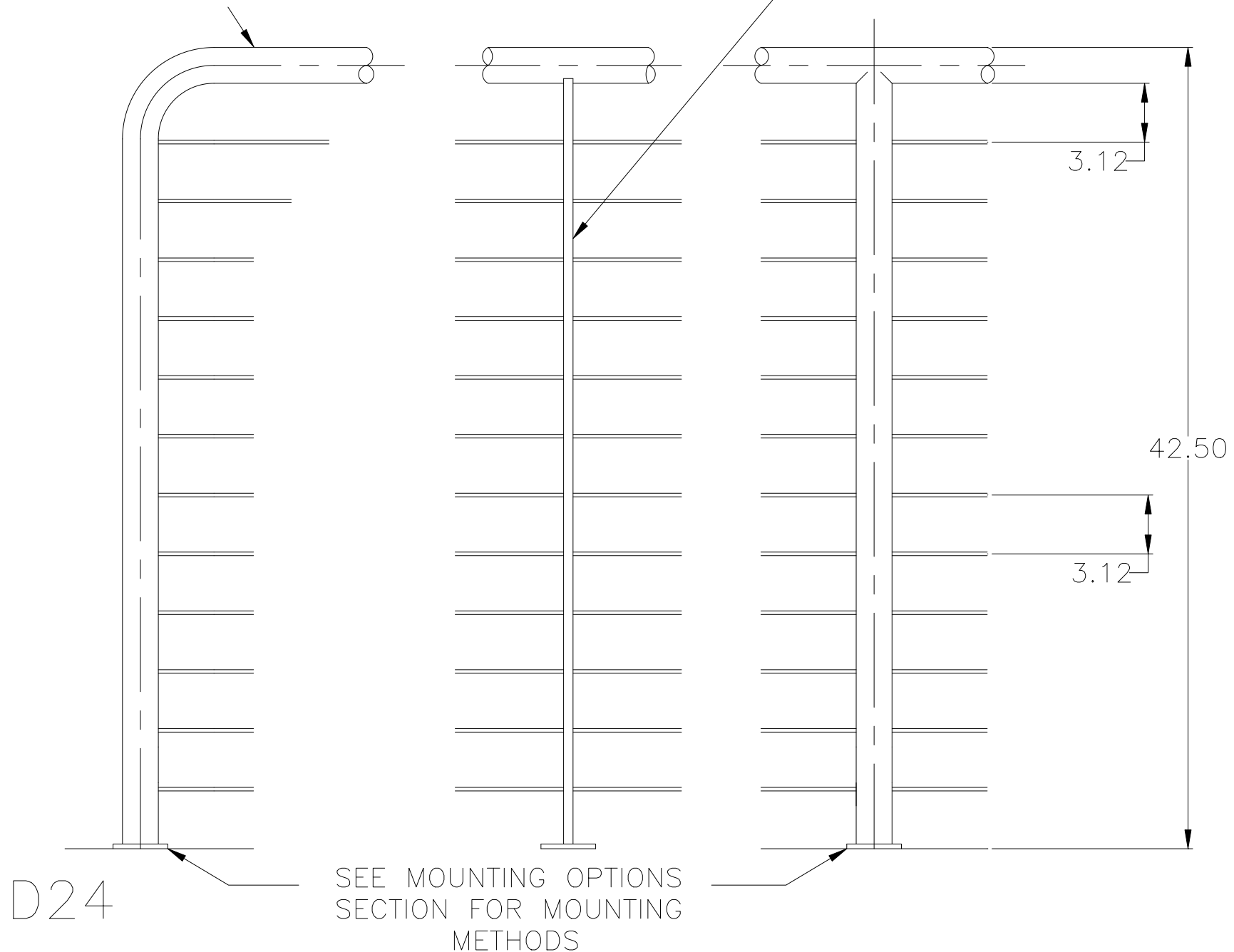


1 1/2" PIPE x 42-1/2" HIGH RAIL  
WITHOUT BOTTOM RAIL

SEE RAILING FRAME COMPONENTS  
MATERIAL SPECIFICATIONS SECTION

OPTIONAL .25" X 1" CABLE BRACE



D24

SEE MOUNTING OPTIONS  
SECTION FOR MOUNTING  
METHODS