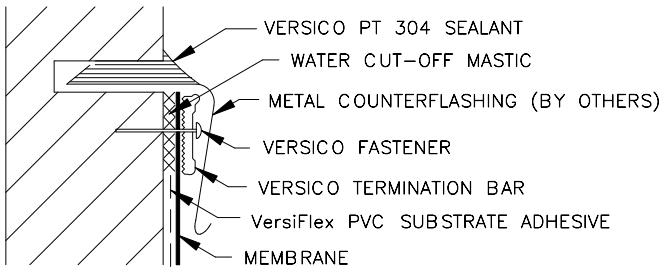


VersiFlex VFC-9C
COUNTERFLASHING TERMINATION

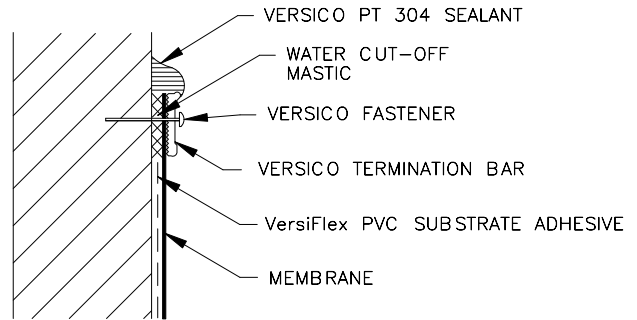
NOTES:

1. COUNTERFLASHING SHALL BE ELEVATED ABOVE PONDED WATER.
2. NOT FOR USE ON 15 OR 20 YEAR WARRANTY PROJECTS (REFER TO VersiFlex VFC-9F DETAIL).

FOR USE ON 15 YEAR WARRANTY PROJECTS.
TERMINATION BAR IS NOT REQUIRED ON 10 YEAR WARRANTY PROJECTS (REFER TO VersiFlex VFC-9C DETAIL)



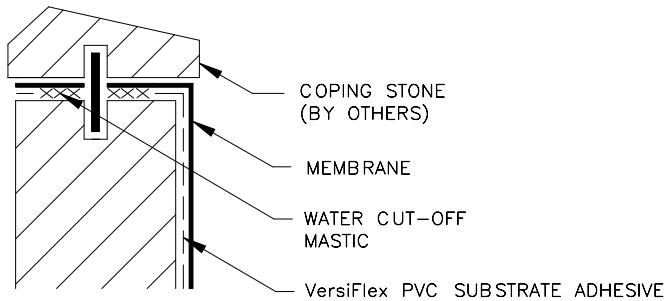
1. APPLY ON HARD SMOOTH SURFACE ONLY; NOT FOR USE ON WOOD.
2. DO NOT WRAP COMPRESSION TERMINATION AROUND CORNERS.



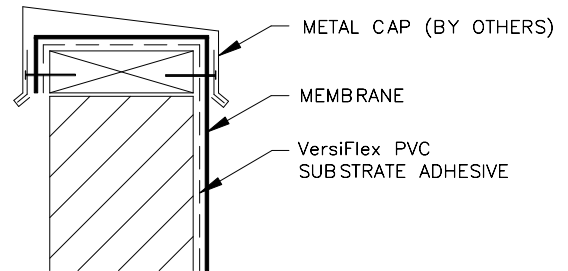
3. FASTENERS OF METAL BAR MUST PROVIDE CONSTANT COMPRESSION ON WATER CUT-OFF MASTIC.
4. ALLOW 1/4" to 1/2" (6 to 13 mm) SPACING BETWEEN CONSECUTIVE LENGTHS OF TERMINATION BAR.

VersiFlex VFC-9F
MECHANICAL TERMINATION

VersiFlex VFC-9D
MECHANICAL TERMINATION



VersiFlex VFC-9E
COPING STONE TERMINATION



VersiFlex VFC-9B
CAP FLASHING TERMINATION

VFC-9 FLASHING TERMINATIONS

VERSICO
INCORPORATED



A subsidiary of Carlisle SynTec Incorporated
© 2005 VERSICO INCORPORATED