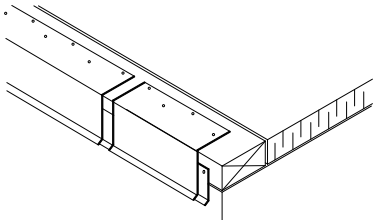
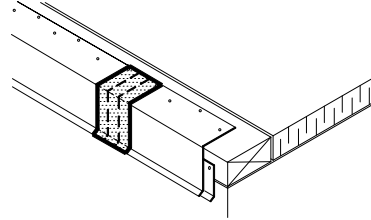


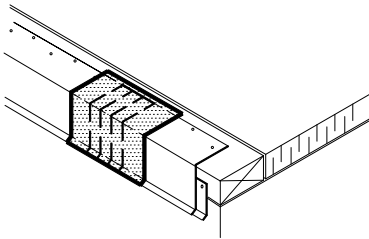
VersiWeld ® ROOFING SYSTEM



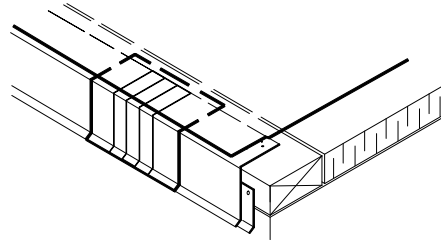
1. INSTALL VERSIWELD COATED METAL WITH 1/8" - 1/4" (3 - 6 mm) JOINTS BETWEEN ADJOINING SECTIONS.



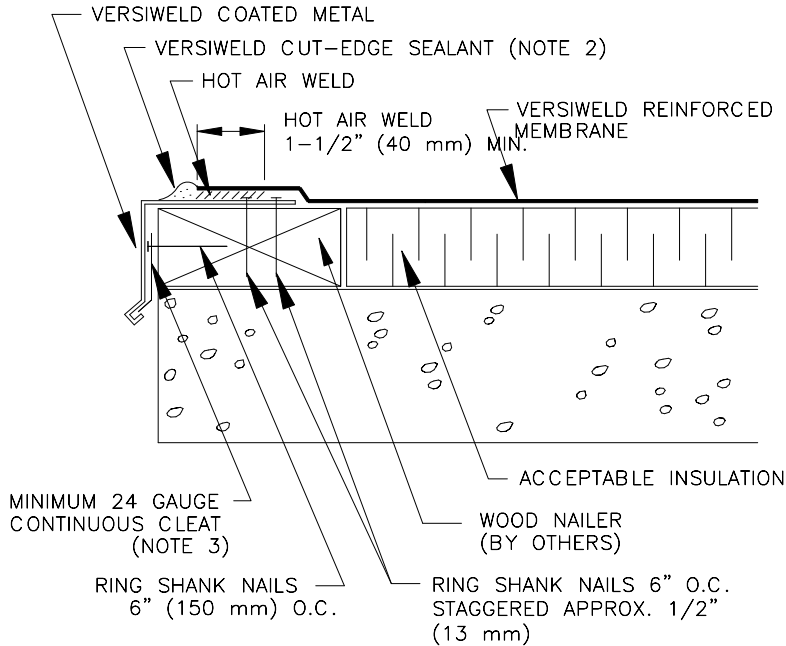
2. INSTALL 2" (50 mm) WIDE FOIL GRIP ALUMINUM TAPE OVER JOINTS IN VERSIWELD COATED METAL.



3. HEAT WELD 6" (150 mm) WIDE PIECE OF VERSIWELD NON-REINFORCED MEMBRANE OVER JOINT.



4. POSITION VERSIWELD REINFORCED MEMBRANE AND HEAT WELD TO VERSIWELD COATED METAL A MINIMUM OF 1-1/2" (40 mm) AS SHOWN BELOW.



NOTES:

1. FASTENERS USED TO ATTACH VERSIWELD COATED METAL MUST PENETRATE WOOD NAILERS A MINIMUM OF 1-1/4" (32 mm). IF 1/2" (13 mm) PLYWOOD IS USED AS THE TOP NAILER, FASTENERS MUST PENETRATE A MINIMUM OF 1-1/4" INTO NAILER BELOW.
2. APPROXIMATELY 1/8" (3 mm) DIAMETER BEAD OF CUT-EDGE SEALANT IS REQUIRED ON CUT EDGES OF VERSIWELD REINFORCED MEMBRANE.
3. GAUGE OF CONTINUOUS CLEAT IS DEPENDENT ON THE FASCIA HEIGHT AS SHOWN ON THE CHART BELOW.

MAX. FASCIA LENGTH	GAUGE OF CONT. CLEAT
4" (100 mm)	24 GAUGE (.59 mm)
6" (150 mm)	22 GAUGE (.75 mm)
8" (200 mm)	20 GAUGE (.91 mm)

VWC-1.2

COATED METAL DRIP EDGE

VERSICO
INCORPORATED



A subsidiary of Carlisle SynTec Incorporated
© 2006 VERSICO INCORPORATED