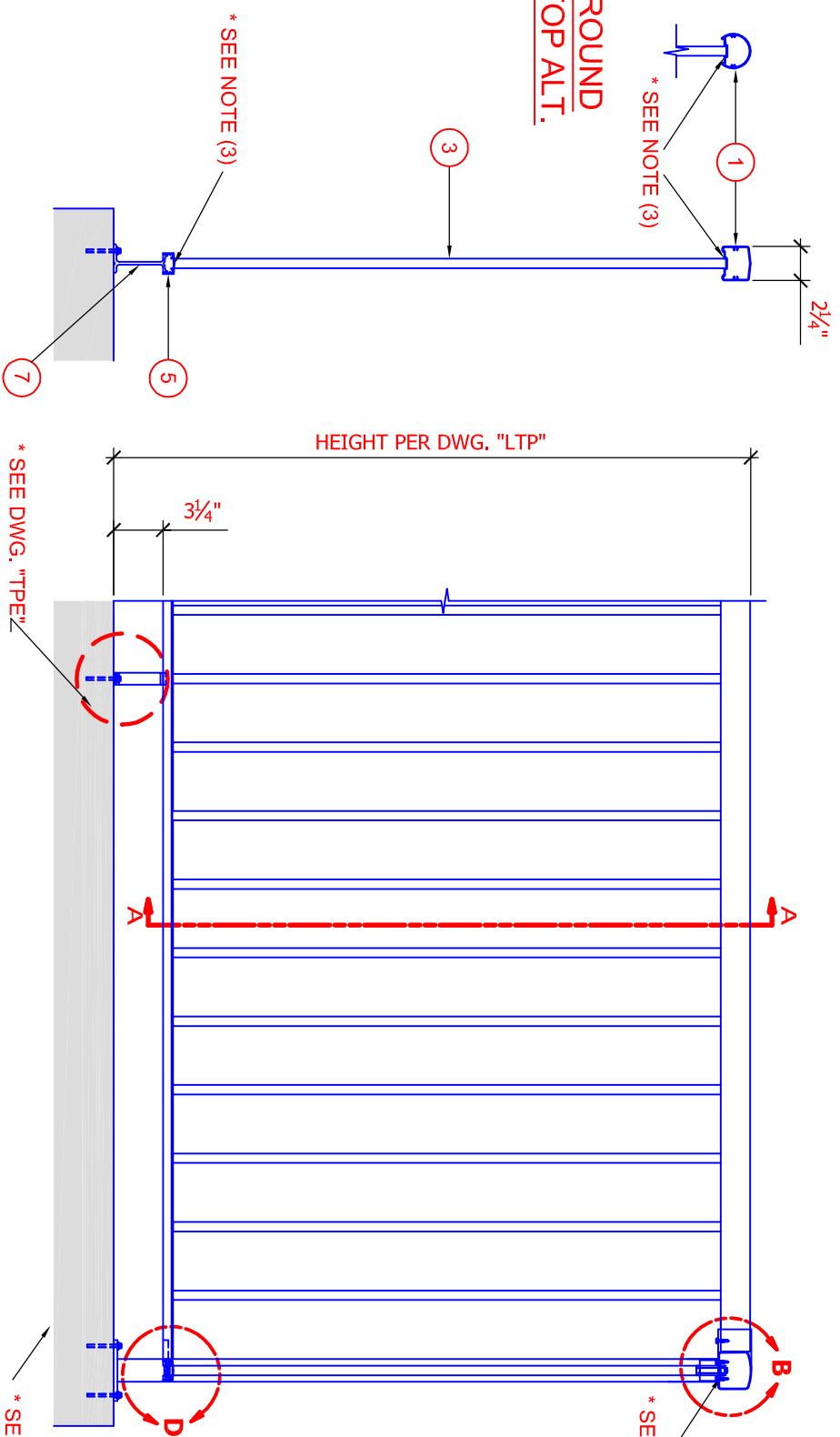
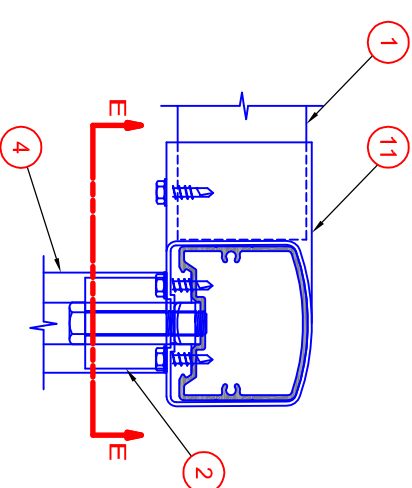


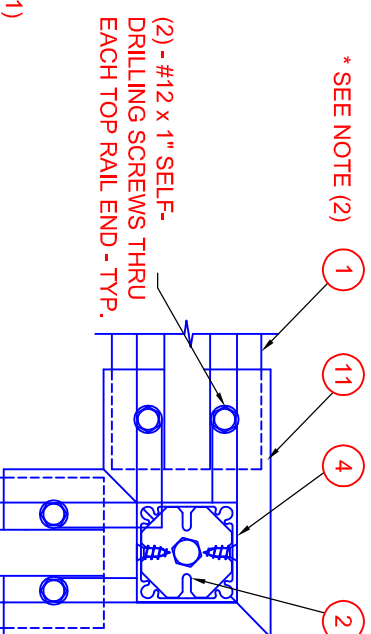
**ROUND  
TOP ALT.**



**ROUND TOP  
CORNER ALT.**

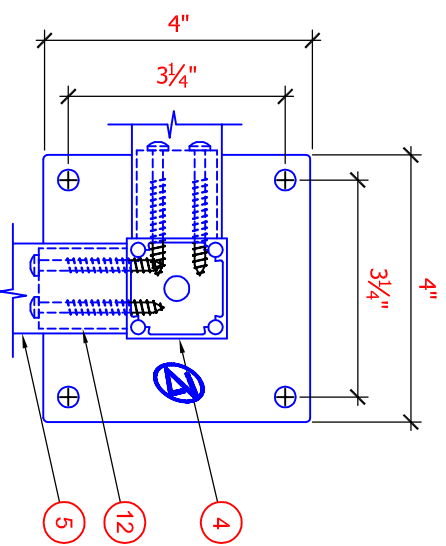


**DETAIL 'B'  
SQUARE TOP CORNER**

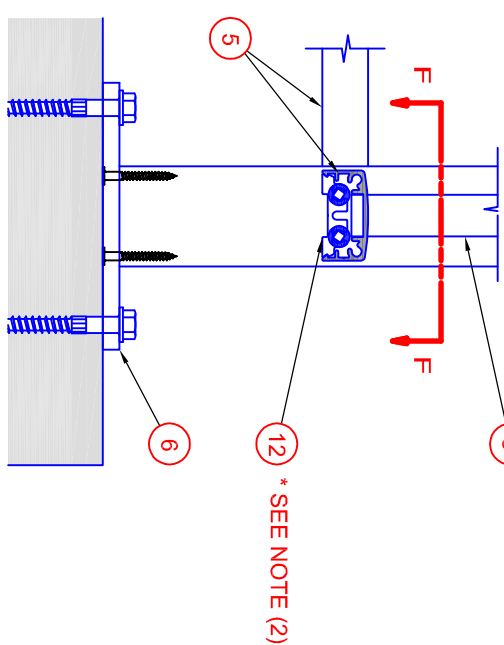


**SECTION E-E**

**SECTION A-A**

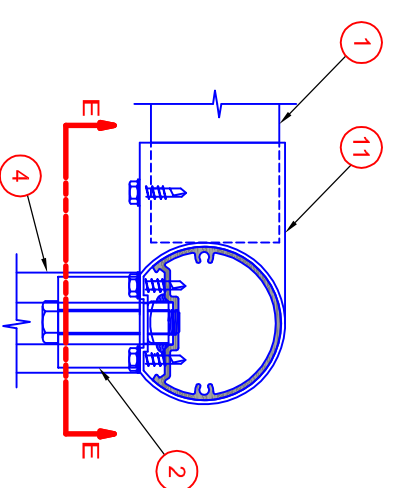


**SECTION F-F**



**ELEVATION**

**DETAIL 'D'  
BOTTOM CORNER**



**DETAIL 'C'  
ROUND TOP CORNER**

PARTS LIST	
ITEM	DESCRIPTION
1	2 1/4" SQUARE □ OR ROUND TOP □ RAIL (CHECK CORRECT BOX)
2	RAIL/POST CONNECTOR C/W 3/8"Ø NUT AND BOLT TO RAIL & (2) - #8 X 1/2" SCREWS TO POST
3	5/8" X 5/8" ALUMINUM PICKET
4	1 1/2" STANDARD ALUMINUM POST
5	1 3/8" X 3/4" BOTTOM CHANNEL
6	4" X 4" X 1/4" BASE C/W (4) - 5/16" Ø X 3 3/4" LAG SCREW INTO WOOD OR (4) - 3/8"Ø X 3" KWIK BOLTS II ANCHORS INTO CONCRETE AND TO POST W/ (4)#12 X 2" FLAT HEAD SCREWS
7	PICKET LEG C/W 1/4" Ø X 2 1/2" SCREW INTO WOOD OR #14 X 2" "TAPCON" ANCHOR INTO CONCRETE
8	(NOT SHOWN)
9	(NOT SHOWN)
10	(NOT SHOWN)
11	TOP RAIL EXTERNAL CORNER SLEEVE
12	CHANNEL BLOCK C/W (2) - #10 X 2" SCREWS TO POST

**NOTES:**  
 (1) BUILDING GENERAL CONTRACTOR IS RESPONSIBLE FOR PROVIDING ADEQUATE BACKING IN WALLS AND FLOORS TO AFFIX TO THE BUILDING THE ALUMINUM GUARDRAIL LAYOUT DEFINED IN THESE DRAWINGS  
 (2) ITEM #1 FITS INSIDE ITEM #11 ; ITEM #2 FITS INSIDE ITEM #4 ; ITEM #12 SNAPS INSIDE ITEM #5  
 (3) WELD PICKET TO UNDERSIDE OF TOP OF PART #1 OR #5



PROJECT: \_\_\_\_\_  
 CLIENT: \_\_\_\_\_  
 SITE LOCATION: \_\_\_\_\_

DRAWN	PROJECT
DESIGNED	CHECKED
SCALE	NTS
CREATED	JAN 07

No	DATE	ISSUE - REVISION

**TOP MOUNT PICKET  
1.5" CORNER POST**  
 DWG No. **TPC1.5**