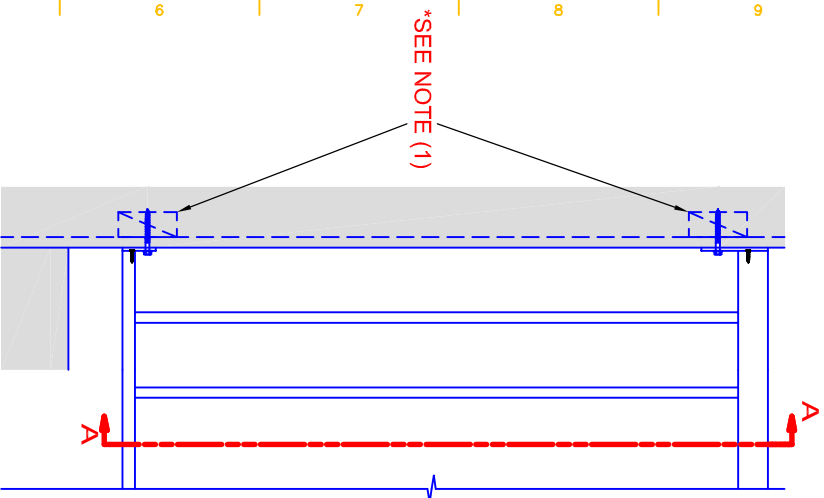
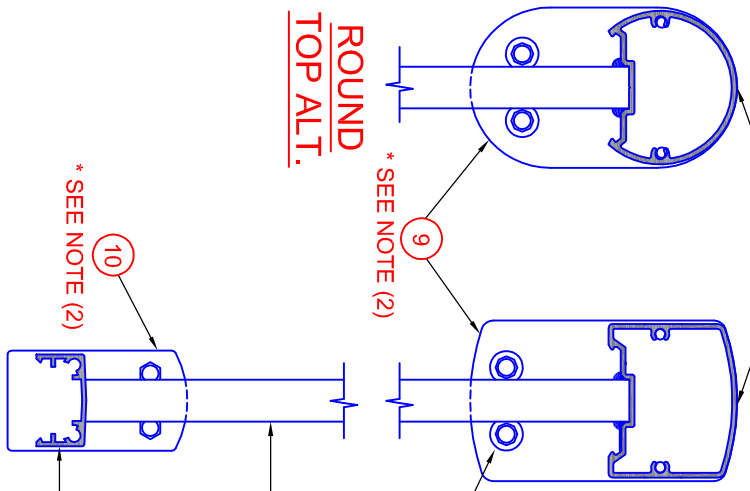


BUILDING CONNECTION

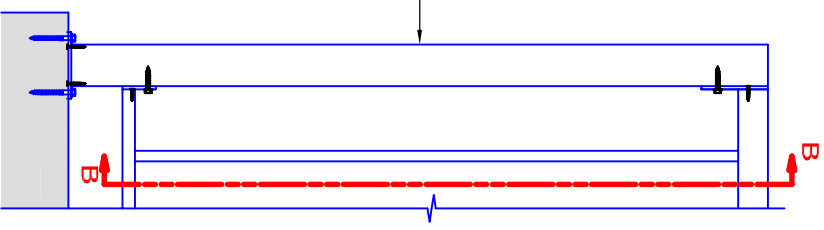


ROUND TOP ALT.

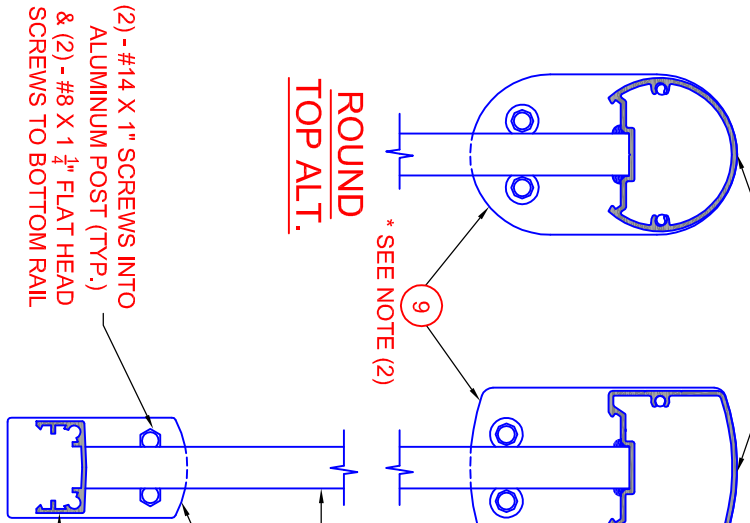


(2) - $\frac{1}{4}$ " \varnothing X 2 $\frac{1}{2}$ " SCREWS OR (2) - #14 X 2 $\frac{1}{2}$ " TAPCON ANCHORS INTO CONCRETE (TYP. FOR TOP & BOTTOM END CLIPS)

2 1/2" ALUMINUM POST CONNECTION



ROUND TOP ALT.



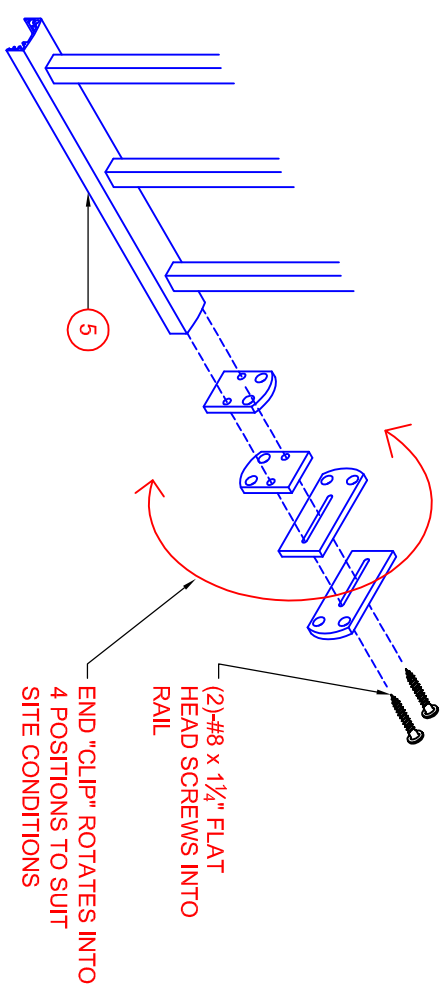
(2) - #14 X 1" SCREWS INTO ALUMINUM POST (TYP.) & (2) - #8 X 1 $\frac{1}{2}$ " FLAT HEAD SCREWS TO BOTTOM RAIL

PARTS LIST

ITEM	DESCRIPTION
1	2 1/2" SQUARE \square OR ROUND TOP \square RAIL (CHECK CORRECT BOX)
2	(NOT SHOWN)
3	5/8" X 5/8" ALUMINUM PICKET
4	2 1/2" STANDARD ALUMINUM POST
5	1 3/8" X 3/4" BOTTOM CHANNEL (NOT SHOWN)
6	(NOT SHOWN)
7	PICKET LEG (NOT SHOWN)
8	(NOT SHOWN)
9	TOP RAIL END CLIP
10	BOTTOM RAIL END CLIP (NOT SHOWN)
11	(NOT SHOWN)
12	(NOT SHOWN)

END CLIP CONNECTION

SECTION A-A

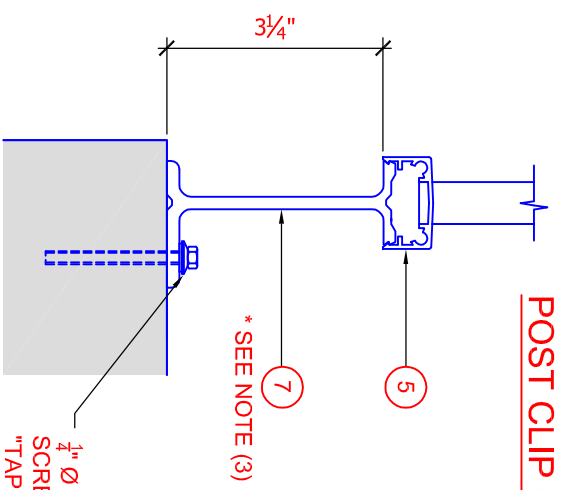


BOTTOM RAIL END CLIP ROTATION

(2)-#8 x 1 1/4" FLAT HEAD SCREWS INTO RAIL
END "CLIP" ROTATES INTO 4 POSITIONS TO SUIT SITE CONDITIONS

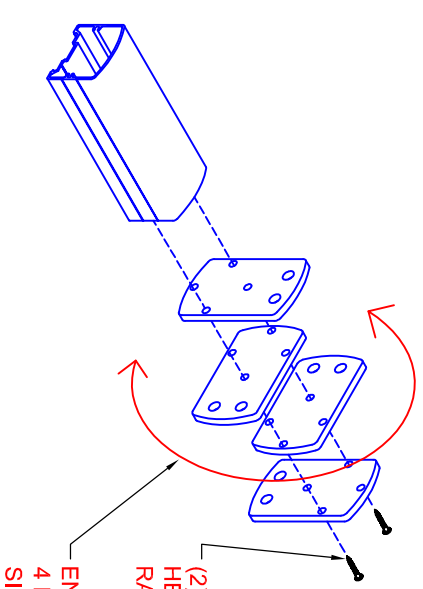
POST CLIP CONNECTION

SECTION B-B



PICKET LEG CONNECTION

$\frac{1}{4}$ " \varnothing X 2 $\frac{1}{2}$ " SCREW INTO WOOD OR #14 X 2" "TAPCON" ANCHOR INTO CONCRETE



TOP RAIL END CLIP ROTATION

(2)-#8 x 1 1/4" FLAT HEAD SCREWS INTO RAIL
END "CLIP" ROTATES INTO 4 POSITIONS TO SUIT SITE CONDITIONS

NOTES:
(1) BUILDING GENERAL CONTRACTOR MUST ENSURE THAT PROPER BACKING IS PROVIDED FOR FIRM ANCHORAGE OF GUARD RAIL ENDS
(2) TOP & BOTTOM END CLIPS ROTATE IN 4 POSITIONS (DEFAULT T POSITION SHOWN, ROTATE TO SUIT SITE CONDITIONS PER 3D DIAGRAM BELOW).
(3) PICKET LEG SNAPS INTO BOTTOM RAIL PROFILE (CONNECT PER "TP" DRAWINGS)



PROJECT:

CLIENT:

SITE LOCATION:

DRAWN	PROJECT
DESIGNED	CHECKED
SCALE	NTS
CREATED	JAN 07

No	DATE
ISSUE - REVISION	

TOP MOUNT PICKET END CONNECTIONS

TPE