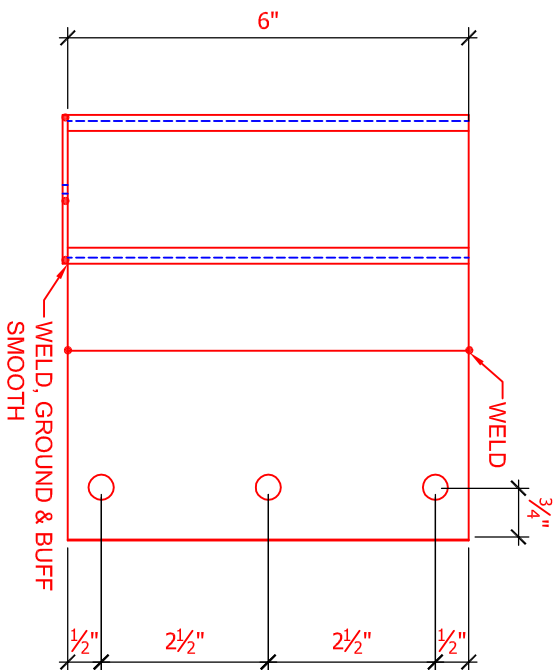


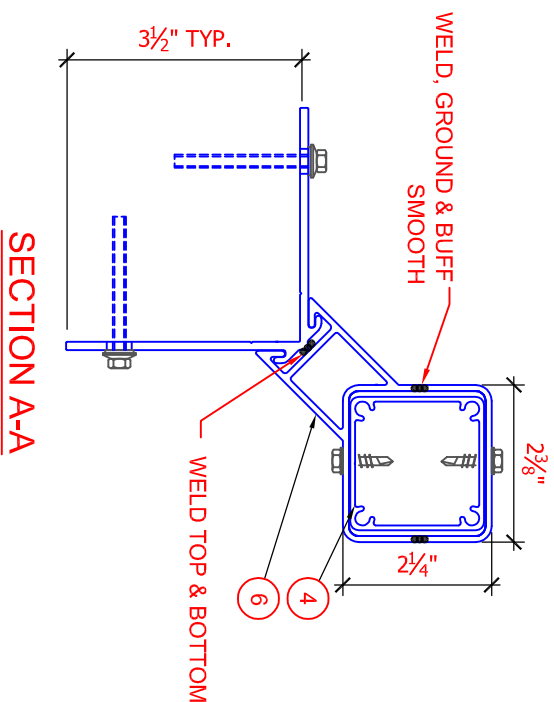


**FASCIA CORNER BRACKET DETAIL**

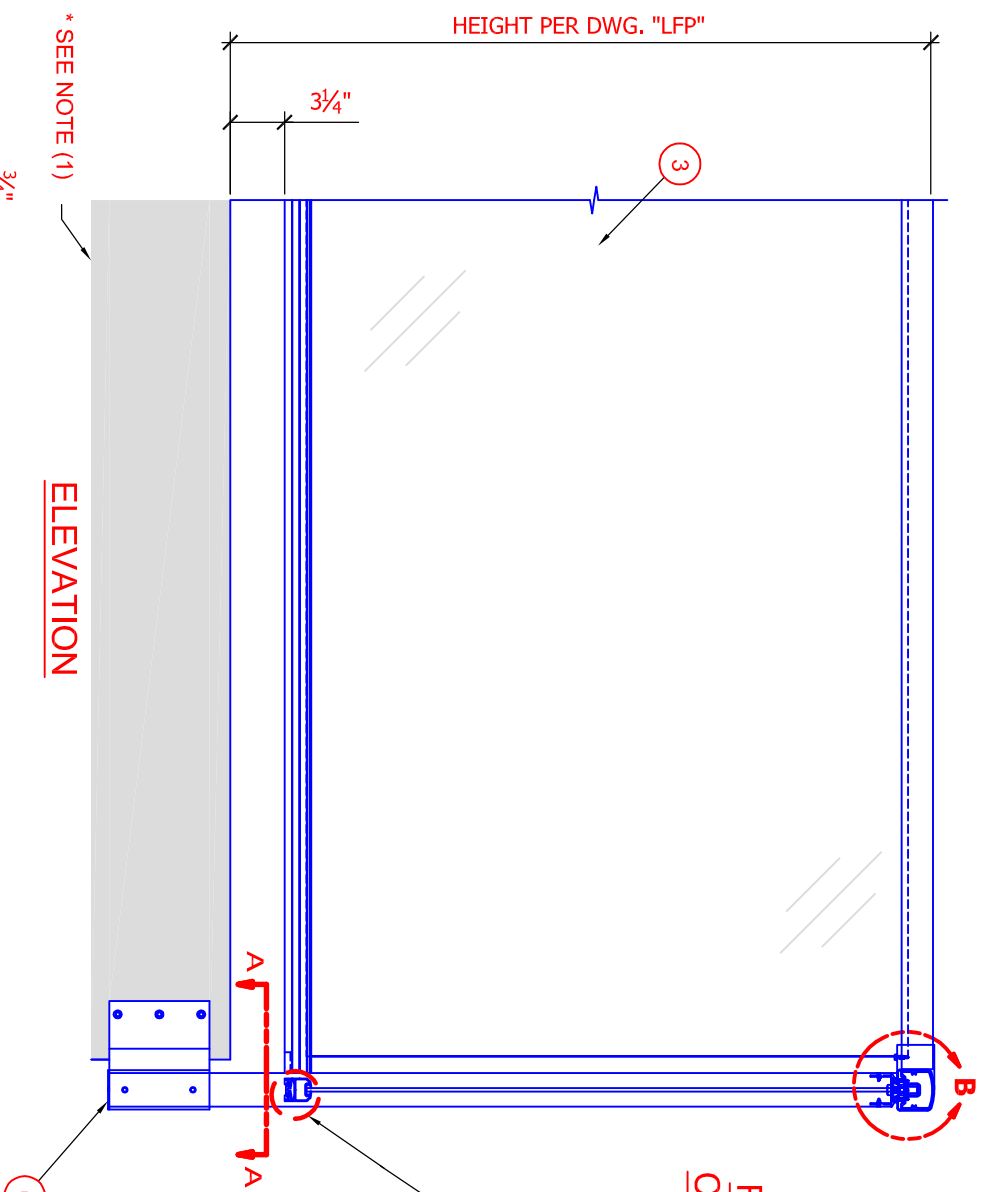


\* SEE NOTE (1)

**ELEVATION**



**SECTION A-A**

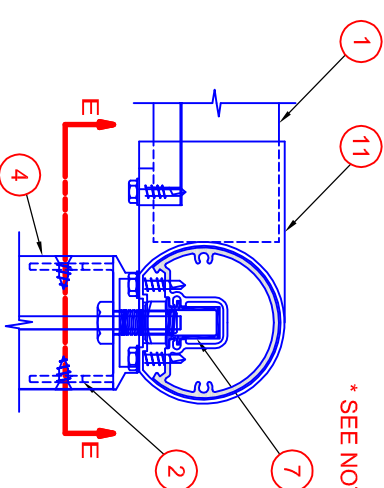


**ROUND TOP CORNER ALT.**

\* SEE NOTE (2)

**SQUARE TOP CORNER**

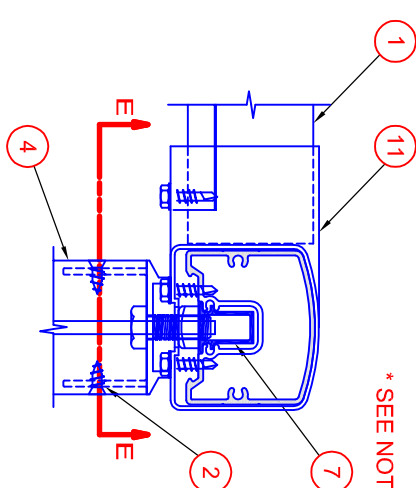
**SECTION E-E**



\* SEE NOTE (3)

**ROUND TOP CORNER**

**DETAIL 'C'**



\* SEE NOTE (3)

ITEM	DESCRIPTION
1	2 1/4" SQUARE □ OR ROUND TOP □ RAIL (CHECK CORRECT BOX)
2	RAIL/POST CONNECTOR C/W 3/8"Ø NUT AND BOLT TO RAIL & (2) - #8 X 1/2" SCREWS TO POST
3	TEMPERED GLASS PANEL 5mm THK. IN CANADA □ OR 1/4" THK. IN USA (CHECK CORRECT BOX)
4	2" STANDARD ALUMINUM POST
5	BOTTOM GLASS CHANNEL
6	FASCIA CORNER BRACKET (2" POST) C/W (6) - 1/8"Ø X 3 1/4" LAG SCREW INTO WOOD OR (6) - 3/8"Ø X 3" KWIK BOLTS II ANCHORS INTO CONCRETE AND TO POST W/ (4) - #14 X 1" HEX HEAD SCREWS C/W SHEET METAL THREADS AND 1/2" SHANK
7	TOP GLAZING GASKET
8	BOTTOM GLAZING GASKET
9	(NOT SHOWN)
10	(NOT SHOWN)
11	TOP RAIL EXTERNAL CORNER SLEEVE
12	CHANNEL BLOCK C/W (2) - #10 X 2" SCREWS TO POST

NOTES:  
 (1) BUILDING GENERAL CONTRACTOR IS RESPONSIBLE FOR PROVIDING ADEQUATE BACKING IN WALLS AND FLOORS TO AFFIX TO THE BUILDING THE ALUMINUM GUARDRAIL LAYOUT DEFINED IN THESE DRAWINGS

(2) ITEM #1 FITS INSIDE ITEM #11 ; ITEM #2 FITS INSIDE ITEM #4 ; ITEM #12 SNAPS INSIDE ITEM #5  
 (3) TOP & BOTTOM GLAZING GASKETS SNAP INTO THE TOP RAIL AND BOTTOM GLASS CHANNEL RESPECTIVELY.

PROJECT:

SITE LOCATION:

CLIENT:

-----  
 -----  
 -----

DRAWN	PROJECT
DESIGNED	CHECKED
SCALE	NTS
CREATED	JAN 07

No	DATE	ISSUE - REVISION

**FASCIA MOUNT GLASS 2.0" CORNER POST**  
 DWG No. **FGC2.0**