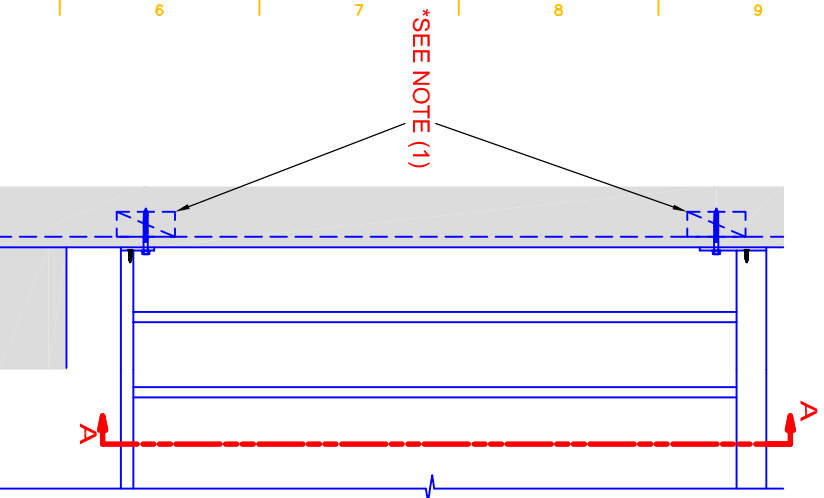
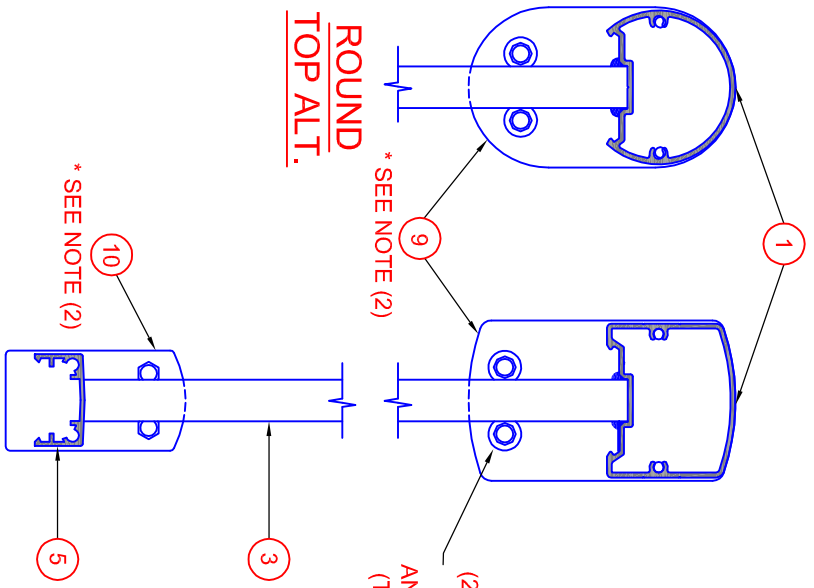


BUILDING CONNECTION



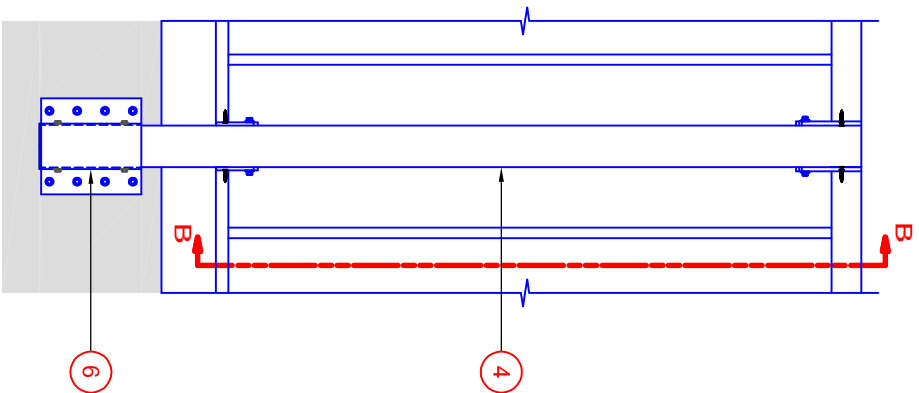
ROUND TOP ALT.



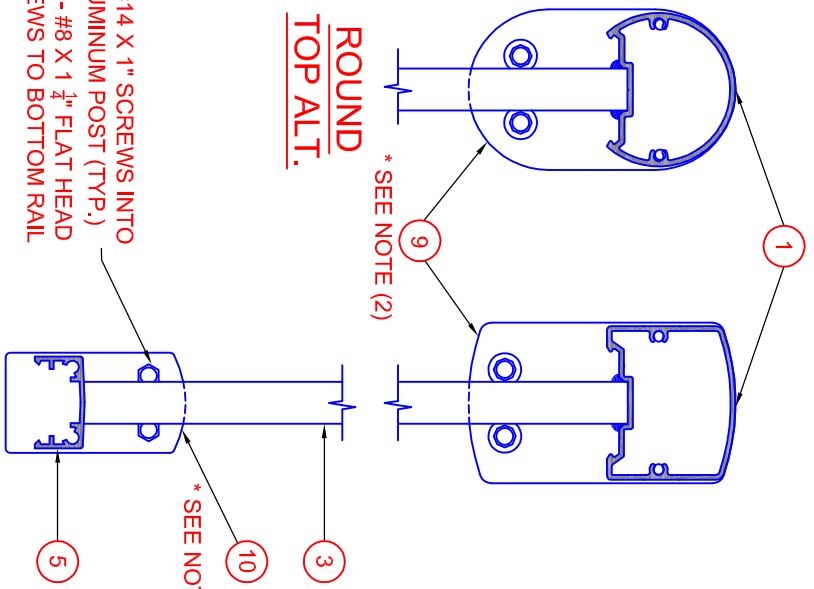
(2) - 1/4" Ø X 2 1/2" SCREWS OR (2) - #14 X 2 1/2" TAPCON ANCHORS INTO CONCRETE (TYP. FOR TOP & BOTTOM END CLIPS)

END CLIP CONNECTION

SECTION A-A



ROUND TOP ALT.



(2) - #14 X 1" SCREWS INTO ALUMINUM POST (TYP.) & (2) - #8 X 1 1/2" FLAT HEAD SCREWS TO BOTTOM RAIL

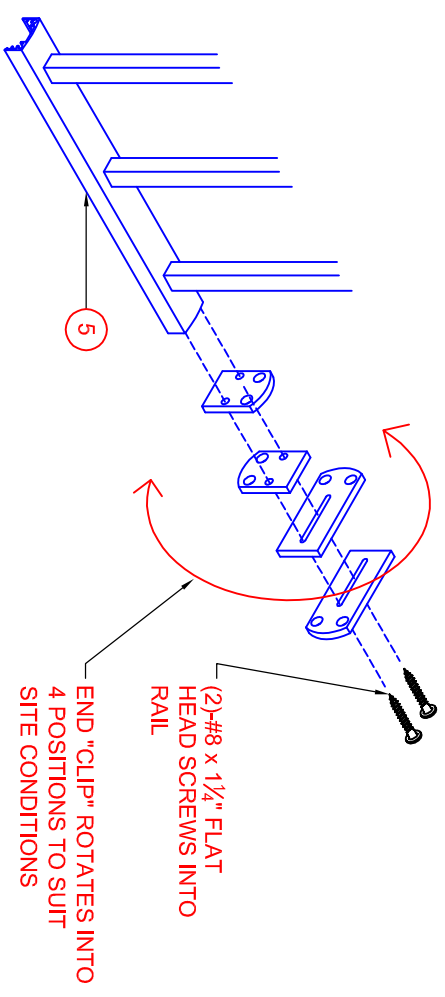
2 1/2" ALUMINUM POST CONNECTION

PARTS LIST

ITEM	DESCRIPTION
1	2 1/2" SQUARE □ OR ROUND TOP □ RAIL (CHECK CORRECT BOX)
2	(NOT SHOWN)
3	5/8" X 5/8" ALUMINUM PICKET
4	2 1/2" STANDARD ALUMINUM POST
5	1 3/8" X 3/4" BOTTOM CHANNEL
6	FASCIA BRACKET (2 1/2" POST)
7	(NOT SHOWN)
8	(NOT SHOWN)
9	TOP RAIL END CLIP
10	BOTTOM RAIL END CLIP
11	(NOT SHOWN)
12	(NOT SHOWN)

POST CLIP CONNECTION

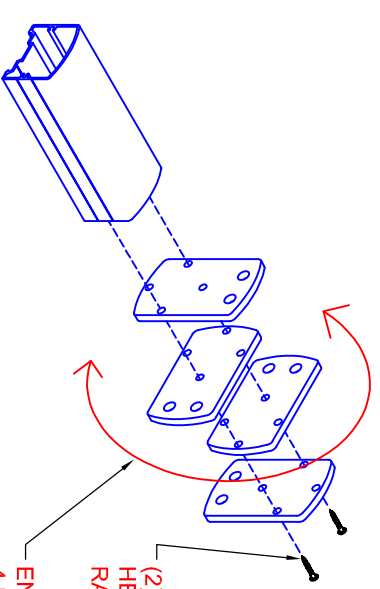
SECTION B-B



BOTTOM RAIL END CLIP ROTATION

(2)-#8 x 1 1/4" FLAT HEAD SCREWS INTO RAIL
END "CLIP" ROTATES INTO 4 POSITIONS TO SUIT SITE CONDITIONS

NOTES:
(1) BUILDING GENERAL CONTRACTOR MUST ENSURE THAT PROPER BACKING IS PROVIDED FOR FIRM ANCHORAGE OF GUARD RAIL ENDS
(2) TOP & BOTTOM END CLIPS ROTATE IN 4 POSITIONS (DEFAULT POSITION SHOWN, ROTATE TO SUIT SITE CONDITIONS PER 3D DIAGRAM BELOW.



TOP RAIL END CLIP ROTATION

(2)-#8 x 1 1/4" FLAT HEAD SCREWS INTO RAIL
END "CLIP" ROTATES INTO 4 POSITIONS TO SUIT SITE CONDITIONS



PROJECT:

CLIENT:

SITE LOCATION:

DRAWN	PROJECT
DESIGNED	CHECKED
SCALE	NTS
CREATED	JAN 07

No	DATE
ISSUE - REVISION	

FASCIA MOUNT PICKET END CONNECTIONS

DWG No.

