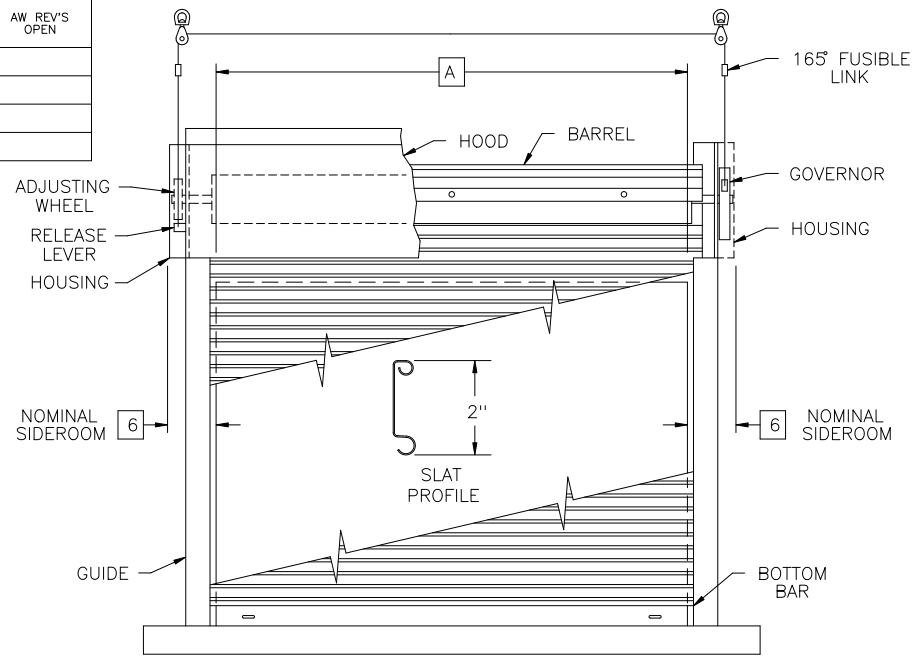
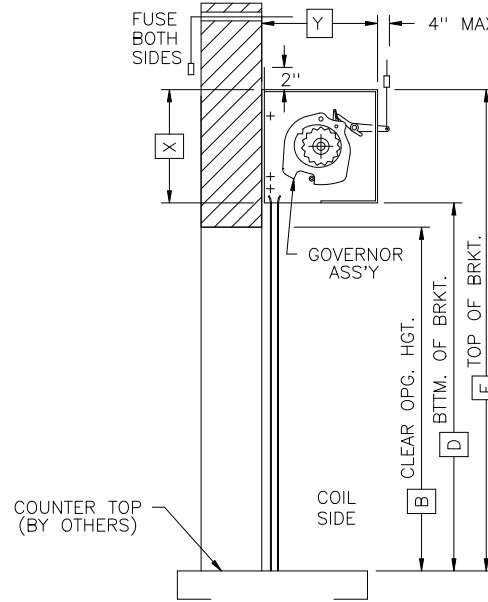


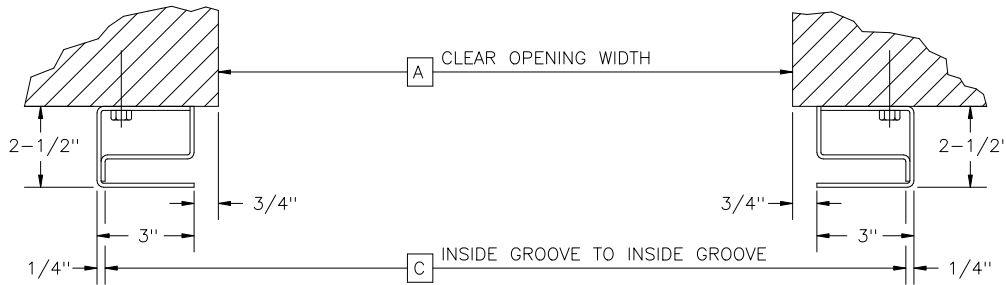
ITEM NO.	AW REV'S OPEN
01	



**COILSIDE ELEVATION**  
RIGHT HAND OPERATED DOOR SHOWN  
LEFT HAND OPERATED DOOR OPPOSITE



**VERTICAL SECTION**



**GUIDE SECTION**

NOTE: WIDTH **C** IS IMPORTANT AND MUST BE HELD

DOOR QTY.	ITEM NO.	HAND OF OPER.	CUST. OPG. NO.	WIDTHS			HEIGHTS			GUIDE TYPE		FOR BRACKET		SLAT LENGTH
				A	C	E	B	D	F	L	R	X	Y	
1	01	RH		5' 0"	5' 7"	---	4' 0"	4' 2-1/2"	5' 1-1/2"			10"	10-1/8"	5' 5-1/4"

FCSF

**GENERAL NOTES**

DESIGNED IAW U.L. SPECIFICATIONS WITH AUTOMATIC CLOSURE. ALTERNATE ENDLOCKS, ROLLED FORMED GUIDES, AND TUBULAR BOTTOM BAR IS STANDARD. CURTAIN IS 22 GA STEEL, FLAT TYPE 17. BOTTOM BAR IS GALVANIZED STEEL. GUIDES ARE BOX TYPE, FORMED STEEL. HOODS ARE 24 GA GALVANIZED STEEL.

**NOTES**

- CURTAIN FINISH : GALV & PRIMED STEEL
- BOTTOM BAR FINISH : PRIMED STEEL
- GUIDE FINISH : PRIMED STEEL
- OPTIONS ON THIS/THESE DOORS :
  - SLIDE BOLTS OPERABLE COIL SIDE ENGAGING BOTH JAMBS
  - FRONT HOOD : GALV & PRIMED STEEL
  - OPER COVER : GALV & PRIMED STEEL
  - AW COVER : GALV & PRIMED STEEL

NOTE: THIS DRAWING IS INTENDED FOR EXAMPLE PURPOSES ONLY. DIMENSIONS WILL CHANGE WITH DOOR SIZE. CONSULT FACTORY FOR SPECIFIC DETAILS PER JOB.



Rolling Door Division

ATLER FIRE SHUTTER MODEL : FCSF1PS

PROJECT : **SAMPLE DRAWING**

ARCH :	
G.C. :	
DISTR :	
DISTR P.O. NO. :	PREPARED BY :
	DATE : 12/11/95
QUOTE NUMBER	ORDER NUMBER
	DWG. NO.
	OF

Target: Scale to fit 11x17  
ATLER FIRE SHUTTER