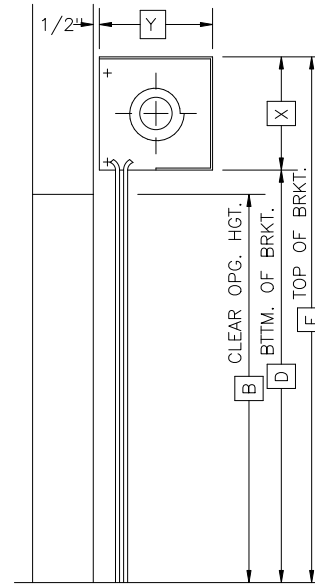
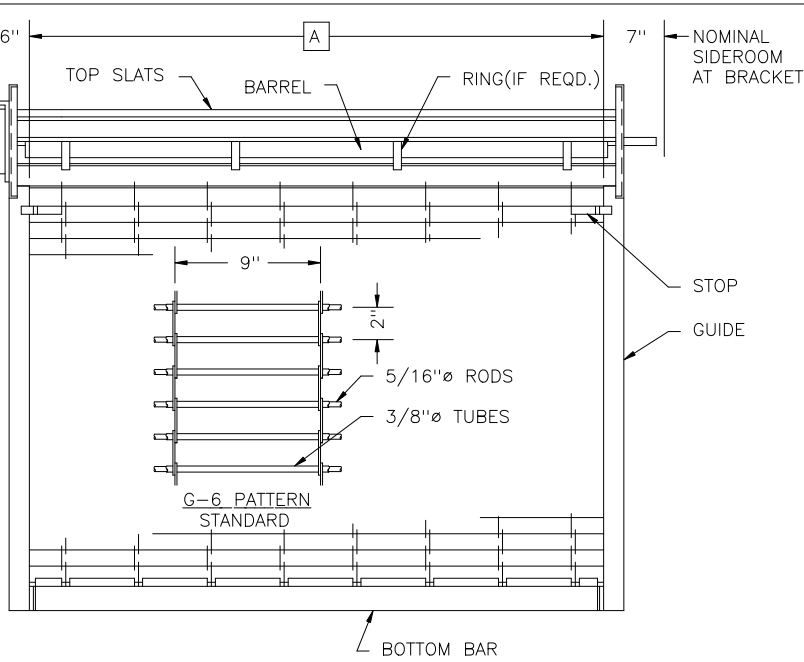
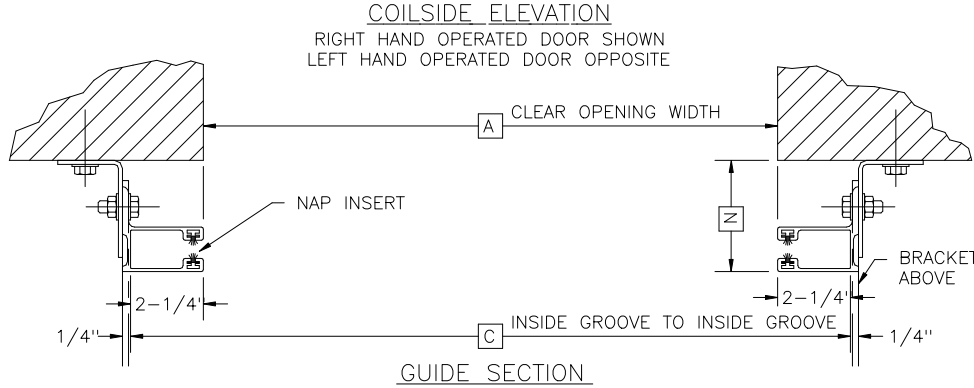


| | |
|----------|---------------|
| ITEM NO. | AW REV'S OPEN |
| 01 | |

ADJUSTING WHEEL(AW)

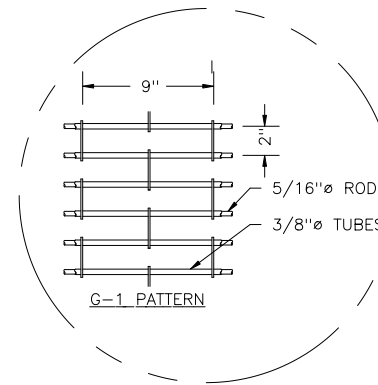


VERTICAL SECTION



COILSIDE ELEVATION

RIGHT HAND OPERATED DOOR SHOWN
LEFT HAND OPERATED DOOR OPPOSITE



OPTIONAL STANDARD PATTERN

RGF1

GENERAL NOTES

CURTAIN IS HOLLOW TUBES OVER GALVANIZED STEEL RODS. BOTTOM BAR IS TUBULAR TYPE GUIDES ARE EXTRUDED ALUM WITH POLYPROPYLENE INSERTS. BRACKET PLATES ARE STEEL. GALVANIZING PER ASTM STANDARDS. SHOP COAT OF RUST INHIBITIVE PRIMER ON ALL EXPOSED NONGALVANIZED STEEL SURFACES.

NOTES

CURTAIN FINISH : MILL FINISH ALUMINUM
BOTTOM BAR FINISH : MILL FINISH ALUMINUM
GUIDE FINISH : MILL FINISH ALUMINUM
OPTIONS ON THIS/THESE DOORS :

SLIDE BOLTS OPERABLE COIL SIDE
ENGAGING BOTH JAMBS

NOTE: THIS DRAWING IS INTENDED FOR EXAMPLE PURPOSES ONLY. DIMENSIONS WILL CHANGE WITH DOOR SIZE. CONSULT FACTORY FOR SPECIFIC DETAILS PER JOB.



Rolling Door Division

ROLLING GRILLE MODEL : RGF1MA

PROJECT : SAMPLE DRAWING

ARCH :
G.C. :
DISTR :
DISTR P.O. NO. : PREPARED BY : DATE : 12/11/95

QUOTE NUMBER ORDER NUMBER DWG. NO. OF

NOTE : WIDTH C IS IMPORTANT AND MUST BE HELD

| DOOR QTY. | ITEM NO. | HAND OF OPER. | CUST. OPG. NO. | WIDTHS | | | HEIGHTS | | | GUIDE | FOR BRACKET | | | ROD LENGTH |
|-----------|----------|---------------|----------------|--------|-----------|---|---------|-------|-------|---------|-------------|-----|-----------|------------|
| | | | | A | C | E | B | D | F | | N | X | Y | |
| 1 | 01 | RH | | 10'0" | 10'4-1/2" | | 10'0" | 10'3" | 11'8" | 4-7/16" | 17" | 17" | 10'3-1/4" | |

Target: Scale to fit 11x17

ROLLING GRILLE