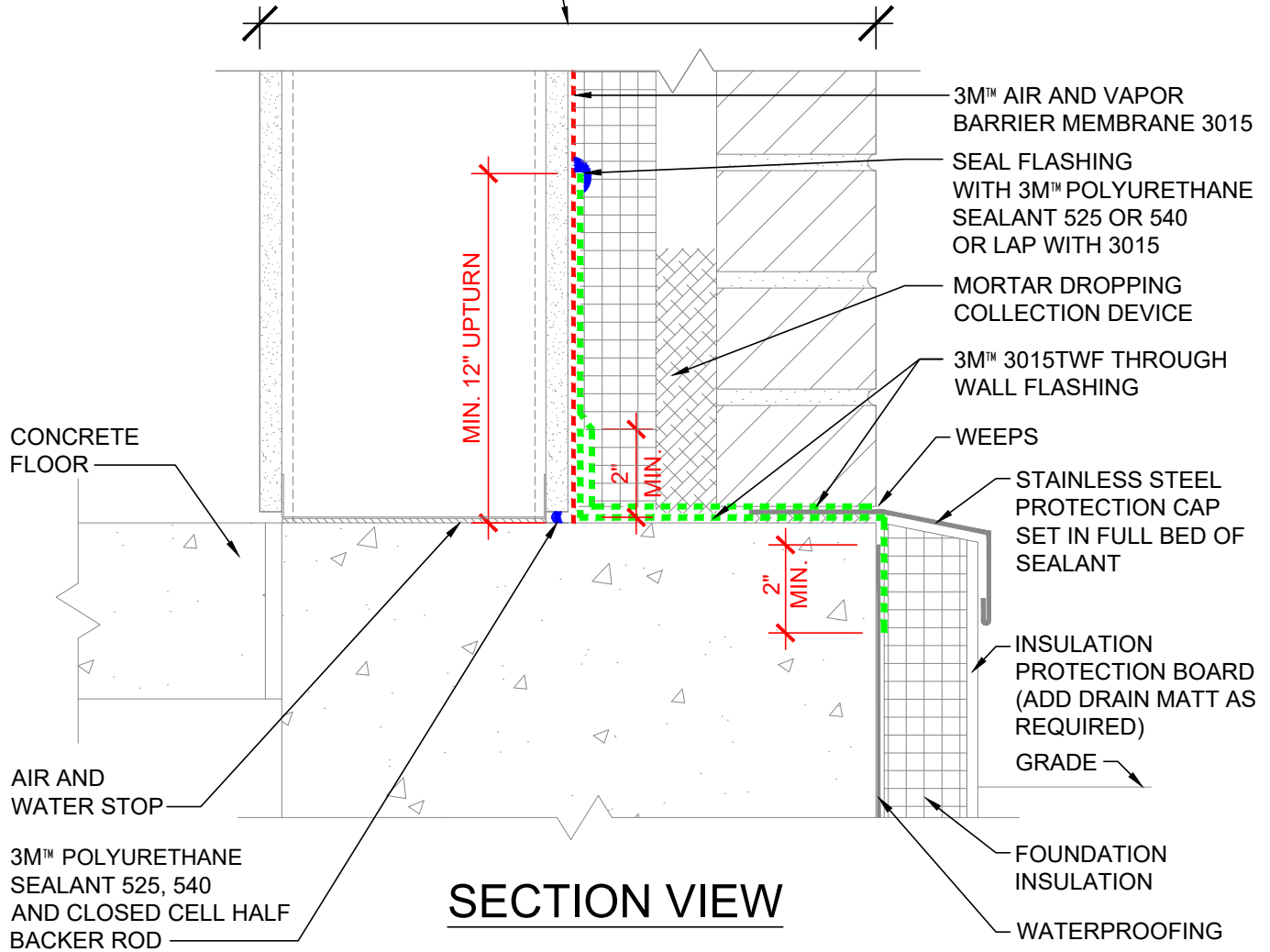


WALL DESIGN BY OTHERS CONSIST OF:

- INTERIOR SHEATHING
- STEEL/WOOD STUD
- EXTERIOR SHEATHING
- 3M™ AIR AND VAPOR BARRIER 3015
- CONTINUOUS INSULATION
- AIR SPACE
- FINISH FACADE



**NOTES:**

1. LAP JOINTS AND SEAMS IN MEMBRANE SYSTEM A MINIMUM OF 2".
2. FOR NEGATIVE LAPS, SEAL TOP EDGE WITH 3M™ 525 OR 540 SEALANT.
3. IF GAP AT FLOOR SLAB EXCEEDS 1/4" BUT IS LESS THAN 1/2" ONLY SEALANT IS REQUIRED.
4. CAVITY WALL TIES NOT SHOWN. REFER TO 3M DETAIL 16.0A FOR CONDITION AT CAVITY WALL TIES
5. PROVIDE END DAMS AS REQUIRED BY WALL DESIGN.

**3M™ Air and Vapor Barrier Membrane 3015**



PROJECT NAME:	DATE:	DETAIL No:
SYSTEM MATERIAL: 3015VP, 3015TWF AND 525/540	09/03/19	3015-1.1A
TITLE: BRICK VENEER / STEEL/WOOD STUD WALL BASE (OUT OF SEQUENCE - FIELD FIRST, FLASHING SECOND)	SCALE:	
	N.T.S.	
	DRAWN BY:	
	J.M.B. / D.N.C.	

THE DETAILS DEPICTED ABOVE ARE REPRESENTATIVE OF STANDARD CONDITIONS. MODIFICATIONS ARE REQUIRED FOR THE SPECIFIC INSTALLATIONS OF YOUR PROJECT, PLEASE CONTACT A TECHNICAL REPRESENTATIVE FOR ASSISTANCE.