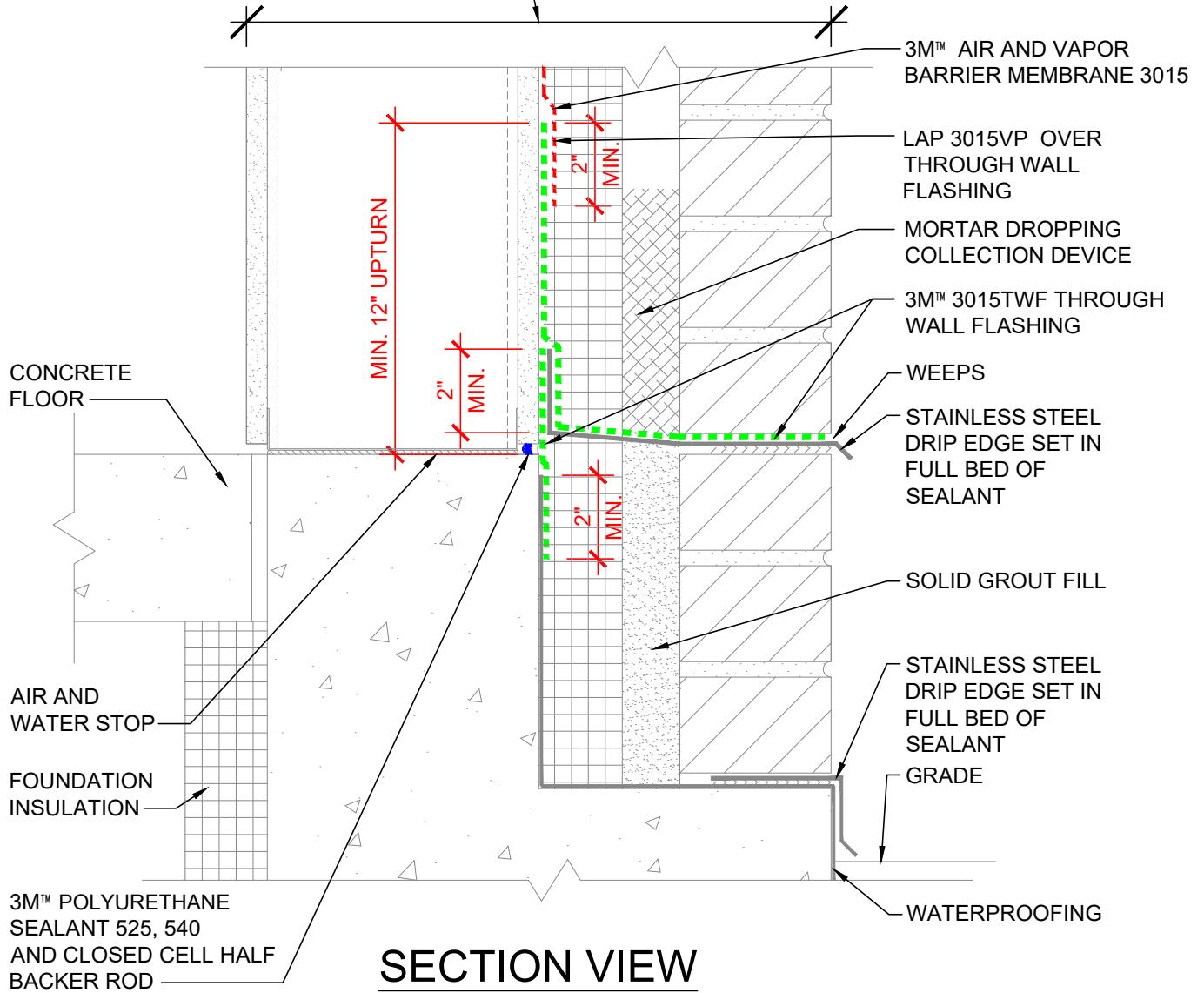


WALL DESIGN BY OTHERS CONSIST OF:

- INTERIOR SHEATHING
- STEEL/WOOD STUD
- EXTERIOR SHEATHING
- 3M™ AIR AND VAPOR BARRIER 3015
- CONTINUOUS INSULATION
- AIR SPACE
- FINISH FACADE



NOTES:

1. LAP JOINTS AND SEAMS IN MEMBRANE SYSTEM A MINIMUM OF 2".
2. FOR NEGATIVE LAPS, SEAL TOP EDGE WITH 3M™ 525 OR 540 SEALANT.
3. IF GAP AT FLOOR SLAB EXCEEDS 1/4" BUT IS LESS THAN 1/2" ONLY SEALANT IS REQUIRED.
4. CAVITY WALL TIES NOT SHOWN. REFER TO 3M DETAIL 16.0A FOR CONDITION AT CAVITY WALL TIES.
5. PROVIDE END DAMS AS REQUIRED BY WALL DESIGN.

3M™ Air and Vapor Barrier Membrane 3015



PROJECT NAME:	DATE:	DETAIL No:
SYSTEM MATERIAL: 3015, 3015TWF AND 525/540	09/03/19	3015-1.2A
TITLE: BRICK VENEER / STEEL / WOOD STUD WALL BASE / BRICK LEDGE (IN SEQUENCE)	SCALE: N.T.S.	
	DRAWN BY: J.M.B. / D.N.C.	

THE DETAILS DEPICTED ABOVE ARE REPRESENTATIVE OF STANDARD CONDITIONS. MODIFICATIONS ARE REQUIRED FOR THE SPECIFIC INSTALLATIONS OF YOUR PROJECT, PLEASE CONTACT A TECHNICAL REPRESENTATIVE FOR ASSISTANCE.