

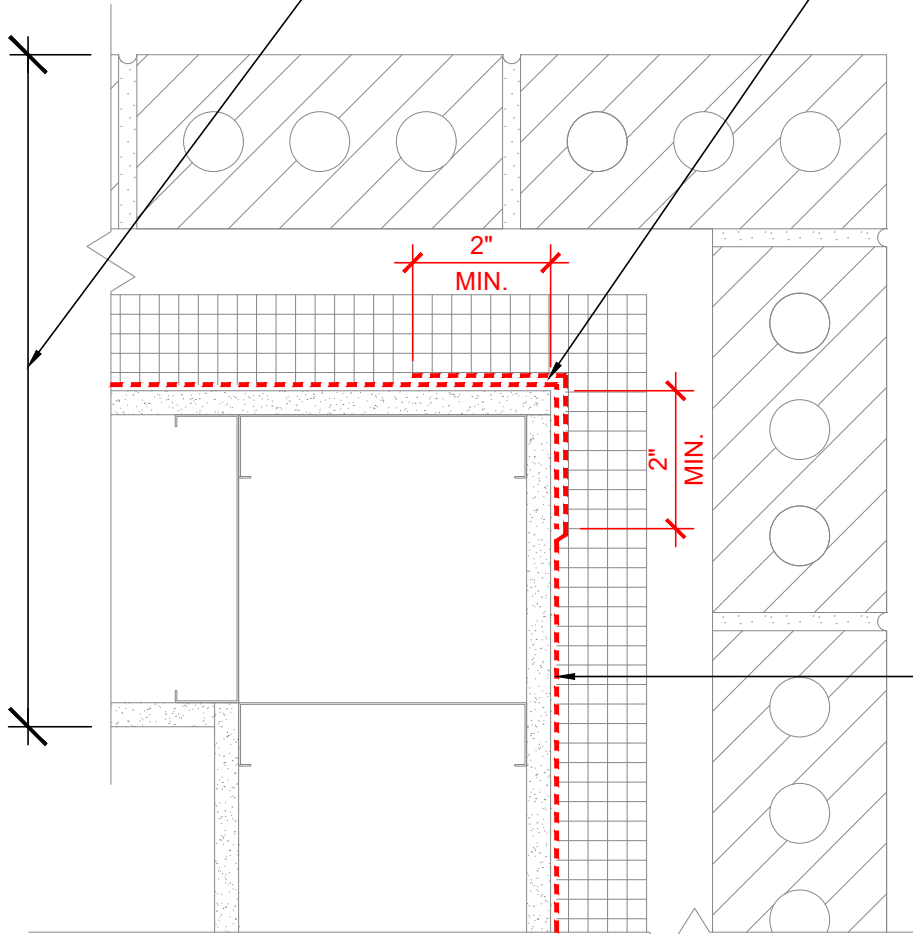
WALL DESIGN BY OTHERS CONSIST OF:

- INTERIOR SHEATHING
- STEEL/WOOD STUD
- EXTERIOR SHEATHING
- 3M™ AIR AND VAPOR BARRIER 3015
- CONTINUOUS INSULATION
- AIR SPACE
- FINISH FACADE

2-LAYERS OF AIR BARRIER REQUIRED:

OPTION 1). OVERLAP FIELD AREA OF 3015VP TO CREATE 2-LAYERS AT OUTSIDE CORNER (DEPICTED)

OPTION 2). DETAIL CORNER WITH 6" WIDE 3015 OR 3015TWF OVER OR BEHIND FIELD APPLIED 3015VP MEMBRANE



PLAN VIEW

NOTES:

1. LAP JOINTS AND SEAMS IN MEMBRANE SYSTEM A MINIMUM OF 2".
2. FOR NEGATIVE LAPS, SEAL TOP EDGE WITH 3M™ 525 OR 540 SEALANT.

3M™ Air and Vapor Barrier Membrane 3015



PROJECT NAME:	DATE:	DETAIL No:
SYSTEM MATERIAL: 3015, 3015TWF AND 525/540	09/03/19	3015-11.0A
TITLE: BRICK VENEER / STUD / WOOD WALL EXTERIOR CORNER	SCALE: N.T.S.	
	DRAWN BY: J.M.B. / D.N.C.	

THE DETAILS DEPICTED ABOVE ARE REPRESENTATIVE OF STANDARD CONDITIONS. MODIFICATIONS ARE REQUIRED FOR THE SPECIFIC INSTALLATIONS OF YOUR PROJECT, PLEASE CONTACT A TECHNICAL REPRESENTATIVE FOR ASSISTANCE.