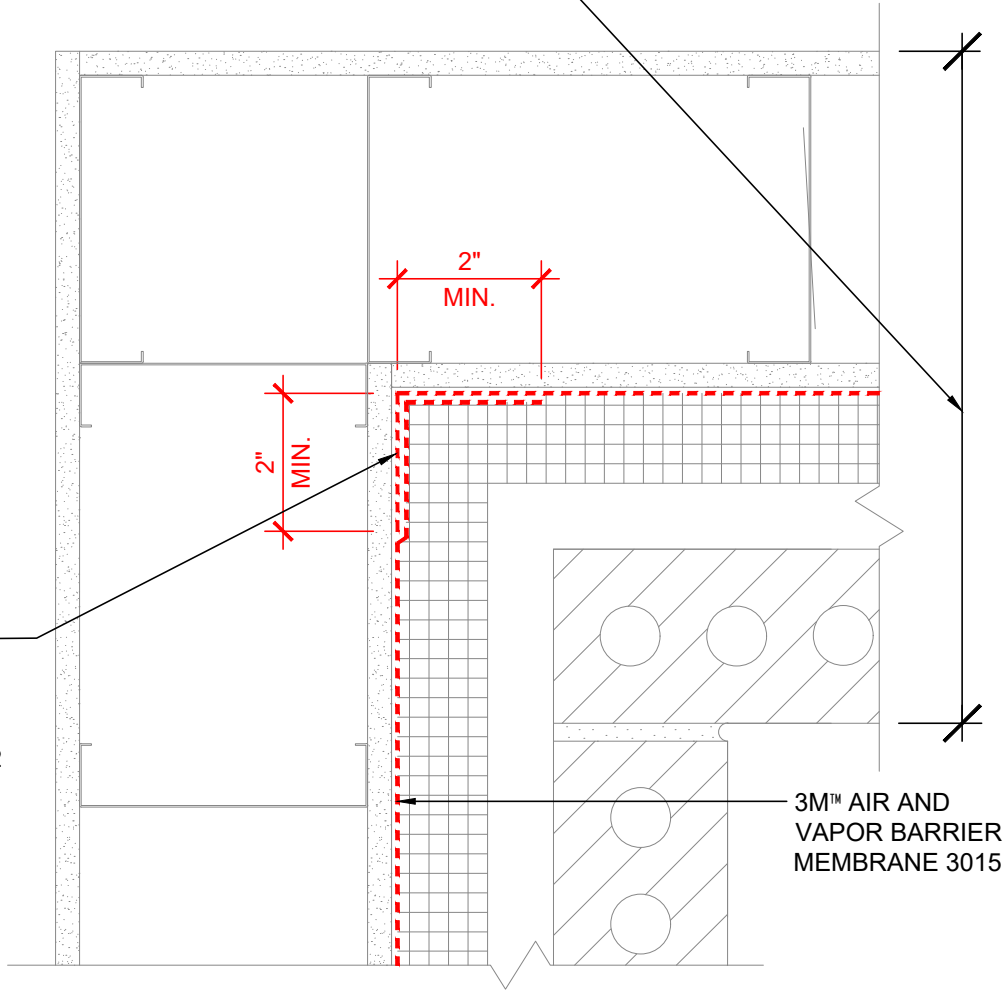


WALL DESIGN BY OTHERS CONSIST OF:

- INTERIOR SHEATHING
- STEEL/WOOD STUD
- EXTERIOR SHEATHING
- 3M™ AIR AND VAPOR BARRIER 3015
- CONTINUOUS INSULATION
- AIR SPACE
- FINISH FACADE



2 LAYERS OF AIR BARRIER REQUIRED:

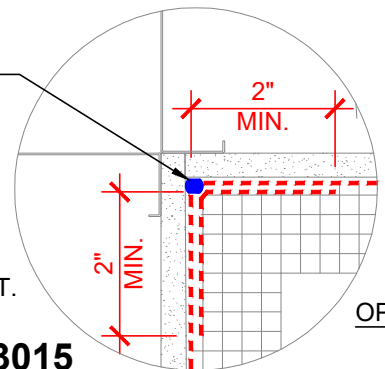
OPTION 1). OVERLAP FIELD AREA OF 3015 TO CREATE 2 LAYERS AT INSIDE CORNER (DEPICTED).

OPTION 2). DETAIL CORNER WITH 6" WIDE 3015 OR 3015TWF PRIOR TO FIELD APPLICATION OF 3015.

OPTION 3). 1ST LAYER 525 OR 540 SEALANT AT SEAM, 2ND LAYER 6" WIDE 3015 OR 3015 TWF. (DEPICTED IN PARTIAL DETAIL)

3M™ POLYURETHANE SEALANT 525/540 IN CORNER AT SEAM

PLAN VIEW



NOTES:

1. LAP JOINTS AND SEAMS IN MEMBRANE SYSTEM A MINIMUM OF 2".
2. FOR NEGATIVE LAPS, SEAL TOP EDGE WITH 3M™ 525 OR 540 SEALANT.

3M™ Air and Vapor Barrier Membrane 3015



PROJECT NAME:	DATE:	DETAIL No:
SYSTEM MATERIAL: 3015, 3015TWF AND 525/540	09/03/19	3015-12.0A
TITLE: BRICK VENEER / STEEL / WOOD STUD WALL INTERIOR CORNER	SCALE: N.T.S.	
	DRAWN BY: J.M.B. / D.N.C.	

THE DETAILS DEPICTED ABOVE ARE REPRESENTATIVE OF STANDARD CONDITIONS. MODIFICATIONS ARE REQUIRED FOR THE SPECIFIC INSTALLATIONS OF YOUR PROJECT, PLEASE CONTACT A TECHNICAL REPRESENTATIVE FOR ASSISTANCE.