

WALL DESIGN BY OTHERS CONSIST OF:

- INTERIOR SHEATHING
- STEEL/WOOD STUD
- EXTERIOR SHEATHING
- 3M™ AIR AND VAPOR BARRIER 3015
- CONTINUOUS INSULATION
- AIR SPACE
- FINISH FACADE

CAP SEAL FLASHING WITH 3M™ POLYURETHANE SEALANT 525 OR 540 OR LAP WITH 3015

LAP FIELD 3015 MEMBRANE OVER FLASHING MEMBRANE

FLASHING MEMBRANE SELECT ONE OR MORE OF THE FOLLOWING: 3015, 3015TWF, 3015UC, 3015LF

3M™ AIR AND VAPOR BARRIER MEMBRANE 3015

3M™ 3015TWF THROUGH WALL FLASHING

MORTAR DROPPING COLLECTION DEVICE  
STAINLESS STEEL DRIP EDGE IN FULL BED OF SEALANT

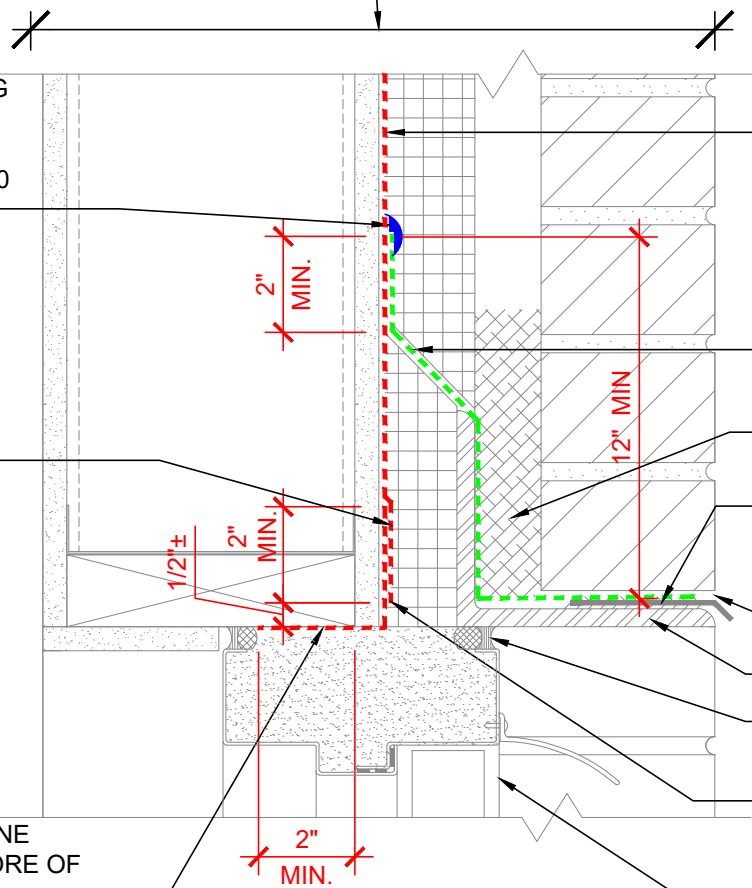
WEEPS

STEEL LINTEL ANGLE

BACKER ROD AND SEALANT

APPLY FIELD SHEET MEMBRANE ±1/2" FROM CORNER

H.M. DOOR AND FRAME



### SECTION VIEW

**NOTES:**

1. LAP JOINTS AND SEAMS IN MEMBRANE SYSTEM A MINIMUM OF 2".
2. CONNECTION OF AIR AND VAPOR BARRIER TO WINDOW OR DOOR SYSTEM TO BE CONFIRMED WITH WINDOW OR DOOR MANUFACTURER.
3. FOR NEGATIVE LAPS, SEAL TOP EDGE WITH 3M™ 525 OR 540 SEALANT.
4. REFER TO 3M WEBSITE FOR COMPATIBLE SEALANTS.
5. CAVITY WALL TIES NOT SHOWN. REFER TO 3M DETAIL 16.0A FOR CONDITION AT CAVITY WALL TIES.

### 3M™ Air and Vapor Barrier Membrane 3015



PROJECT NAME:	DATE:	DETAIL No:
SYSTEM MATERIAL: 3015, 3015TWF, 3015UC, 3015LF AND 525/540	09/03/19	3015-17.1B
TITLE: BRICK VENEER / STEEL / WOOD STUD WALL H.M. DOOR HEAD W/ ANGLE IN FRONT OF INSUL. (OUT OF SEQUENCE - FLASHING FIRST, FIELD SECOND)	SCALE: N.T.S.	
	DRAWN BY: J.M.B. / D.N.C.	

THE DETAILS DEPICTED ABOVE ARE REPRESENTATIVE OF STANDARD CONDITIONS. MODIFICATIONS ARE REQUIRED FOR THE SPECIFIC INSTALLATIONS OF YOUR PROJECT, PLEASE CONTACT A TECHNICAL REPRESENTATIVE FOR ASSISTANCE.