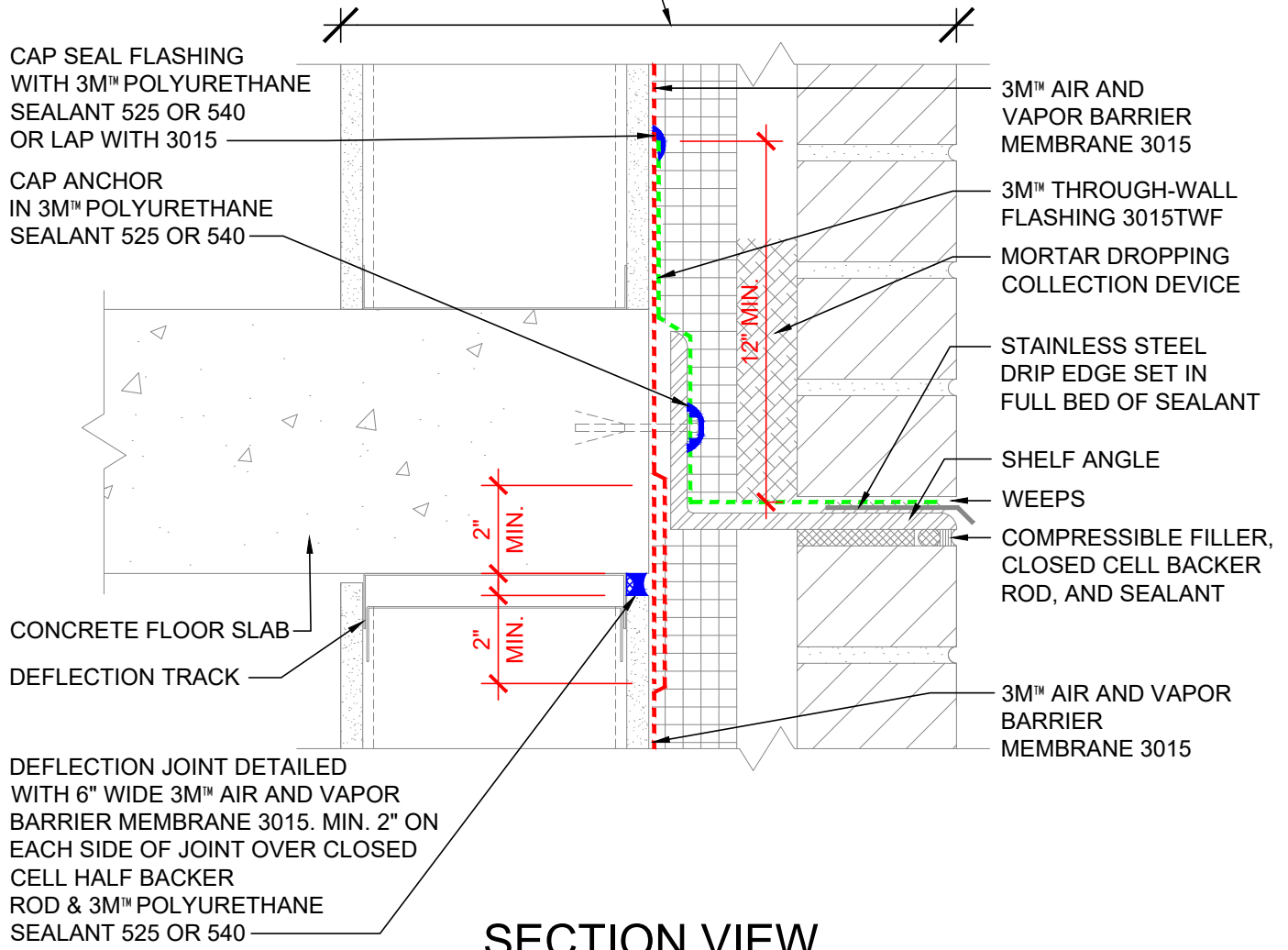


WALL DESIGN BY OTHERS CONSIST OF:

- INTERIOR SHEATHING
- STEEL/WOOD STUD
- EXTERIOR SHEATHING
- 3M™ AIR AND VAPOR BARRIER 3015
- CONTINUOUS INSULATION
- AIR SPACE
- FINISH FACADE



SECTION VIEW

NOTES:

1. LAP JOINTS AND SEAMS IN MEMBRANE SYSTEM A MINIMUM OF 2".
2. FOR NEGATIVE LAPS, SEAL TOP EDGE WITH 3M™ 525 OR 540 SEALANT.
3. FOR ALTERNATIVE DETAILING OF DEFLECTION JOINT USE 3M 525/540 SEALANT OVER CLOSED CELL BACKER ROD AND COVER WITH 1-LAYER OF 3M™ 3015TWF UNDER FIELD AREA MEMBRANE.
4. CAVITY WALL TIES NOT SHOWN. REFER TO 3M DETAIL 16.0A FOR CONDITION AT CAVITY WALL TIES.

3M™ Air and Vapor Barrier Membrane 3015



PROJECT NAME:	DATE:	DETAIL No:
SYSTEM MATERIAL: 3015, 3015TWF AND 525/540	09/03/19	3015-3.0A
TITLE: BRICK VENEER / STEEL / STUD WALL SHELF ANGLE (IN SEQUENCE - FIELD FIRST, FLASHING SECOND)	SCALE: N.T.S.	
	DRAWN BY: J.M.B. / D.N.C.	

THE DETAILS DEPICTED ABOVE ARE REPRESENTATIVE OF STANDARD CONDITIONS. MODIFICATIONS ARE REQUIRED FOR THE SPECIFIC INSTALLATIONS OF YOUR PROJECT, PLEASE CONTACT A TECHNICAL REPRESENTATIVE FOR ASSISTANCE.