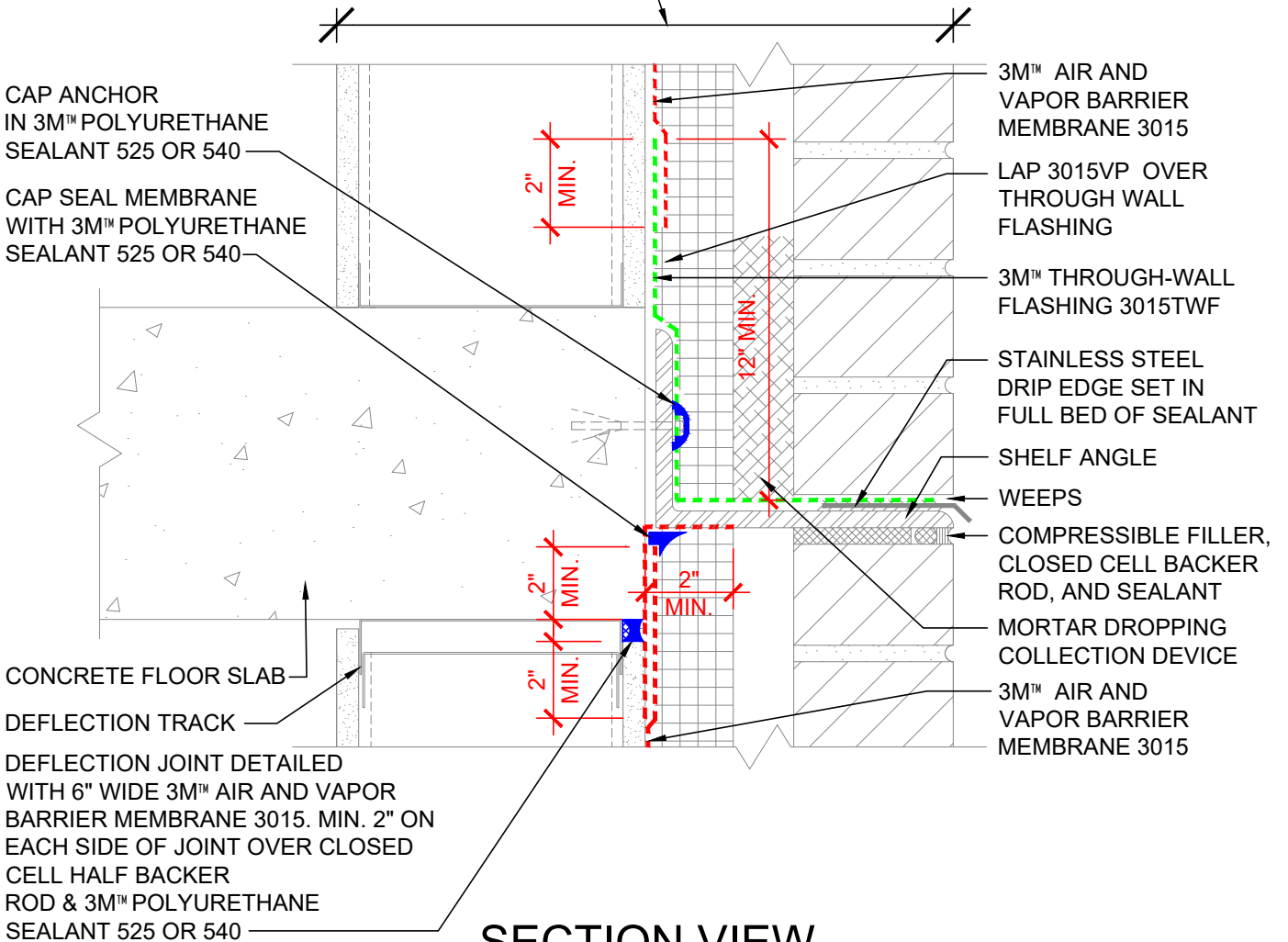


WALL DESIGN BY OTHERS CONSIST OF:

- INTERIOR SHEATHING
- STEEL/WOOD STUD
- EXTERIOR SHEATHING
- 3M™ AIR AND VAPOR BARRIER 3015
- CONTINUOUS INSULATION
- AIR SPACE
- FINISH FACADE



SECTION VIEW

NOTES:

1. LAP JOINTS AND SEAMS IN MEMBRANE SYSTEM A MINIMUM OF 2".
2. FOR NEGATIVE LAPS, SEAL TOP EDGE WITH 3M™ 525 OR 540 SEALANT.
3. FOR ALTERNATIVE DETAILING OF DEFLECTION JOINT USE 3M 525/540 SEALANT OVER CLOSED CELL BACKER ROD AND COVER WITH 1-LAYER OF 3M™ 3015TWF.
4. SEAL BUTT JOINT IN SHELF ANGLE AT FLOOR SLAB WITH 3M™ 525/540 SEALANT.
5. CAVITY WALL TIES NOT SHOWN. REFER TO 3M DETAIL 16.0A FOR CONDITION AT CAVITY WALL TIES.

3M™ Air and Vapor Barrier Membrane 3015



PROJECT NAME:	DATE:	DETAIL No:
SYSTEM MATERIAL: 3015, 3015TWF AND 525/540	09/03/19	3015-3.1A
TITLE: BRICK VENEER / STEEL / WOOD STUD WALL AT SHELF ANGLE (OUT OF SEQUENCE - FLASHING FIRST, FIELD SECOND)	SCALE:	
	N.T.S.	
	DRAWN BY:	
	J.M.B. / D.N.C.	

THE DETAILS DEPICTED ABOVE ARE REPRESENTATIVE OF STANDARD CONDITIONS. MODIFICATIONS ARE REQUIRED FOR THE SPECIFIC INSTALLATIONS OF YOUR PROJECT, PLEASE CONTACT A TECHNICAL REPRESENTATIVE FOR ASSISTANCE.