

NOTES:

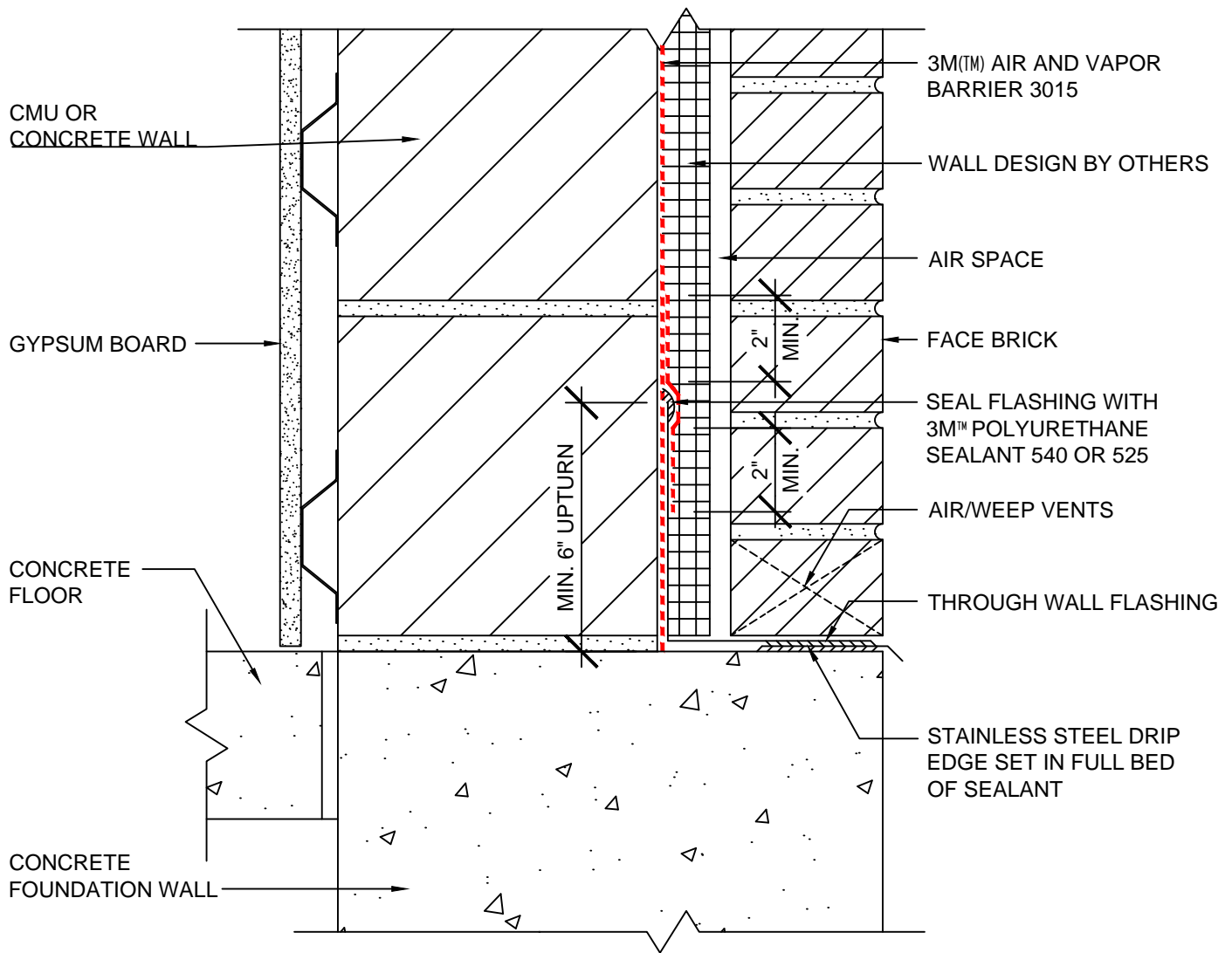
1. LAP JOINTS AND SEAMS IN MEMBRANE SYSTEM A MINIMUM OF 2"
2. DOUBLE LAYER OF MEMBRANE MAY BE APPLIED TO THROUGH WALL FLASHINGS
3. POST INSTALLATION DAMAGE TO THE MEMBRANE SHOULD BE REPAIRED WITH A PATCH PIECE OF MEMBRANE, EXTENDING AT LEAST 2" IN EACH DIRECTION OF THE DAMAGE, WITH THE LEADING EDGE SEALED WITH 3M™ POLYURETHANE SEALANT 540 OR 3M™ POLYURETHANE CONSTRUCTION SEALANT 525.

3M(TM) Air and Vapor Barrier 3015



SYSTEM: BRICK VENEER / CMU OR CONCRETE WALL	DATE: 05/16/13	DETAIL No: 3015-1.0B
	SCALE: N.T.S.	
	DRAWN BY: R.S.J.	
TITLE: FOUNDATION WALL DETAIL		

THE DETAILS DEPICTED ABOVE ARE REPRESENTATIVE OF STANDARD CONDITIONS. MODIFICATIONS ARE REQUIRED FOR THE SPECIFIC INSTALLATIONS OF YOUR PROJECT, PLEASE CONTACT A TECHNICAL REPRESENTATIVE FOR ASSISTANCE.



NOTES:

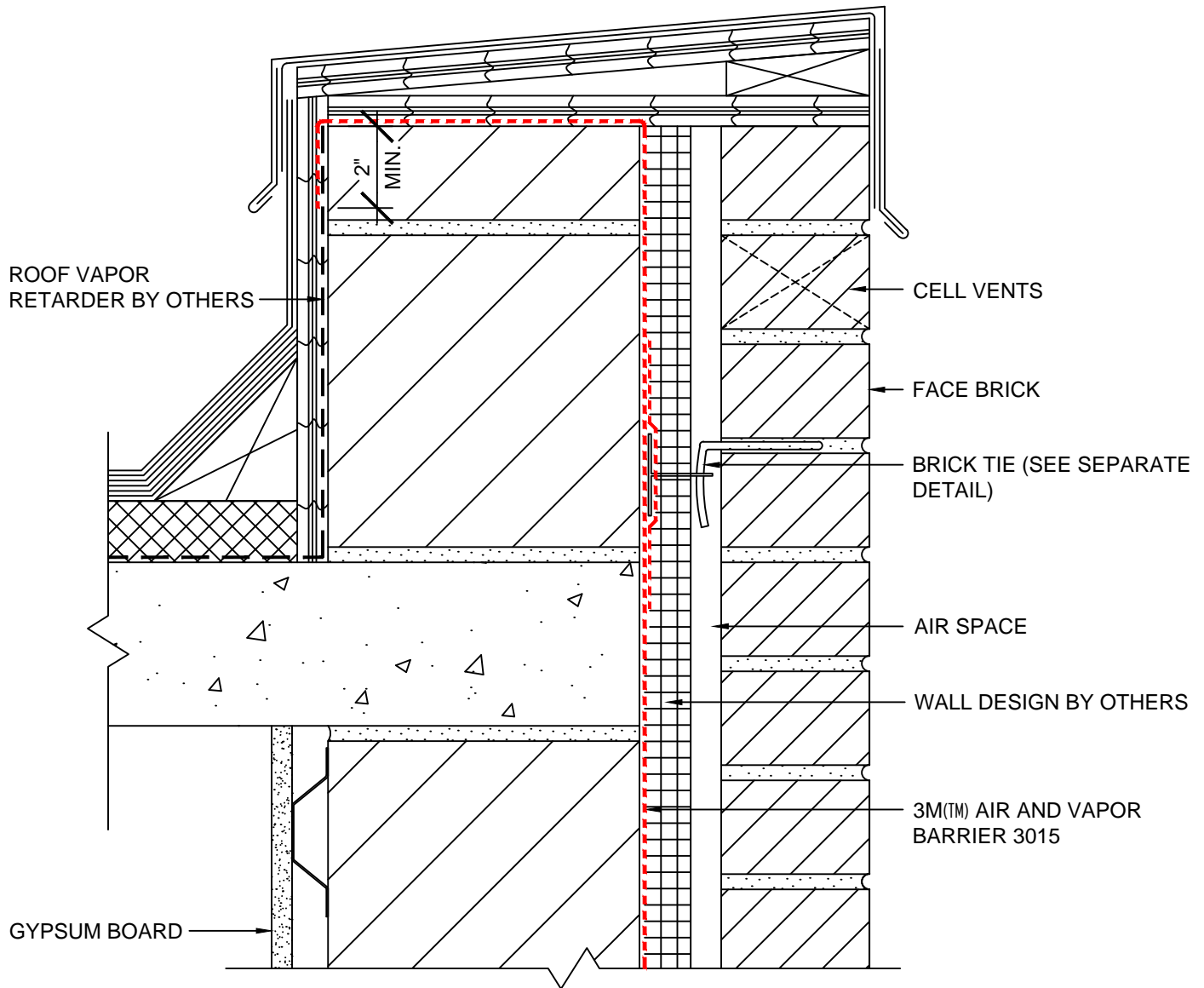
1. LAP JOINTS AND SEAMS IN MEMBRANE SYSTEM A MINIMUM OF 2"
2. DOUBLE LAYER OF MEMBRANE MAY BE APPLIED TO THROUGH WALL FLASHINGS
3. POST INSTALLATION DAMAGE TO THE MEMBRANE SHOULD BE REPAIRED WITH A PATCH PIECE OF MEMBRANE, EXTENDING AT LEAST 2" IN EACH DIRECTION OF THE DAMAGE, WITH THE LEADING EDGE SEALED WITH 3M™ POLYURETHANE SEALANT 540 OR 3M™ POLYURETHANE CONSTRUCTION SEALANT 525.

3M(TM) Air and Vapor Barrier 3015



SYSTEM: BRICK VENEER / CMU OR CONCRETE WALL	DATE: 05/16/13	DETAIL No: 3015-1.1B
	SCALE: N.T.S.	
	DRAWN BY: R.S.J.	
TITLE: FOUNDATION WALL DETAIL		

THE DETAILS DEPICTED ABOVE ARE REPRESENTATIVE OF STANDARD CONDITIONS. MODIFICATIONS ARE REQUIRED FOR THE SPECIFIC INSTALLATIONS OF YOUR PROJECT, PLEASE CONTACT A TECHNICAL REPRESENTATIVE FOR ASSISTANCE.



NOTES:

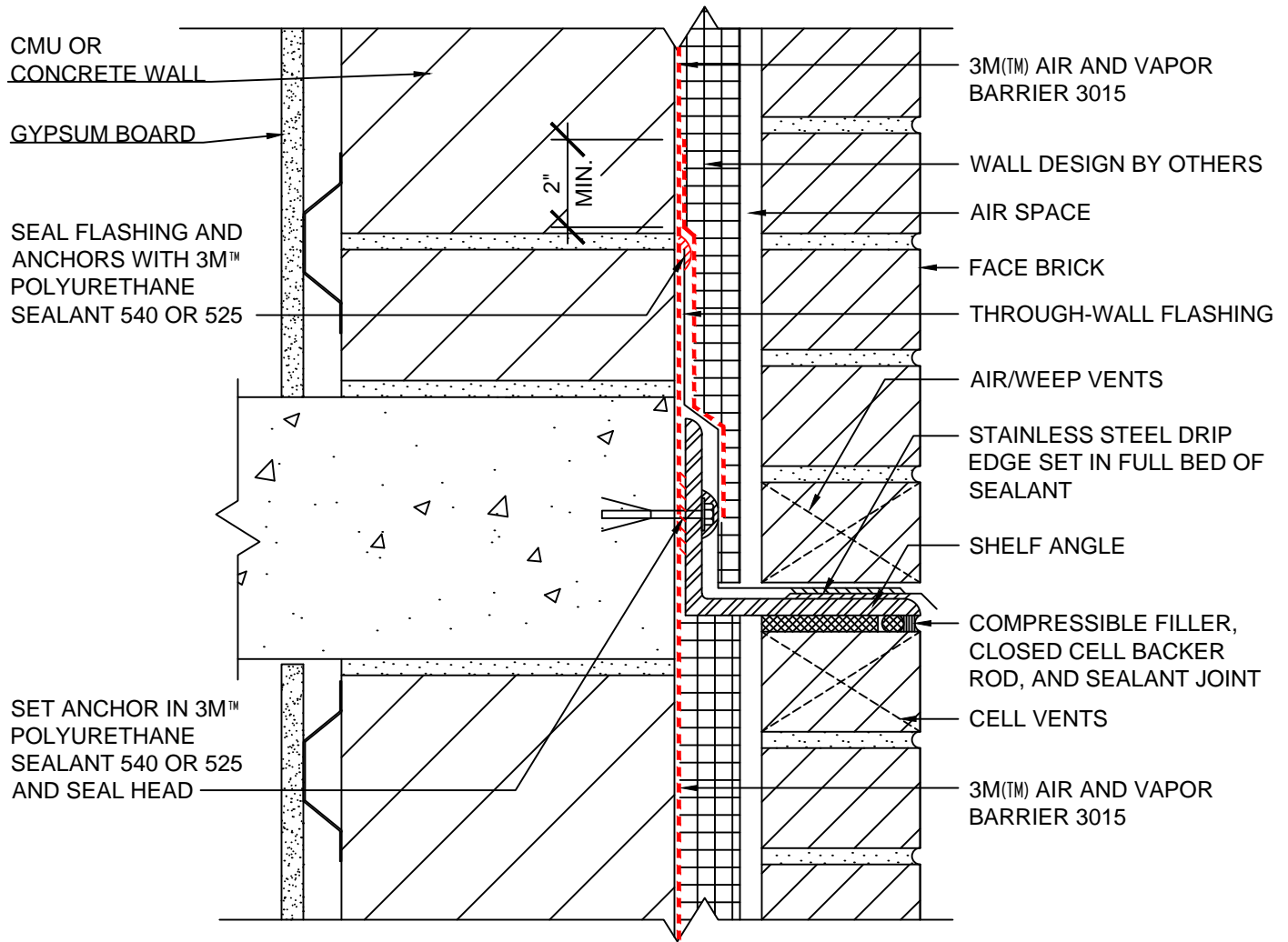
1. LAP JOINTS AND SEAMS IN MEMBRANE SYSTEM A MINIMUM OF 2"
2. DOUBLE LAYER OF MEMBRANE MAY BE APPLIED TO THROUGH WALL FLASHINGS
3. POST INSTALLATION DAMAGE TO THE MEMBRANE SHOULD BE REPAIRED WITH A PATCH PIECE OF MEMBRANE, EXTENDING AT LEAST 2" IN EACH DIRECTION OF THE DAMAGE, WITH THE LEADING EDGE SEALED WITH 3M™ POLYURETHANE SEALANT 540 OR 3M™ POLYURETHANE CONSTRUCTION SEALANT 525.

3M(TM) Air and Vapor Barrier 3015



SYSTEM: BRICK VENEER / CMU OR CONCRETE WALL	DATE: 05/16/13	DETAIL No: 3015-2.0B
	SCALE: N.T.S.	
TITLE: PARAPET DETAIL	DRAWN BY: M.D.H.	

THE DETAILS DEPICTED ABOVE ARE REPRESENTATIVE OF STANDARD CONDITIONS. MODIFICATIONS ARE REQUIRED FOR THE SPECIFIC INSTALLATIONS OF YOUR PROJECT, PLEASE CONTACT A TECHNICAL REPRESENTATIVE FOR ASSISTANCE.



NOTES:

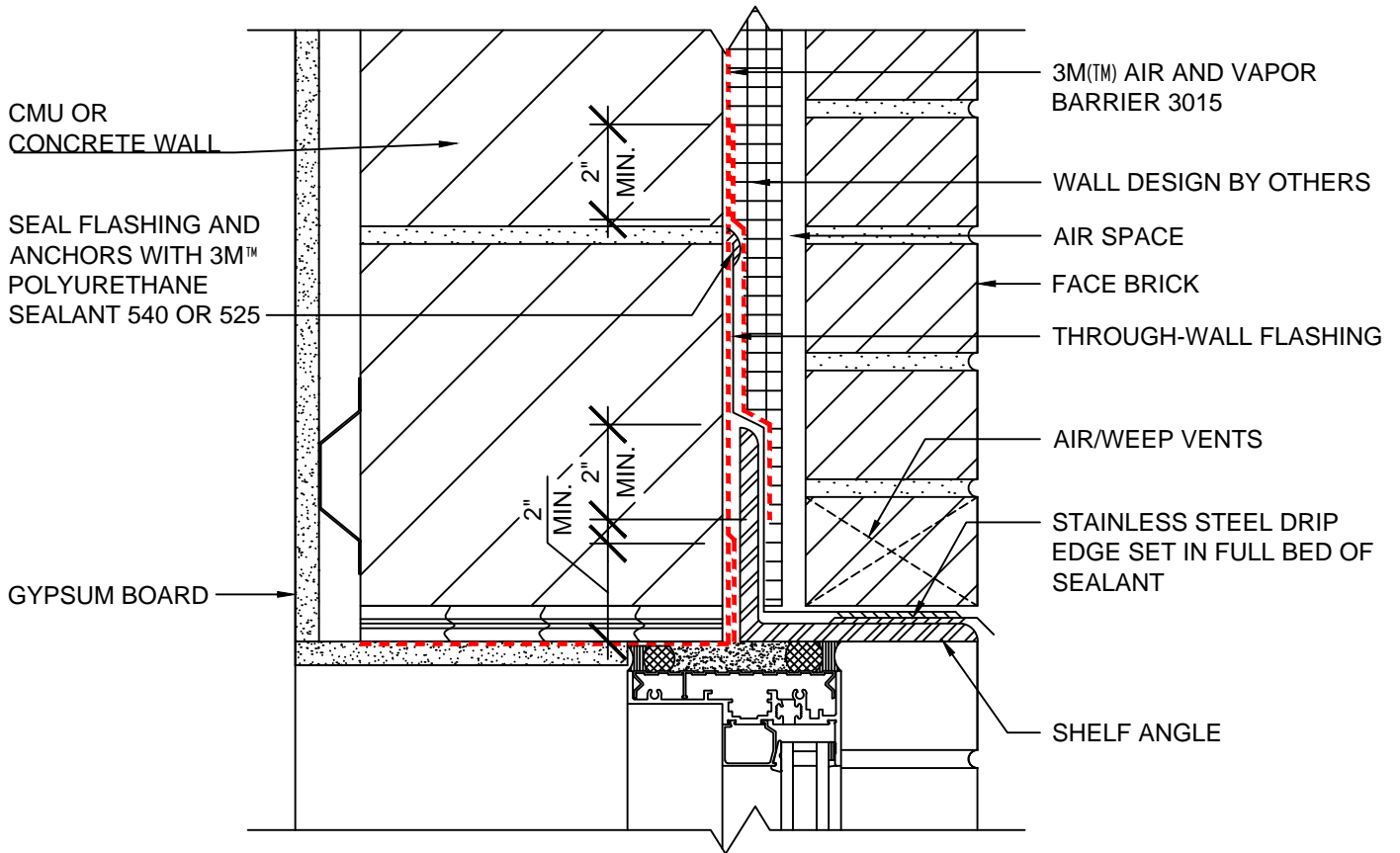
1. LAP JOINTS AND SEAMS IN MEMBRANE SYSTEM A MINIMUM OF 2"
2. DOUBLE LAYER OF MEMBRANE MAY BE APPLIED TO THROUGH WALL FLASHINGS
3. POST INSTALLATION DAMAGE TO THE MEMBRANE SHOULD BE REPAIRED WITH A PATCH PIECE OF MEMBRANE, EXTENDING AT LEAST 2" IN EACH DIRECTION OF THE DAMAGE, WITH THE LEADING EDGE SEALED WITH 3M™ POLYURETHANE SEALANT 540 OR 3M™ POLYURETHANE CONSTRUCTION SEALANT 525.

3M(TM) Air and Vapor Barrier 3015



SYSTEM: BRICK VENEER / CMU OR CONCRETE WALL	DATE: 05/16/13	DETAIL No: 3015-3.0B
	SCALE: N.T.S.	
	DRAWN BY: R.S.J.	
TITLE: BRICK SHELF ANGLE		

THE DETAILS DEPICTED ABOVE ARE REPRESENTATIVE OF STANDARD CONDITIONS. MODIFICATIONS ARE REQUIRED FOR THE SPECIFIC INSTALLATIONS OF YOUR PROJECT, PLEASE CONTACT A TECHNICAL REPRESENTATIVE FOR ASSISTANCE.



NOTES:

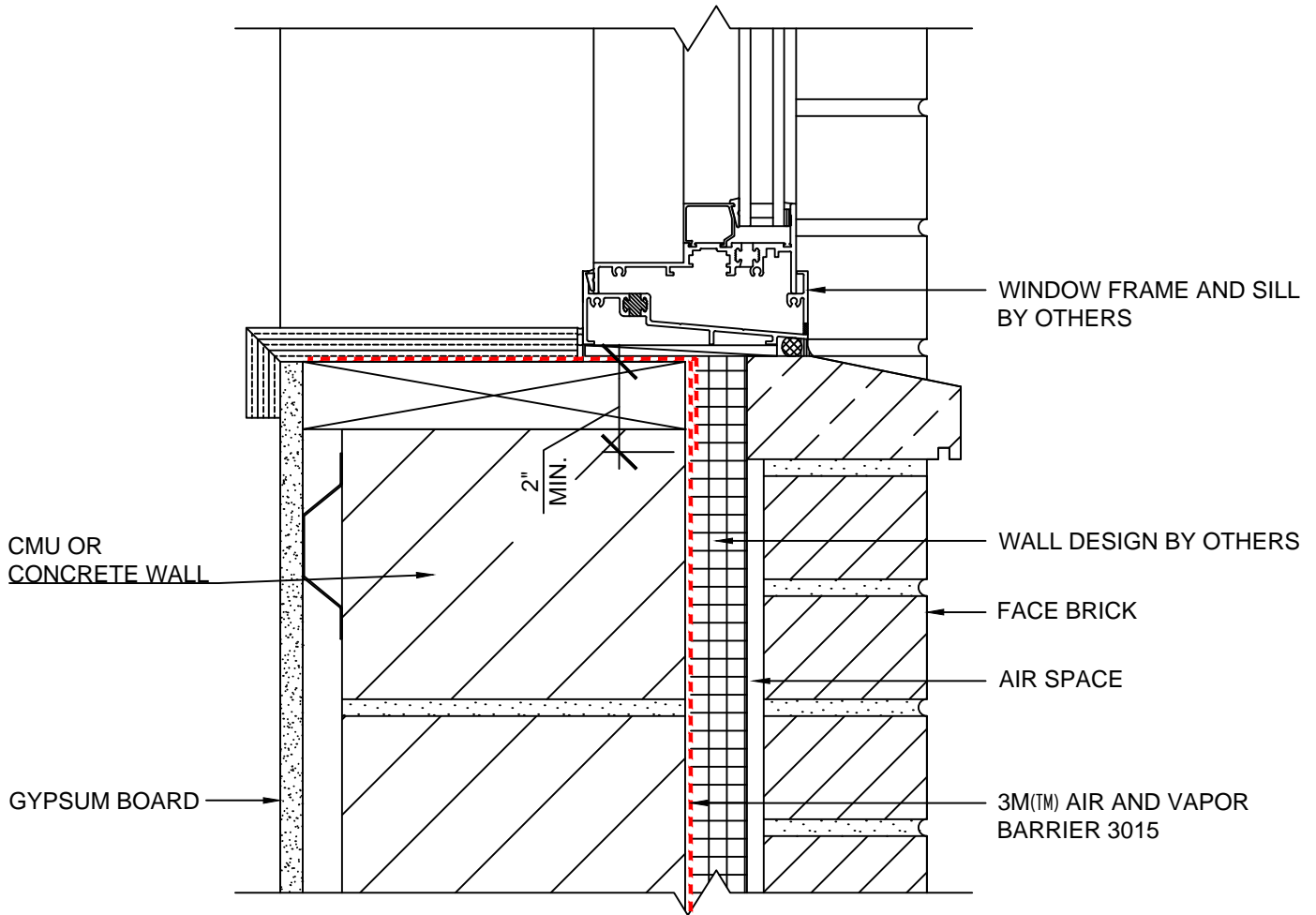
1. LAP JOINTS AND SEAMS IN MEMBRANE SYSTEM A MINIMUM OF 2"
2. DOUBLE LAYER OF MEMBRANE MAY BE APPLIED TO THROUGH WALL FLASHINGS
3. POST INSTALLATION DAMAGE TO THE MEMBRANE SHOULD BE REPAIRED WITH A PATCH PIECE OF MEMBRANE, EXTENDING AT LEAST 2" IN EACH DIRECTION OF THE DAMAGE, WITH THE LEADING EDGE SEALED WITH 3M™ POLYURETHANE SEALANT 540 OR 3M™ POLYURETHANE CONSTRUCTION SEALANT 525.
4. CONNECTION OF AIR AND VAPOR BARRIER TO WINDOW OR DOOR SYSTEM TO BE CONFIRMED WITH WINDOW OR DOOR MANUFACTURER

3M(™) Air and Vapor Barrier 3015



SYSTEM: BRICK VENEER / CMU OR CONCRETE WALL	DATE: 05/16/13	DETAIL No: 3015-4.0B
	SCALE: N.T.S.	
TITLE: WINDOW HEAD DETAIL	DRAWN BY: R.S.J.	

THE DETAILS DEPICTED ABOVE ARE REPRESENTATIVE OF STANDARD CONDITIONS. MODIFICATIONS ARE REQUIRED FOR THE SPECIFIC INSTALLATIONS OF YOUR PROJECT, PLEASE CONTACT A TECHNICAL REPRESENTATIVE FOR ASSISTANCE.



NOTES:

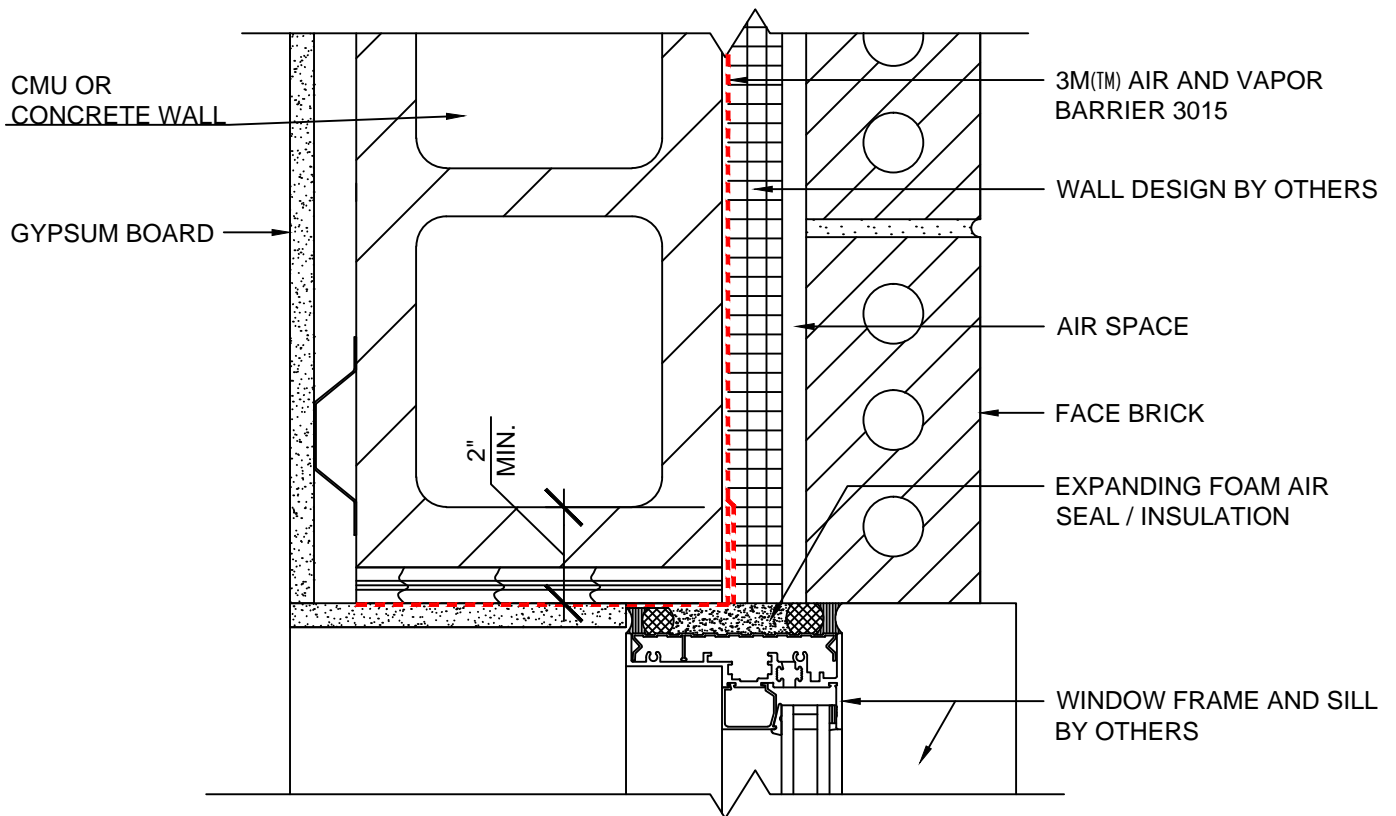
1. LAP JOINTS AND SEAMS IN MEMBRANE SYSTEM A MINIMUM OF 2"
2. CONNECTION OF AIR AND VAPOR BARRIER TO WINDOW OR DOOR SYSTEM TO BE CONFIRMED WITH WINDOW OR DOOR MANUFACTURER
3. POST INSTALLATION DAMAGE TO THE MEMBRANE SHOULD BE REPAIRED WITH A PATCH PIECE OF MEMBRANE, EXTENDING AT LEAST 2" IN EACH DIRECTION OF THE DAMAGE, WITH THE LEADING EDGE SEALED WITH 3M™ POLYURETHANE SEALANT 540 OR 3M™ POLYURETHANE CONSTRUCTION SEALANT 525.

3M(TM) Air and Vapor Barrier 3015



SYSTEM: BRICK VENEER / CMU OR CONCRETE WALL	DATE: 05/16/13	DETAIL No: 3015-5.0B
	SCALE: N.T.S.	
TITLE: WINDOW SILL DETAIL	DRAWN BY: R.S.J.	

THE DETAILS DEPICTED ABOVE ARE REPRESENTATIVE OF STANDARD CONDITIONS. MODIFICATIONS ARE REQUIRED FOR THE SPECIFIC INSTALLATIONS OF YOUR PROJECT, PLEASE CONTACT A TECHNICAL REPRESENTATIVE FOR ASSISTANCE.



NOTES:

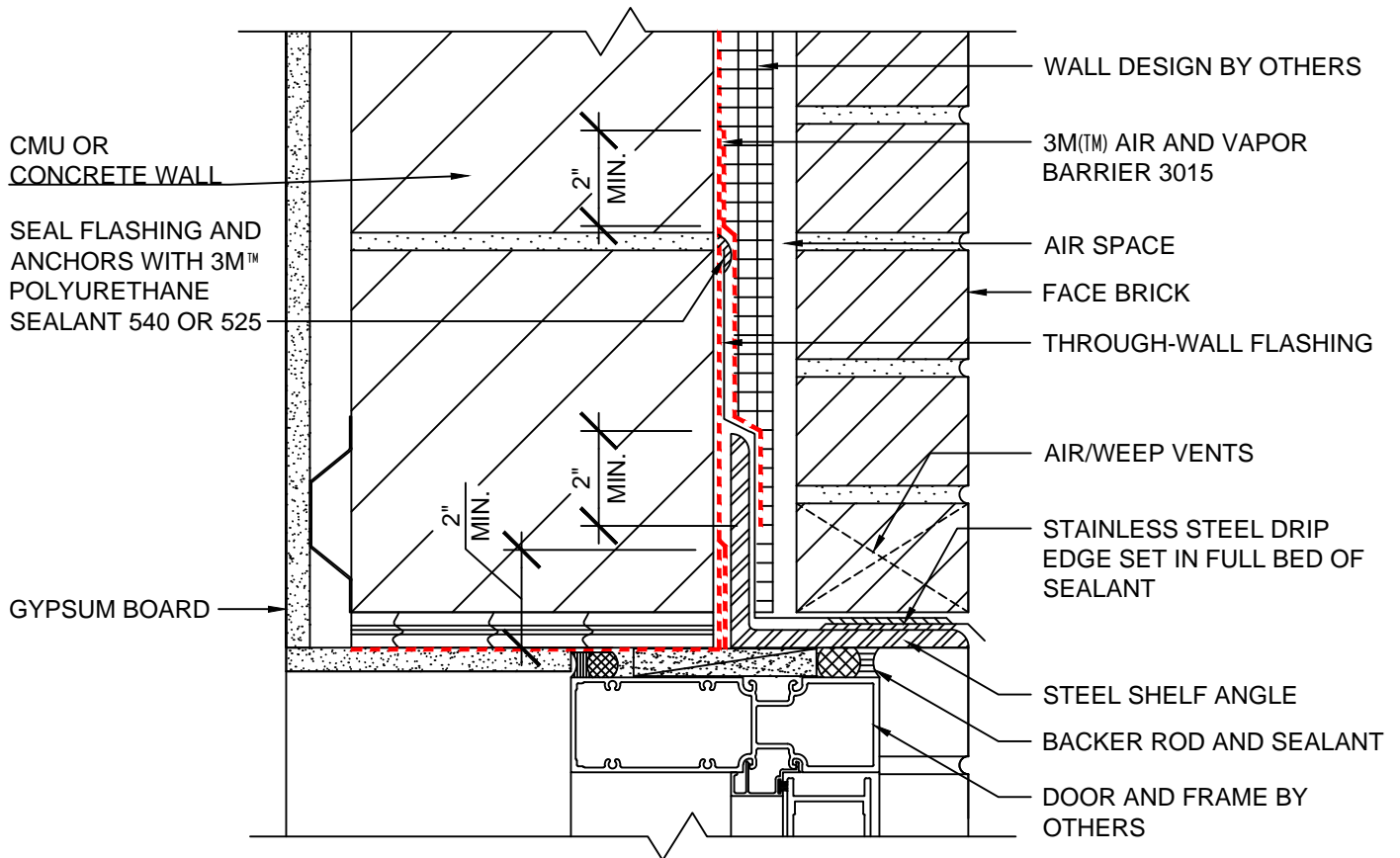
1. LAP JOINTS AND SEAMS IN MEMBRANE SYSTEM A MINIMUM OF 2"
2. CONNECTION OF AIR AND VAPOR BARRIER TO WINDOW OR DOOR SYSTEM TO BE CONFIRMED WITH WINDOW OR DOOR MANUFACTURER
3. POST INSTALLATION DAMAGE TO THE MEMBRANE SHOULD BE REPAIRED WITH A PATCH PIECE OF MEMBRANE, EXTENDING AT LEAST 2" IN EACH DIRECTION OF THE DAMAGE, WITH THE LEADING EDGE SEALED WITH 3M™ POLYURETHANE SEALANT 540 OR 3M™ POLYURETHANE CONSTRUCTION SEALANT 525.

3M(TM) Air and Vapor Barrier 3015



SYSTEM: BRICK VENEER / CMU OR CONCRETE WALL	DATE: 05/16/13	DETAIL No: 3015-6.0B
	SCALE: N.T.S.	
TITLE: WINDOW JAMB DETAIL	DRAWN BY: R.S.J.	

THE DETAILS DEPICTED ABOVE ARE REPRESENTATIVE OF STANDARD CONDITIONS. MODIFICATIONS ARE REQUIRED FOR THE SPECIFIC INSTALLATIONS OF YOUR PROJECT, PLEASE CONTACT A TECHNICAL REPRESENTATIVE FOR ASSISTANCE.



NOTES:

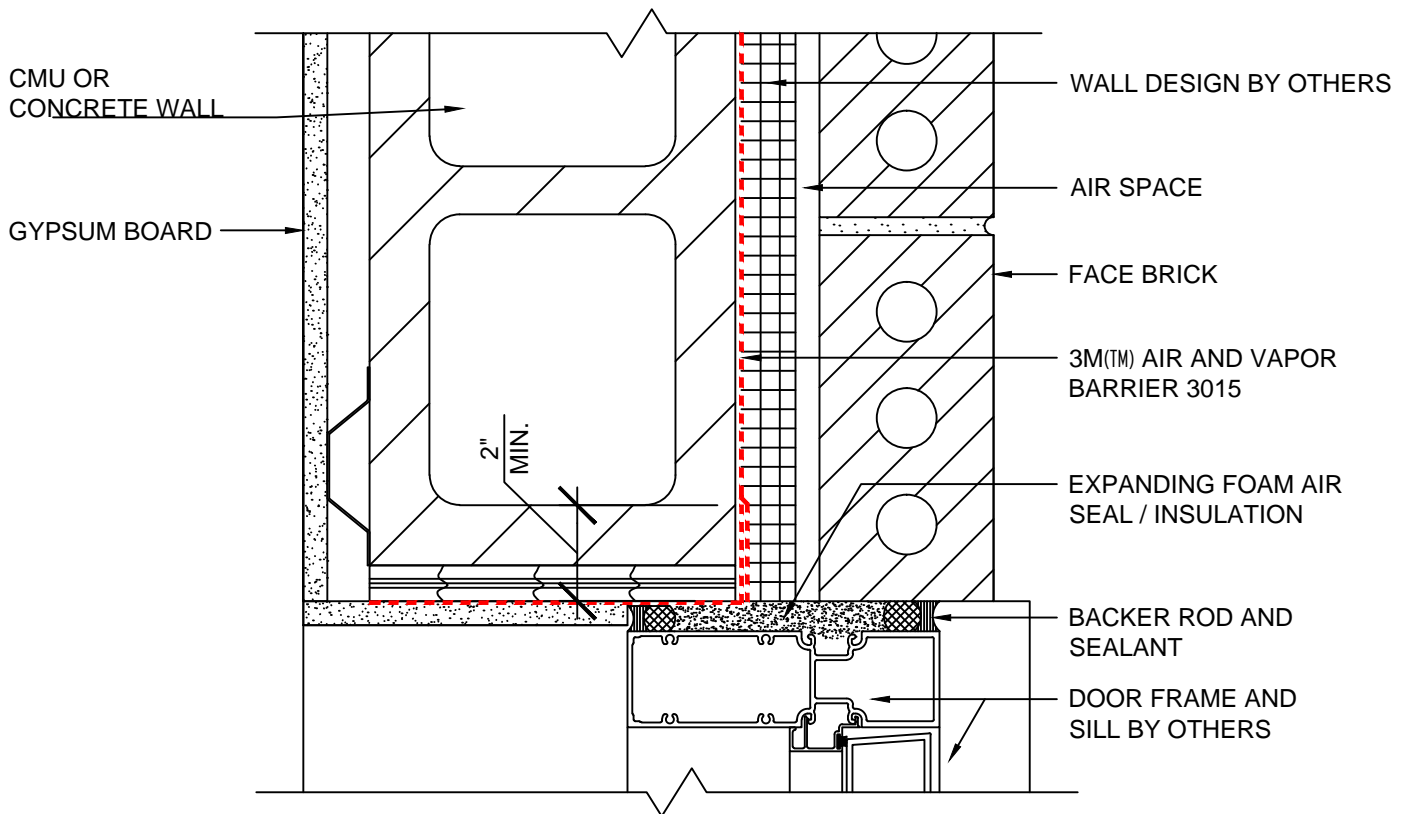
1. LAP JOINTS AND SEAMS IN MEMBRANE SYSTEM A MINIMUM OF 2"
2. DOUBLE LAYER OF MEMBRANE MAY BE APPLIED TO THROUGH WALL FLASHINGS
3. POST INSTALLATION DAMAGE TO THE MEMBRANE SHOULD BE REPAIRED WITH A PATCH PIECE OF MEMBRANE, EXTENDING AT LEAST 2" IN EACH DIRECTION OF THE DAMAGE, WITH THE LEADING EDGE SEALED WITH 3M™ POLYURETHANE SEALANT 540 OR 3M™ POLYURETHANE CONSTRUCTION SEALANT 525.
4. CONNECTION OF AIR AND VAPOR BARRIER TO WINDOW OR DOOR SYSTEM TO BE CONFIRMED WITH WINDOW OR DOOR MANUFACTURER

3M(TM) Air and Vapor Barrier 3015



SYSTEM: BRICK VENEER / CMU OR CONCRETE WALL	DATE: 05/16/13	DETAIL No: 3015-7.0B
	SCALE: N.T.S.	
	DRAWN BY: R.S.J.	
TITLE: DOOR HEAD DETAIL		

THE DETAILS DEPICTED ABOVE ARE REPRESENTATIVE OF STANDARD CONDITIONS. MODIFICATIONS ARE REQUIRED FOR THE SPECIFIC INSTALLATIONS OF YOUR PROJECT, PLEASE CONTACT A TECHNICAL REPRESENTATIVE FOR ASSISTANCE.



NOTES:

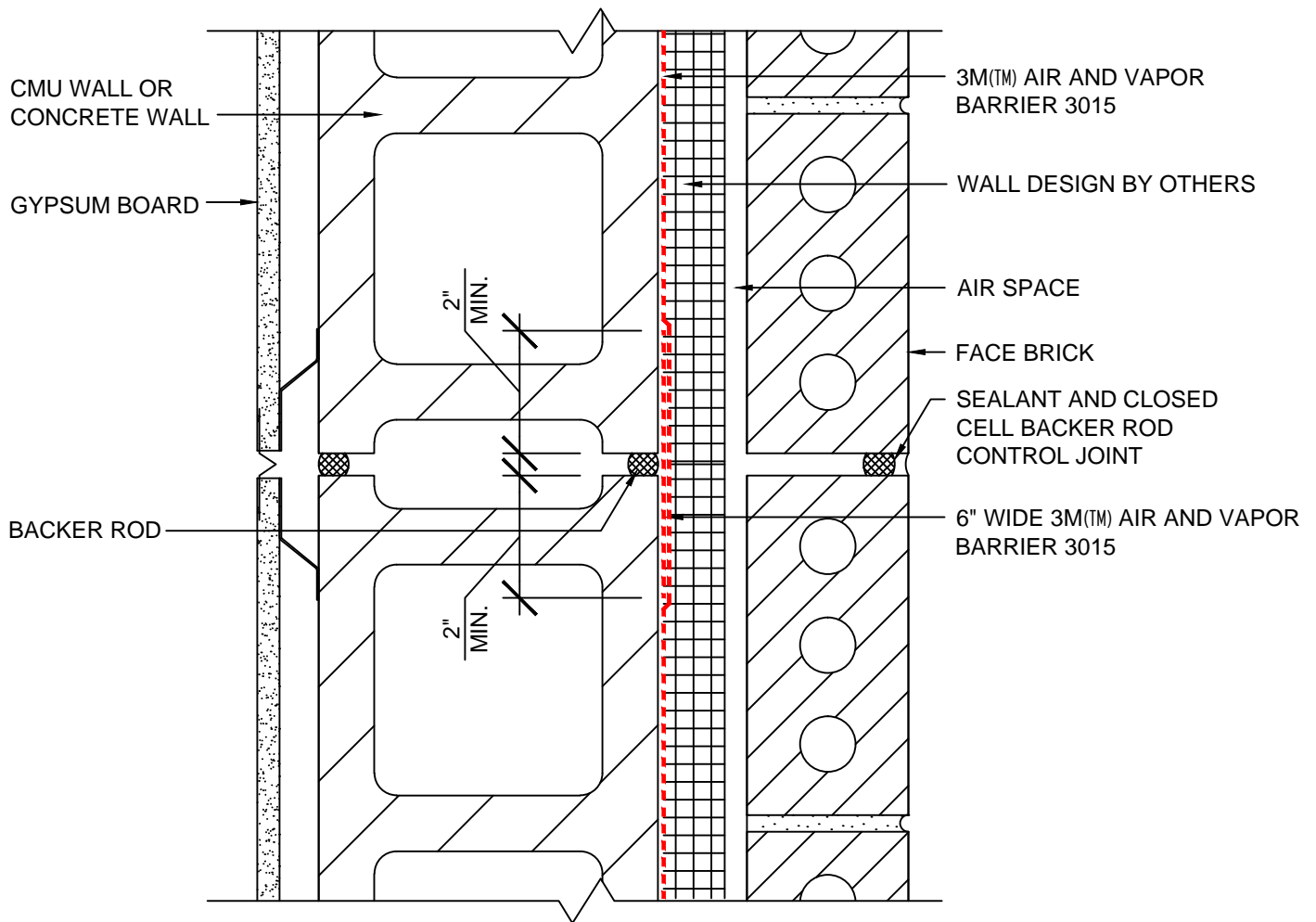
1. LAP JOINTS AND SEAMS IN MEMBRANE SYSTEM A MINIMUM OF 2"
2. CONNECTION OF AIR AND VAPOR BARRIER TO WINDOW OR DOOR SYSTEM TO BE CONFIRMED WITH WINDOW OR DOOR MANUFACTURER
3. POST INSTALLATION DAMAGE TO THE MEMBRANE SHOULD BE REPAIRED WITH A PATCH PIECE OF MEMBRANE, EXTENDING AT LEAST 2" IN EACH DIRECTION OF THE DAMAGE, WITH THE LEADING EDGE SEALED WITH 3M™ POLYURETHANE SEALANT 540 OR 3M™ POLYURETHANE CONSTRUCTION SEALANT 525.

3M(TM) Air and Vapor Barrier 3015



SYSTEM: BRICK VENEER / CMU OR CONCRETE WALL	DATE: 05/16/13	DETAIL No: 3015-8.0B
	SCALE: N.T.S.	
TITLE: DOOR JAMB DETAIL	DRAWN BY: R.S.J.	

THE DETAILS DEPICTED ABOVE ARE REPRESENTATIVE OF STANDARD CONDITIONS. MODIFICATIONS ARE REQUIRED FOR THE SPECIFIC INSTALLATIONS OF YOUR PROJECT, PLEASE CONTACT A TECHNICAL REPRESENTATIVE FOR ASSISTANCE.



NOTES:

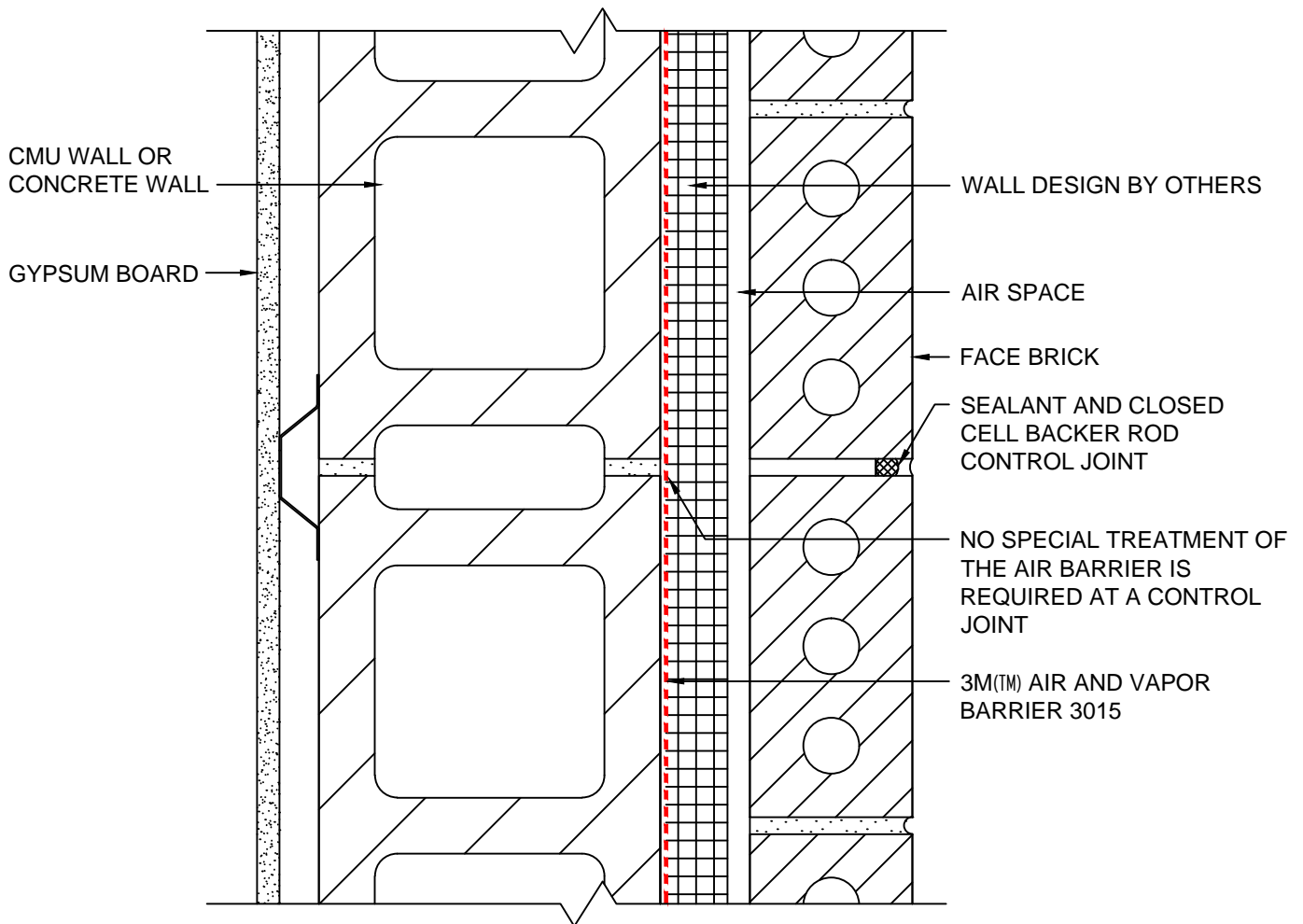
1. LAP JOINTS AND SEAMS IN MEMBRANE SYSTEM A MINIMUM OF 2"
2. POST INSTALLATION DAMAGE TO THE MEMBRANE SHOULD BE REPAIRED WITH A PATCH PIECE OF MEMBRANE, EXTENDING AT LEAST 2" IN EACH DIRECTION OF THE DAMAGE, WITH THE LEADING EDGE SEALED WITH 3M™ POLYURETHANE SEALANT 540 OR 3M™ POLYURETHANE CONSTRUCTION SEALANT 525.

3M(TM) Air and Vapor Barrier 3015



SYSTEM: BRICK VENEER / CMU OR CONCRETE WALL	DATE: 05/16/13	DETAIL No: 3015-9.0B
	SCALE: N.T.S.	
TITLE: EXPANSION JOINT DETAIL	DRAWN BY: M.D.H.	

THE DETAILS DEPICTED ABOVE ARE REPRESENTATIVE OF STANDARD CONDITIONS. MODIFICATIONS ARE REQUIRED FOR THE SPECIFIC INSTALLATIONS OF YOUR PROJECT, PLEASE CONTACT A TECHNICAL REPRESENTATIVE FOR ASSISTANCE.



NOTES:

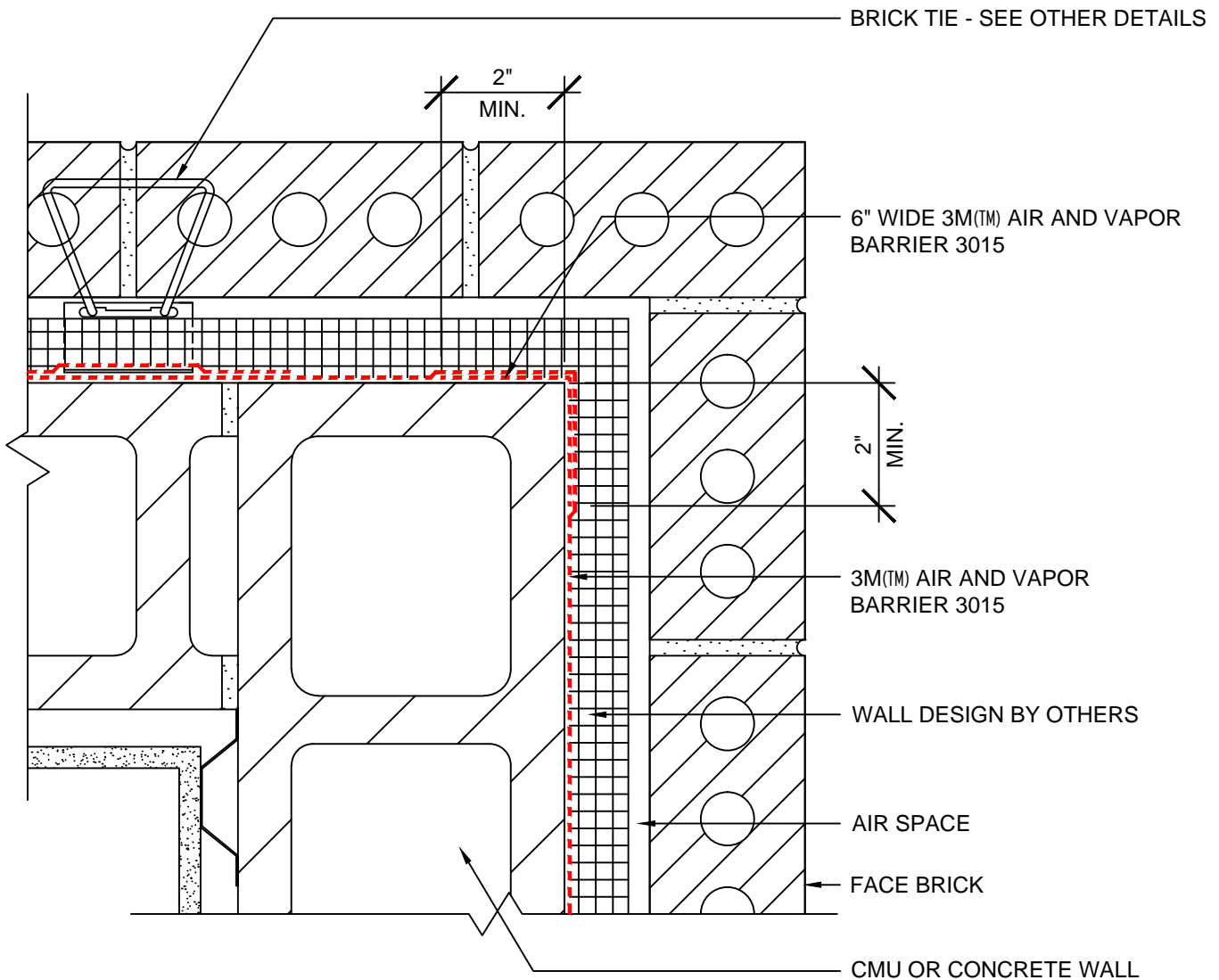
1. LAP JOINTS AND SEAMS IN MEMBRANE SYSTEM A MINIMUM OF 2"
2. POST INSTALLATION DAMAGE TO THE MEMBRANE SHOULD BE REPAIRED WITH A PATCH PIECE OF MEMBRANE, EXTENDING AT LEAST 2" IN EACH DIRECTION OF THE DAMAGE, WITH THE LEADING EDGE SEALED WITH 3M™ POLYURETHANE SEALANT 540 OR 3M™ POLYURETHANE CONSTRUCTION SEALANT 525.

3M(TM) Air and Vapor Barrier 3015



SYSTEM: BRICK VENEER / CMU OR CONCRETE WALL	DATE: 05/16/13	DETAIL No: 3015-10.0B
	SCALE: N.T.S.	
	DRAWN BY: M.D.H.	
TITLE: CONTROL JOINT DETAIL		

THE DETAILS DEPICTED ABOVE ARE REPRESENTATIVE OF STANDARD CONDITIONS. MODIFICATIONS ARE REQUIRED FOR THE SPECIFIC INSTALLATIONS OF YOUR PROJECT, PLEASE CONTACT A TECHNICAL REPRESENTATIVE FOR ASSISTANCE.



NOTES:

1. LAP JOINTS AND SEAMS IN MEMBRANE SYSTEM A MINIMUM OF 2"
2. POST INSTALLATION DAMAGE TO THE MEMBRANE SHOULD BE REPAIRED WITH A PATCH PIECE OF MEMBRANE, EXTENDING AT LEAST 2" IN EACH DIRECTION OF THE DAMAGE, WITH THE LEADING EDGE SEALED WITH 3M™ POLYURETHANE SEALANT 540 OR 3M™ POLYURETHANE CONSTRUCTION SEALANT 525.

3M(TM) Air and Vapor Barrier 3015



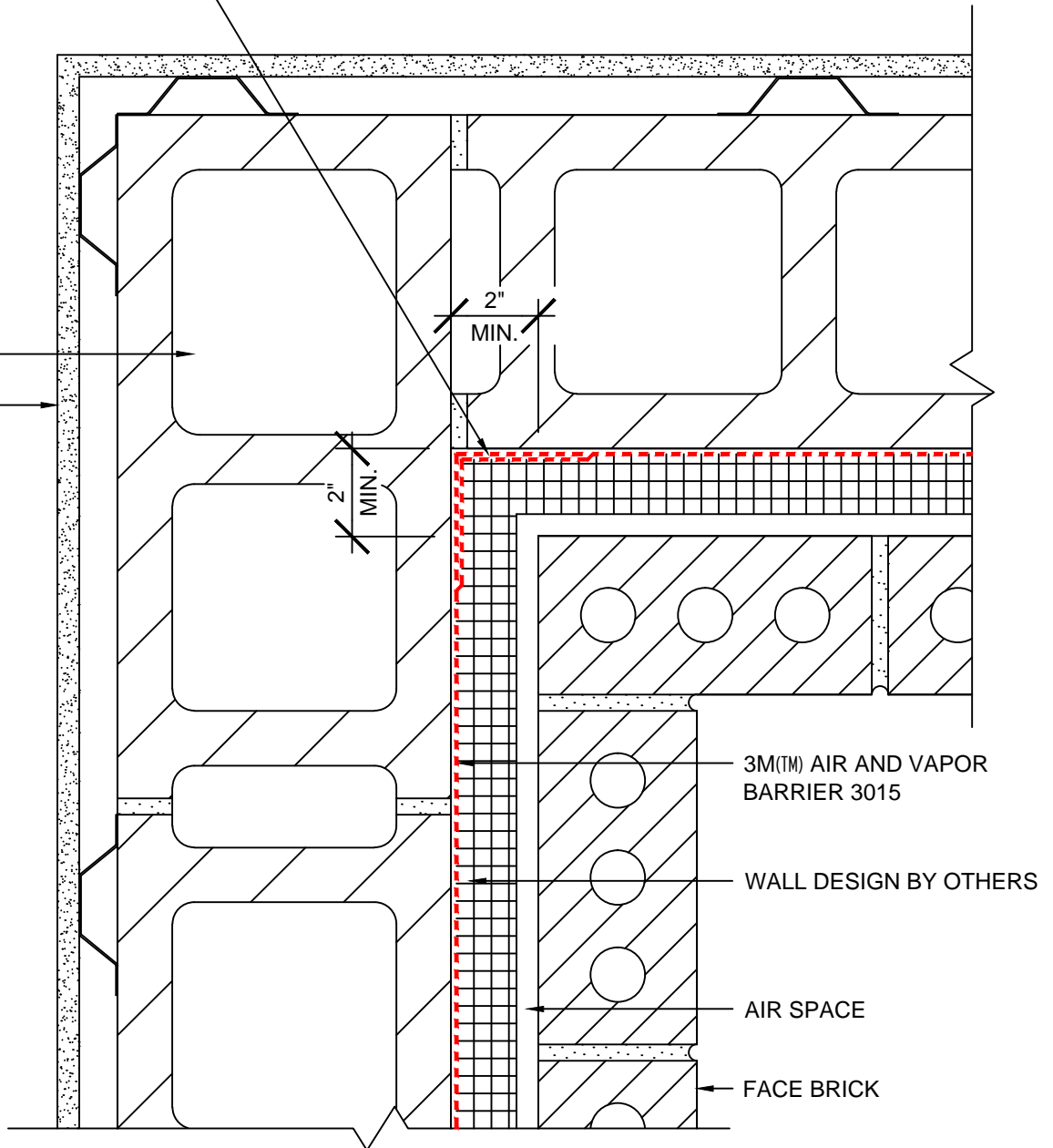
SYSTEM: BRICK VENEER / CMU OR CONCRETE WALL	DATE: 05/16/13	DETAIL No: 3015-11.0B
	SCALE: N.T.S.	
	DRAWN BY: M.D.H.	
TITLE: EXTERIOR CORNER DETAIL		

THE DETAILS DEPICTED ABOVE ARE REPRESENTATIVE OF STANDARD CONDITIONS. MODIFICATIONS ARE REQUIRED FOR THE SPECIFIC INSTALLATIONS OF YOUR PROJECT, PLEASE CONTACT A TECHNICAL REPRESENTATIVE FOR ASSISTANCE.

6" WIDE 3M(TM) AIR AND VAPOR BARRIER 3015

CMU WALL

GYPSUM BOARD



NOTES:

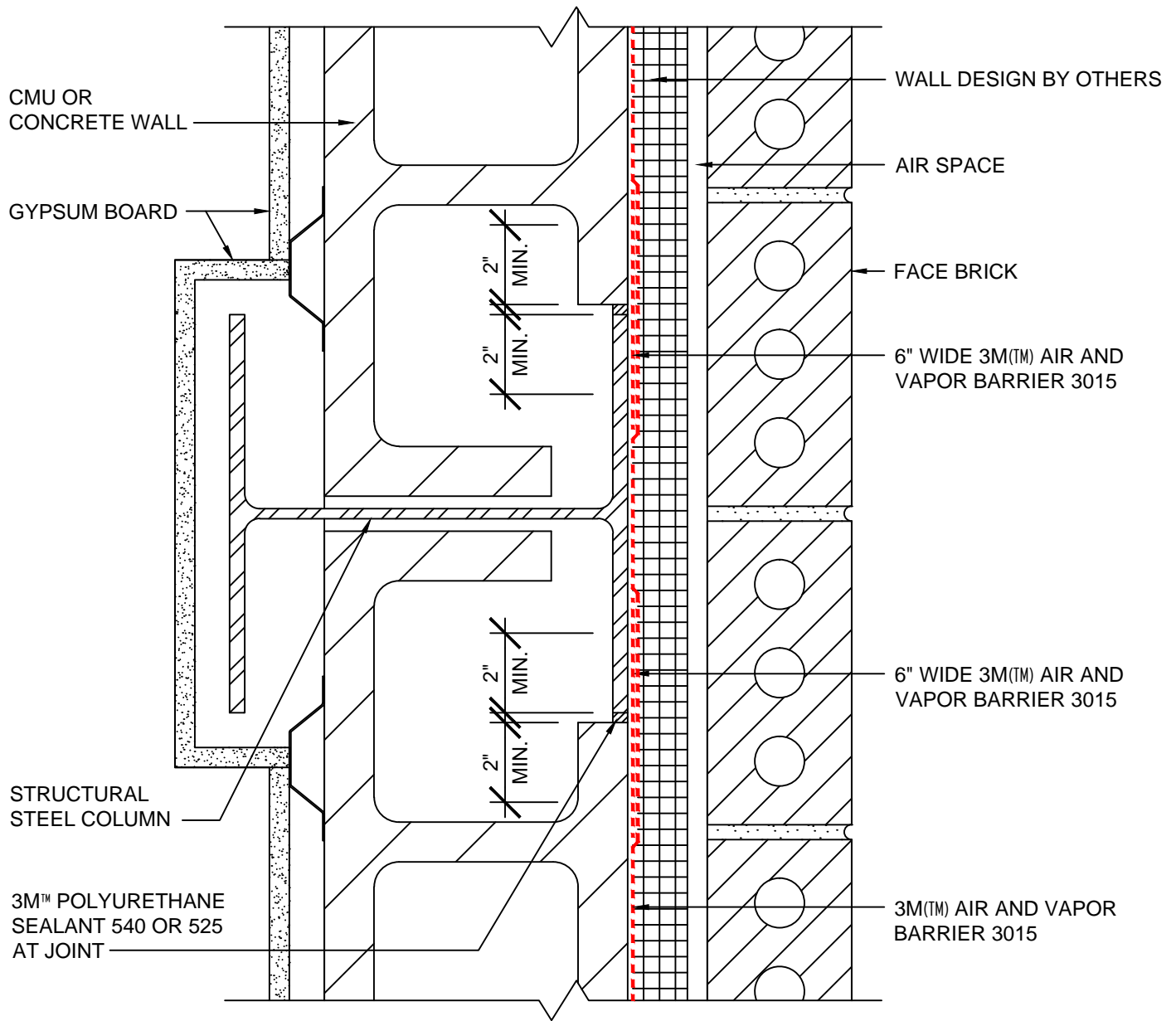
1. LAP JOINTS AND SEAMS IN MEMBRANE SYSTEM A MINIMUM OF 2"
2. POST INSTALLATION DAMAGE TO THE MEMBRANE SHOULD BE REPAIRED WITH A PATCH PIECE OF MEMBRANE, EXTENDING AT LEAST 2" IN EACH DIRECTION OF THE DAMAGE, WITH THE LEADING EDGE SEALED WITH 3M™ POLYURETHANE SEALANT 540 OR 3M™ POLYURETHANE CONSTRUCTION SEALANT 525.

3M(TM) Air and Vapor Barrier 3015



SYSTEM: BRICK VENEER / CMU OR CONCRETE WALL	DATE: 05/16/13	DETAIL No: 3015-12.0B
	SCALE: N.T.S.	
TITLE: INTERIOR CORNER DETAIL	DRAWN BY: M.D.H.	

THE DETAILS DEPICTED ABOVE ARE REPRESENTATIVE OF STANDARD CONDITIONS. MODIFICATIONS ARE REQUIRED FOR THE SPECIFIC INSTALLATIONS OF YOUR PROJECT, PLEASE CONTACT A TECHNICAL REPRESENTATIVE FOR ASSISTANCE.



NOTES:

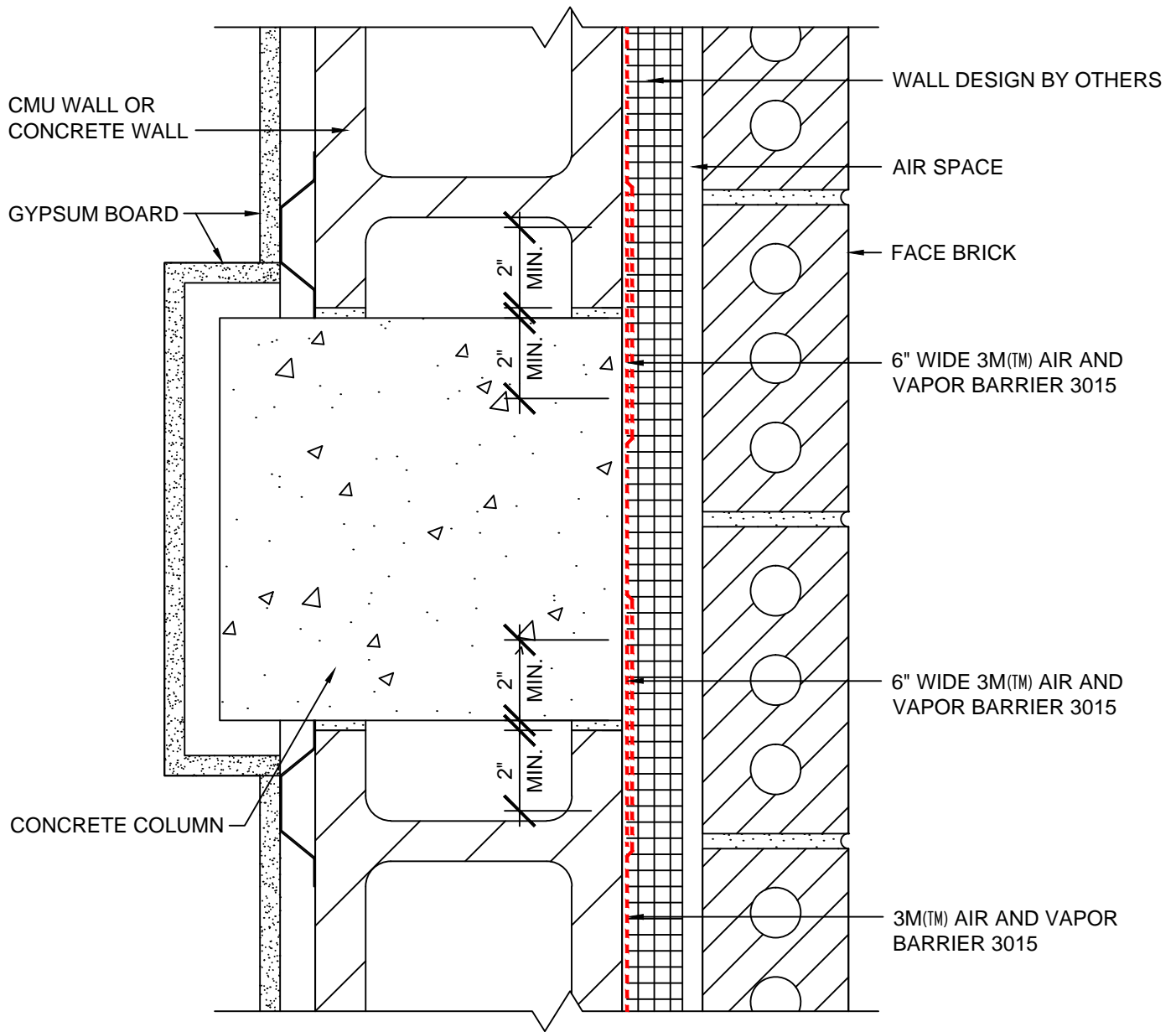
1. LAP JOINTS AND SEAMS IN MEMBRANE SYSTEM A MINIMUM OF 2"
2. POST INSTALLATION DAMAGE TO THE MEMBRANE SHOULD BE REPAIRED WITH A PATCH PIECE OF MEMBRANE, EXTENDING AT LEAST 2" IN EACH DIRECTION OF THE DAMAGE, WITH THE LEADING EDGE SEALED WITH 3M™ POLYURETHANE SEALANT 540 OR 3M™ POLYURETHANE CONSTRUCTION SEALANT 525.

3M(™) Air and Vapor Barrier 3015



SYSTEM: BRICK VENEER / CMU OR CONCRETE WALL	DATE: 05/16/13	DETAIL No: 3015-13.0B
	SCALE: N.T.S.	
	DRAWN BY: M.D.H.	
TITLE: STEEL COLUMN CONNECTION DETAIL		

THE DETAILS DEPICTED ABOVE ARE REPRESENTATIVE OF STANDARD CONDITIONS. MODIFICATIONS ARE REQUIRED FOR THE SPECIFIC INSTALLATIONS OF YOUR PROJECT, PLEASE CONTACT A TECHNICAL REPRESENTATIVE FOR ASSISTANCE.



NOTES:

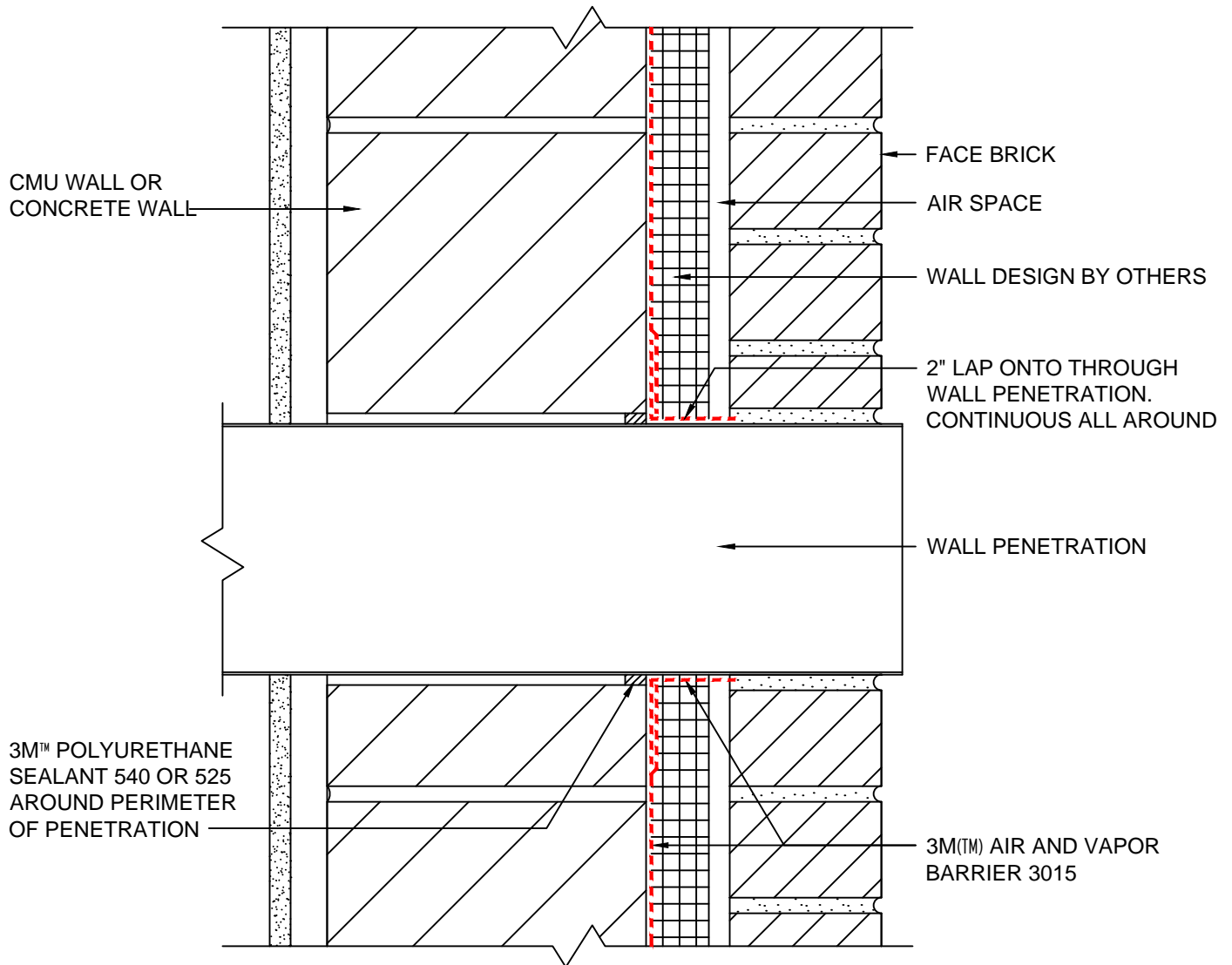
1. LAP JOINTS AND SEAMS IN MEMBRANE SYSTEM A MINIMUM OF 2"
2. POST INSTALLATION DAMAGE TO THE MEMBRANE SHOULD BE REPAIRED WITH A PATCH PIECE OF MEMBRANE, EXTENDING AT LEAST 2" IN EACH DIRECTION OF THE DAMAGE, WITH THE LEADING EDGE SEALED WITH 3M™ POLYURETHANE SEALANT 540 OR 3M™ POLYURETHANE CONSTRUCTION SEALANT 525.

3M(TM) Air and Vapor Barrier 3015



SYSTEM: BRICK VENEER / CMU OR CONCRETE WALL TITLE: CONCRETE COLUMN CONNECTION DETAIL	DATE: 05/16/13	DETAIL No: 3015-14.0B
	SCALE: N.T.S.	
	DRAWN BY: M.D.H.	

THE DETAILS DEPICTED ABOVE ARE REPRESENTATIVE OF STANDARD CONDITIONS. MODIFICATIONS ARE REQUIRED FOR THE SPECIFIC INSTALLATIONS OF YOUR PROJECT, PLEASE CONTACT A TECHNICAL REPRESENTATIVE FOR ASSISTANCE.



NOTES:

1. LAP JOINTS AND SEAMS IN MEMBRANE SYSTEM A MINIMUM OF 2"
2. POST INSTALLATION DAMAGE TO THE MEMBRANE SHOULD BE REPAIRED WITH A PATCH PIECE OF MEMBRANE, EXTENDING AT LEAST 2" IN EACH DIRECTION OF THE DAMAGE, WITH THE LEADING EDGE SEALED WITH 3M™ POLYURETHANE SEALANT 540 OR 3M™ POLYURETHANE CONSTRUCTION SEALANT 525.

3M(TM) Air and Vapor Barrier 3015



SYSTEM: BRICK VENEER / CMU OR CONCRETE WALL	DATE: 05/16/13	DETAIL No: 3015-15.0B
	SCALE: N.T.S.	
	DRAWN BY: M.D.H.	
TITLE: THROUGH WALL PIPE OR DUCT PENETRATION		

THE DETAILS DEPICTED ABOVE ARE REPRESENTATIVE OF STANDARD CONDITIONS. MODIFICATIONS ARE REQUIRED FOR THE SPECIFIC INSTALLATIONS OF YOUR PROJECT, PLEASE CONTACT A TECHNICAL REPRESENTATIVE FOR ASSISTANCE.