

NOTES:

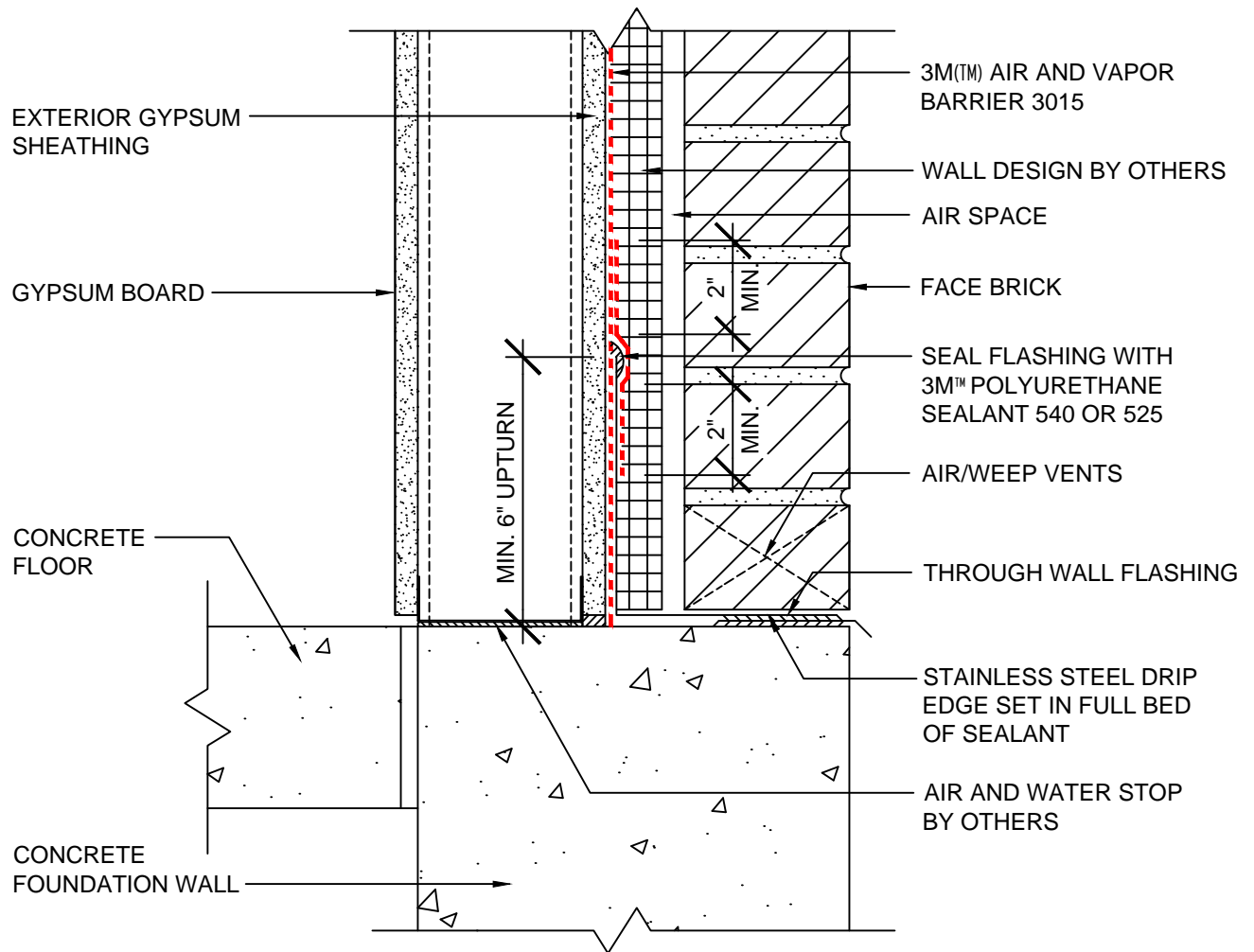
1. LAP JOINTS AND SEAMS IN MEMBRANE SYSTEM A MINIMUM OF 2"
2. DOUBLE LAYER OF MEMBRANE MAY BE APPLIED TO THROUGH WALL FLASHINGS
3. POST INSTALLATION DAMAGE TO THE MEMBRANE SHOULD BE REPAIRED WITH A PATCH PIECE OF MEMBRANE, EXTENDING AT LEAST 2" IN EACH DIRECTION OF THE DAMAGE, WITH THE LEADING EDGE SEALED WITH 3M™ POLYURETHANE SEALANT 540 OR 3M™ POLYURETHANE CONSTRUCTION SEALANT 525.

3M (TM) Air and Vapor Barrier 3015



SYSTEM: BRICK VENEER / STEEL STUD WALL	DATE: 05/24/13	DETAIL No: 3015-1.0A
	SCALE: N.T.S.	
	DRAWN BY: R.S.J.	
TITLE: FOUNDATION WALL DETAIL		

THE DETAILS DEPICTED ABOVE ARE REPRESENTATIVE OF STANDARD CONDITIONS. MODIFICATIONS ARE REQUIRED FOR THE SPECIFIC INSTALLATIONS OF YOUR PROJECT, PLEASE CONTACT A TECHNICAL REPRESENTATIVE FOR ASSISTANCE.



NOTES:

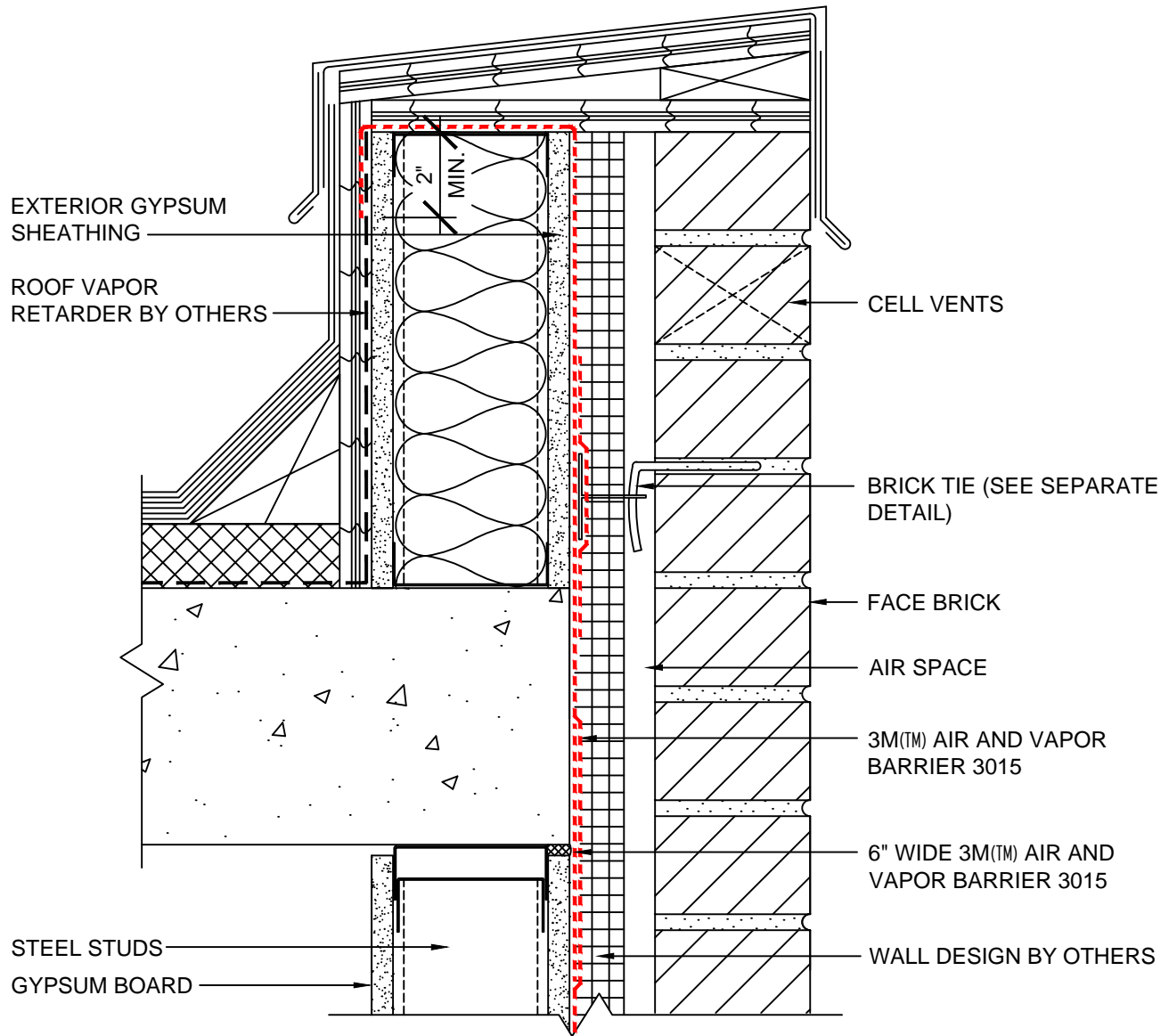
1. LAP JOINTS AND SEAMS IN MEMBRANE SYSTEM A MINIMUM OF 2"
2. DOUBLE LAYER OF MEMBRANE MAY BE APPLIED TO THROUGH WALL FLASHINGS
3. POST INSTALLATION DAMAGE TO THE MEMBRANE SHOULD BE REPAIRED WITH A PATCH PIECE OF MEMBRANE, EXTENDING AT LEAST 2" IN EACH DIRECTION OF THE DAMAGE, WITH THE LEADING EDGE SEALED WITH 3M™ POLYURETHANE SEALANT 540 OR 3M™ POLYURETHANE CONSTRUCTION SEALANT 525.

3M(TM) Air and Vapor Barrier 3015



SYSTEM: BRICK VENEER / STEEL STUD WALL	DATE: 05/24/13	DETAIL No: 3015-1.1A
	SCALE: N.T.S.	
	DRAWN BY: R.S.J.	
TITLE: FOUNDATION WALL DETAIL		

THE DETAILS DEPICTED ABOVE ARE REPRESENTATIVE OF STANDARD CONDITIONS. MODIFICATIONS ARE REQUIRED FOR THE SPECIFIC INSTALLATIONS OF YOUR PROJECT, PLEASE CONTACT A TECHNICAL REPRESENTATIVE FOR ASSISTANCE.



NOTES:

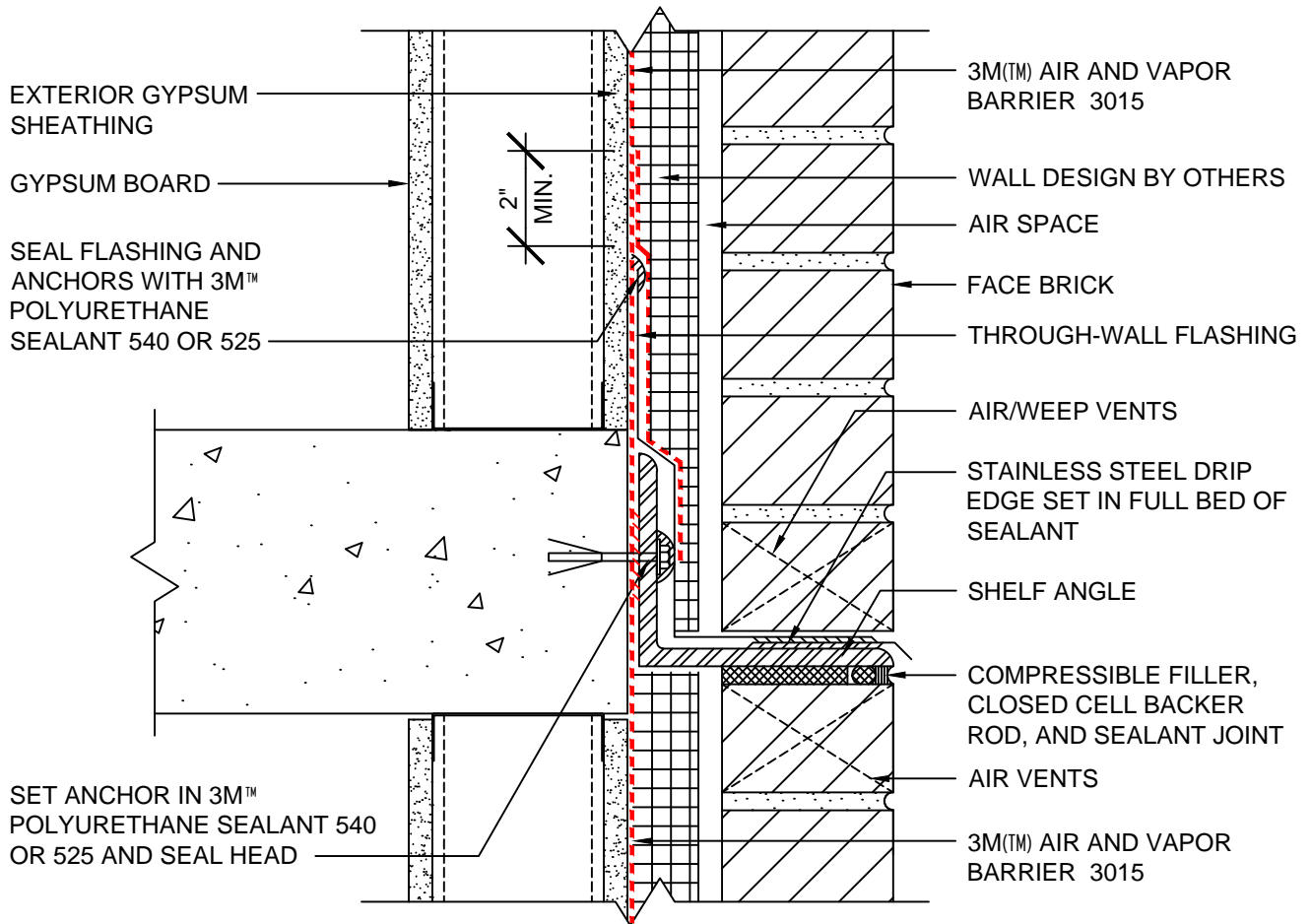
1. LAP JOINTS AND SEAMS IN MEMBRANE SYSTEM A MINIMUM OF 2"
2. DOUBLE LAYER OF MEMBRANE MAY BE APPLIED TO THROUGH WALL FLASHINGS
3. POST INSTALLATION DAMAGE TO THE MEMBRANE SHOULD BE REPAIRED WITH A PATCH PIECE OF MEMBRANE, EXTENDING AT LEAST 2" IN EACH DIRECTION OF THE DAMAGE, WITH THE LEADING EDGE SEALED WITH 3M™ POLYURETHANE SEALANT 540 OR 3M™ POLYURETHANE CONSTRUCTION SEALANT 525.

3M™ Air and Vapor Barrier 3015



SYSTEM: BRICK VENEER / STEEL STUD WALL TITLE: PARAPET DETAIL	DATE: 05/16/13	DETAIL No: 3015-2.0A
	SCALE: N.T.S.	
	DRAWN BY: M.D.H.	

THE DETAILS DEPICTED ABOVE ARE REPRESENTATIVE OF STANDARD CONDITIONS. MODIFICATIONS ARE REQUIRED FOR THE SPECIFIC INSTALLATIONS OF YOUR PROJECT, PLEASE CONTACT A TECHNICAL REPRESENTATIVE FOR ASSISTANCE.



NOTES:

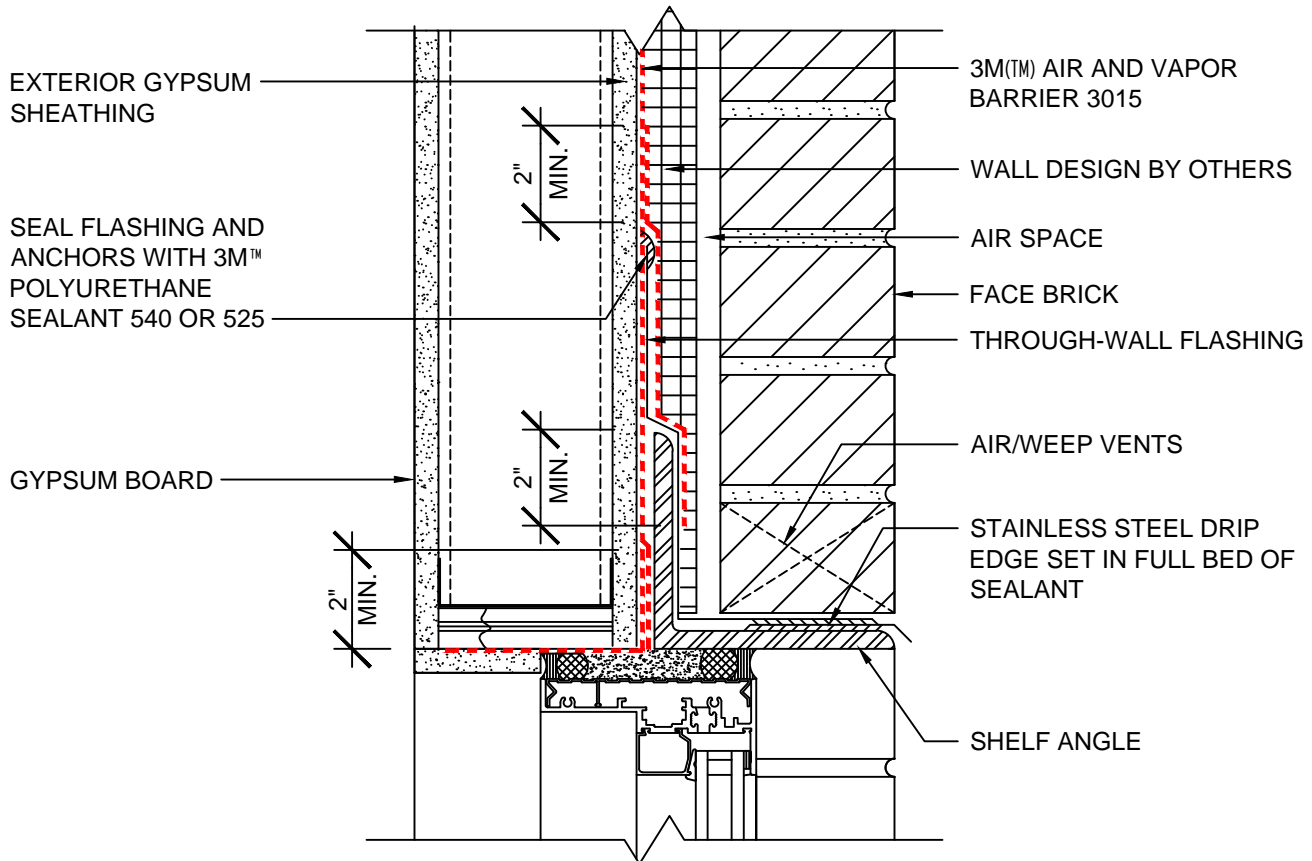
1. LAP JOINTS AND SEAMS IN MEMBRANE SYSTEM A MINIMUM OF 2"
2. DOUBLE LAYER OF MEMBRANE MAY BE APPLIED TO THROUGH WALL FLASHINGS
3. POST INSTALLATION DAMAGE TO THE MEMBRANE SHOULD BE REPAIRED WITH A PATCH PIECE OF MEMBRANE, EXTENDING AT LEAST 2" IN EACH DIRECTION OF THE DAMAGE, WITH THE LEADING EDGE SEALED WITH 3M™ POLYURETHANE SEALANT 540 OR 3M™ POLYURETHANE CONSTRUCTION SEALANT 525.

3M™ Air and Vapor Barrier 3015



SYSTEM: BRICK VENEER / STEEL STUD WALL	DATE: 05/16/13	DETAIL No: 3015-3.0A
	SCALE: N.T.S.	
	DRAWN BY: R.S.J.	
TITLE: BRICK SHELF ANGLE		

THE DETAILS DEPICTED ABOVE ARE REPRESENTATIVE OF STANDARD CONDITIONS. MODIFICATIONS ARE REQUIRED FOR THE SPECIFIC INSTALLATIONS OF YOUR PROJECT, PLEASE CONTACT A TECHNICAL REPRESENTATIVE FOR ASSISTANCE.



NOTES:

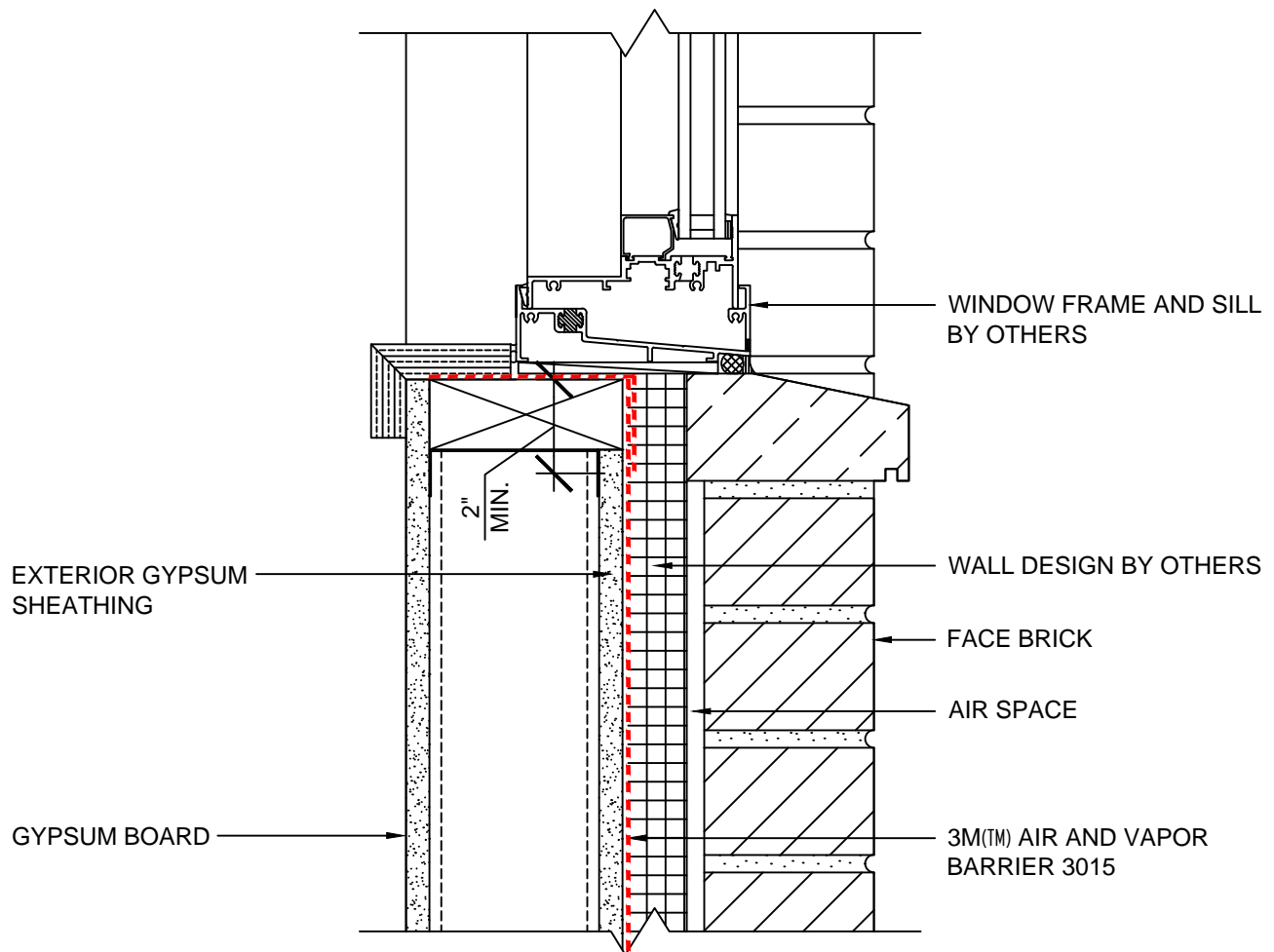
1. LAP JOINTS AND SEAMS IN MEMBRANE SYSTEM A MINIMUM OF 2"
2. DOUBLE LAYER OF MEMBRANE MAY BE APPLIED TO THROUGH WALL FLASHINGS
3. POST INSTALLATION DAMAGE TO THE MEMBRANE SHOULD BE REPAIRED WITH A PATCH PIECE OF MEMBRANE, EXTENDING AT LEAST 2" IN EACH DIRECTION OF THE DAMAGE, WITH THE LEADING EDGE SEALED WITH 3M™ POLYURETHANE SEALANT 540 OR 3M™ POLYURETHANE CONSTRUCTION SEALANT 525.
4. CONNECTION OF AIR AND VAPOR BARRIER TO WINDOW OR DOOR SYSTEM TO BE CONFIRMED WITH WINDOW OR DOOR MANUFACTURER

3M(TM) Air and Vapor Barrier 3015



SYSTEM: BRICK VENEER / STEEL STUD WALL	DATE: 05/16/13	DETAIL No: 3015-4.0A
TITLE: WINDOW HEAD DETAIL	SCALE: N.T.S.	
	DRAWN BY: R.S.J.	

THE DETAILS DEPICTED ABOVE ARE REPRESENTATIVE OF STANDARD CONDITIONS. MODIFICATIONS ARE REQUIRED FOR THE SPECIFIC INSTALLATIONS OF YOUR PROJECT, PLEASE CONTACT A TECHNICAL REPRESENTATIVE FOR ASSISTANCE.



NOTES:

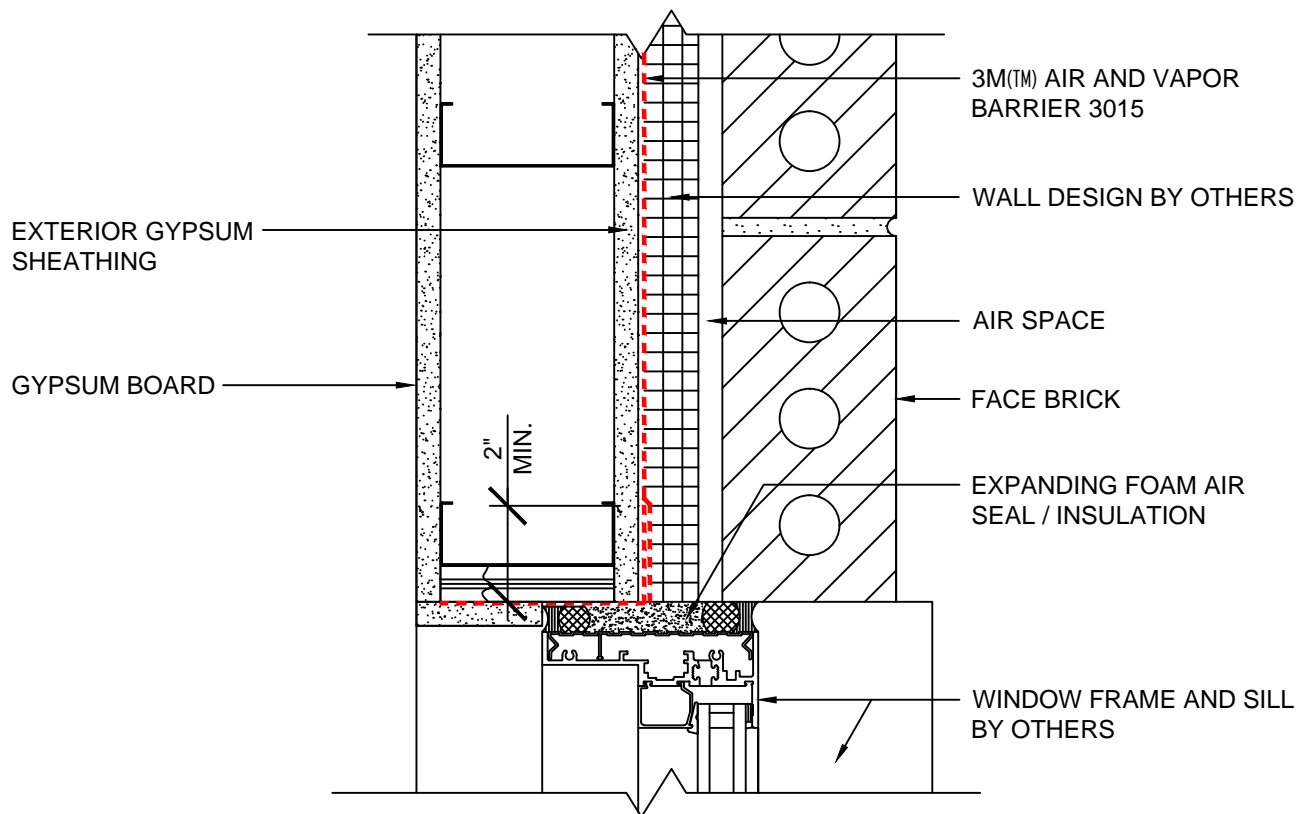
1. LAP JOINTS AND SEAMS IN MEMBRANE SYSTEM A MINIMUM OF 2"
2. CONNECTION OF AIR AND VAPOR BARRIER TO WINDOW OR DOOR SYSTEM TO BE CONFIRMED WITH WINDOW OR DOOR MANUFACTURER
3. POST INSTALLATION DAMAGE TO THE MEMBRANE SHOULD BE REPAIRED WITH A PATCH PIECE OF MEMBRANE, EXTENDING AT LEAST 2" IN EACH DIRECTION OF THE DAMAGE, WITH THE LEADING EDGE SEALED WITH 3M™ POLYURETHANE SEALANT 540 OR 3M™ POLYURETHANE CONSTRUCTION SEALANT 525.

3M(TM) Air and Vapor Barrier 3015



SYSTEM: BRICK VENEER / STEEL STUD WALL	DATE: 05/16/13	DETAIL No: 3015-5.0A
	SCALE: N.T.S.	
	DRAWN BY: R.S.J.	
TITLE: WINDOW SILL DETAIL		

THE DETAILS DEPICTED ABOVE ARE REPRESENTATIVE OF STANDARD CONDITIONS. MODIFICATIONS ARE REQUIRED FOR THE SPECIFIC INSTALLATIONS OF YOUR PROJECT, PLEASE CONTACT A TECHNICAL REPRESENTATIVE FOR ASSISTANCE.



NOTES:

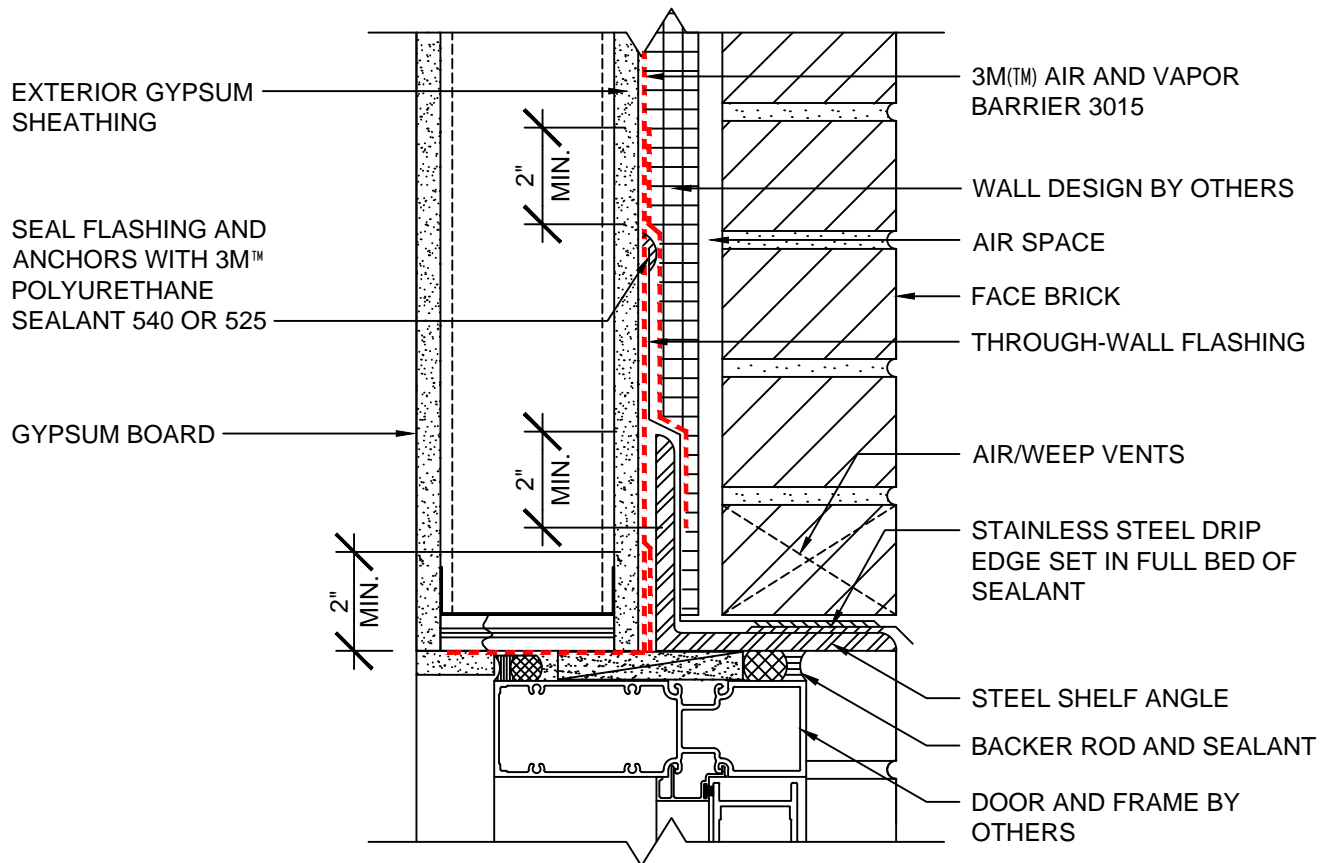
1. LAP JOINTS AND SEAMS IN MEMBRANE SYSTEM A MINIMUM OF 2"
2. CONNECTION OF AIR AND VAPOR BARRIER TO WINDOW OR DOOR SYSTEM TO BE CONFIRMED WITH WINDOW OR DOOR MANUFACTURER
3. POST INSTALLATION DAMAGE TO THE MEMBRANE SHOULD BE REPAIRED WITH A PATCH PIECE OF MEMBRANE, EXTENDING AT LEAST 2" IN EACH DIRECTION OF THE DAMAGE, WITH THE LEADING EDGE SEALED WITH 3M™ POLYURETHANE SEALANT 540 OR 3M™ POLYURETHANE CONSTRUCTION SEALANT 525.

3M(TM) Air and Vapor Barrier 3015



SYSTEM: BRICK VENEER / STEEL STUD WALL	DATE: 05/16/13	DETAIL No: 3015-6.0A
	SCALE: N.T.S.	
	DRAWN BY: R.S.J.	
TITLE: WINDOW JAMB DETAIL		

THE DETAILS DEPICTED ABOVE ARE REPRESENTATIVE OF STANDARD CONDITIONS. MODIFICATIONS ARE REQUIRED FOR THE SPECIFIC INSTALLATIONS OF YOUR PROJECT, PLEASE CONTACT A TECHNICAL REPRESENTATIVE FOR ASSISTANCE.



NOTES:

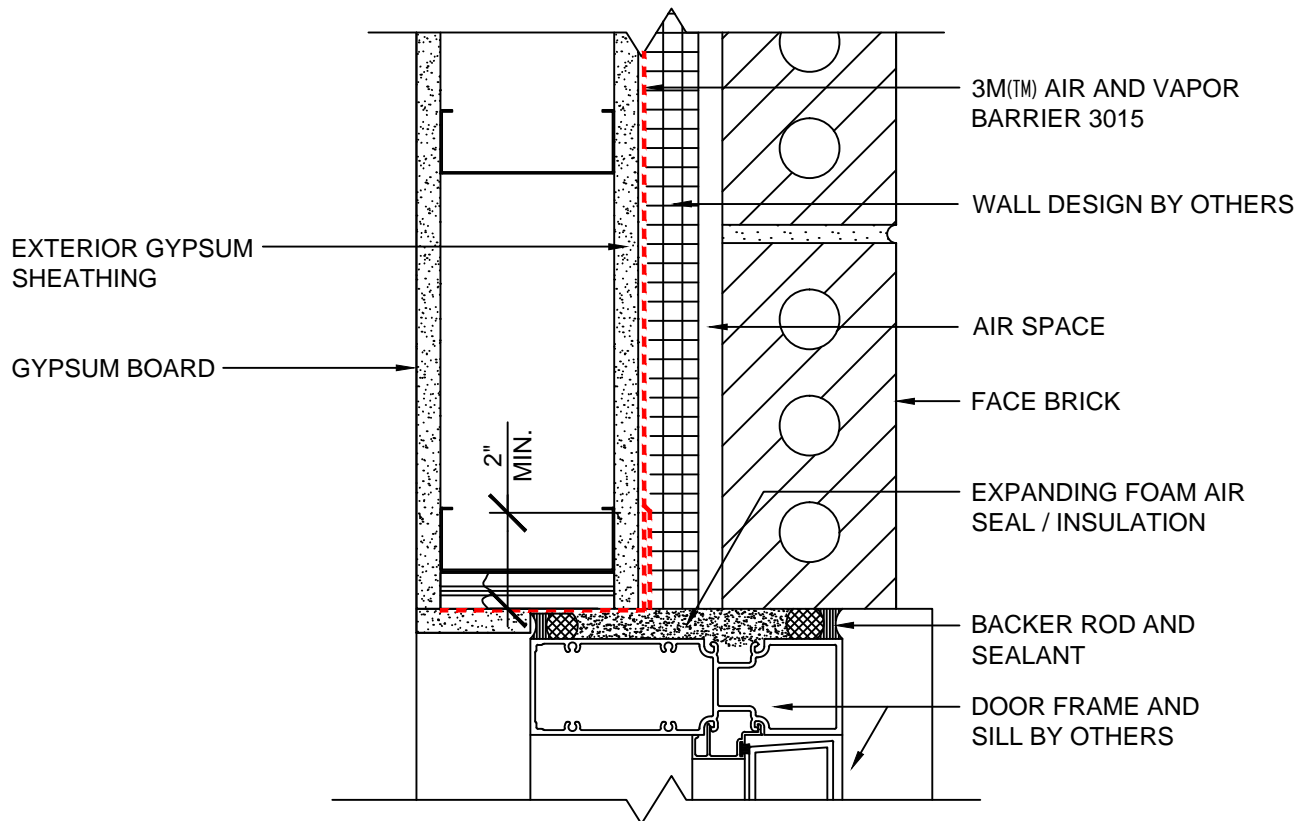
1. LAP JOINTS AND SEAMS IN MEMBRANE SYSTEM A MINIMUM OF 2"
2. DOUBLE LAYER OF MEMBRANE MAY BE APPLIED TO THROUGH WALL FLASHINGS
3. POST INSTALLATION DAMAGE TO THE MEMBRANE SHOULD BE REPAIRED WITH A PATCH PIECE OF MEMBRANE, EXTENDING AT LEAST 2" IN EACH DIRECTION OF THE DAMAGE, WITH THE LEADING EDGE SEALED WITH 3M™ POLYURETHANE SEALANT 540 OR 3M™ POLYURETHANE CONSTRUCTION SEALANT 525.
4. CONNECTION OF AIR AND VAPOR BARRIER TO WINDOW OR DOOR SYSTEM TO BE CONFIRMED WITH WINDOW OR DOOR MANUFACTURER

3M™ Air and Vapor Barrier 3015



SYSTEM: BRICK VENEER / STEEL STUD WALL	DATE: 05/16/13	DETAIL No: 3015-7.0A
	SCALE: N.T.S.	
TITLE: DOOR HEAD DETAIL	DRAWN BY: R.S.J.	

THE DETAILS DEPICTED ABOVE ARE REPRESENTATIVE OF STANDARD CONDITIONS. MODIFICATIONS ARE REQUIRED FOR THE SPECIFIC INSTALLATIONS OF YOUR PROJECT, PLEASE CONTACT A TECHNICAL REPRESENTATIVE FOR ASSISTANCE.



NOTES:

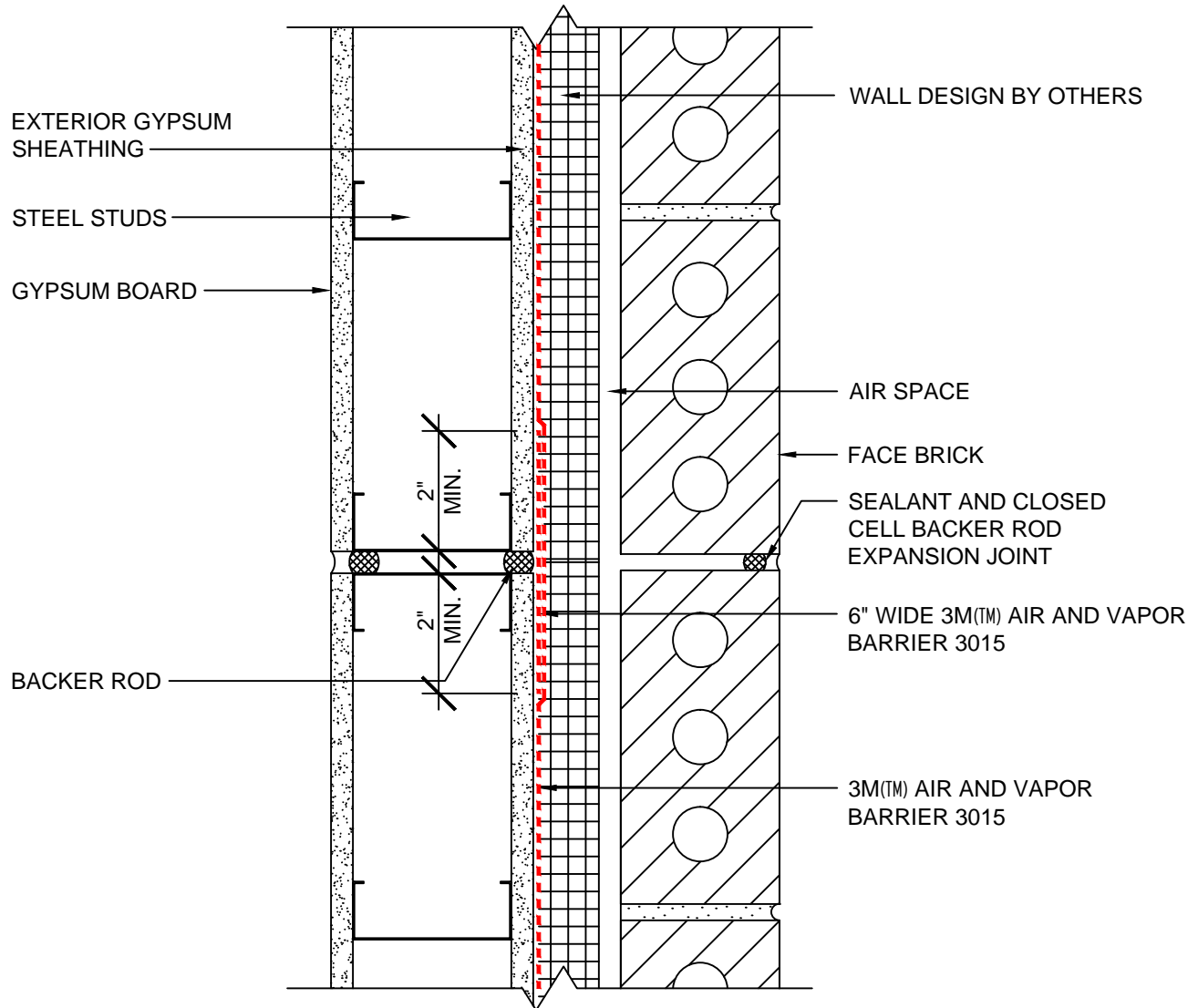
1. LAP JOINTS AND SEAMS IN MEMBRANE SYSTEM A MINIMUM OF 2"
2. CONNECTION OF AIR AND VAPOR BARRIER TO WINDOW OR DOOR SYSTEM TO BE CONFIRMED WITH WINDOW OR DOOR MANUFACTURER
3. POST INSTALLATION DAMAGE TO THE MEMBRANE SHOULD BE REPAIRED WITH A PATCH PIECE OF MEMBRANE, EXTENDING AT LEAST 2" IN EACH DIRECTION OF THE DAMAGE, WITH THE LEADING EDGE SEALED WITH 3M™ POLYURETHANE SEALANT 540 OR 3M™ POLYURETHANE CONSTRUCTION SEALANT 525.

3M(TM) Air and Vapor Barrier 3015



SYSTEM: BRICK VENEER / STEEL STUD WALL	DATE: 05/16/13	DETAIL No: 3015-8.0A
	SCALE: N.T.S.	
TITLE: DOOR JAMB DETAIL	DRAWN BY: R.S.J.	

THE DETAILS DEPICTED ABOVE ARE REPRESENTATIVE OF STANDARD CONDITIONS. MODIFICATIONS ARE REQUIRED FOR THE SPECIFIC INSTALLATIONS OF YOUR PROJECT, PLEASE CONTACT A TECHNICAL REPRESENTATIVE FOR ASSISTANCE.



NOTES:

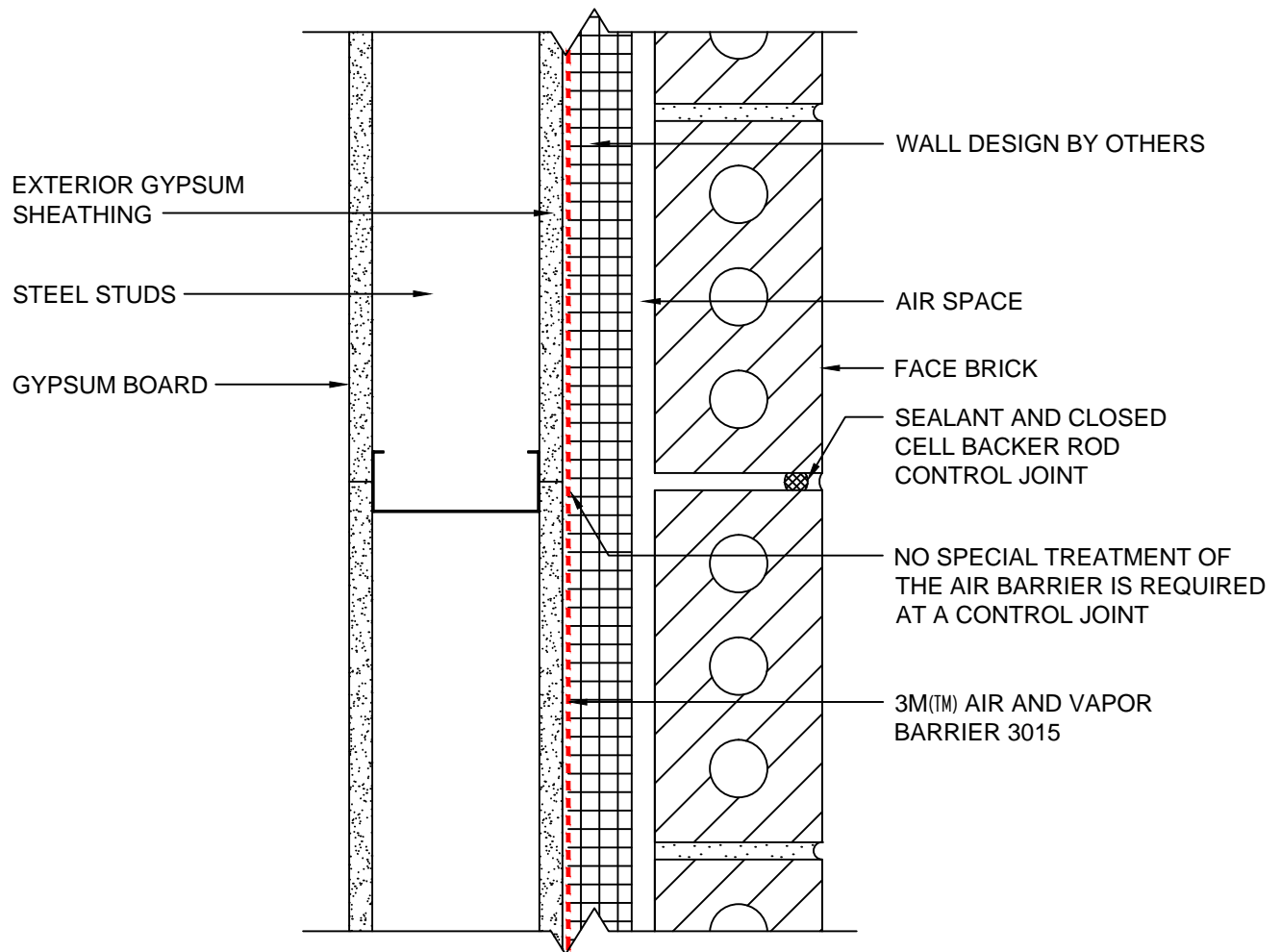
1. LAP JOINTS AND SEAMS IN MEMBRANE SYSTEM A MINIMUM OF 2"
2. POST INSTALLATION DAMAGE TO THE MEMBRANE SHOULD BE REPAIRED WITH A PATCH PIECE OF MEMBRANE, EXTENDING AT LEAST 2" IN EACH DIRECTION OF THE DAMAGE, WITH THE LEADING EDGE SEALED WITH 3M™ POLYURETHANE SEALANT 540 OR 3M™ POLYURETHANE CONSTRUCTION SEALANT 525.

3M(TM) Air and Vapor Barrier 3015



SYSTEM: BRICK VENEER / STEEL STUD WALL	DATE: 05/16/13	DETAIL No: 3015-9.0A
	SCALE: N.T.S.	
	DRAWN BY: M.D.H.	
TITLE: EXPANSION JOINT DETAIL		

THE DETAILS DEPICTED ABOVE ARE REPRESENTATIVE OF STANDARD CONDITIONS. MODIFICATIONS ARE REQUIRED FOR THE SPECIFIC INSTALLATIONS OF YOUR PROJECT, PLEASE CONTACT A TECHNICAL REPRESENTATIVE FOR ASSISTANCE.



NOTES:

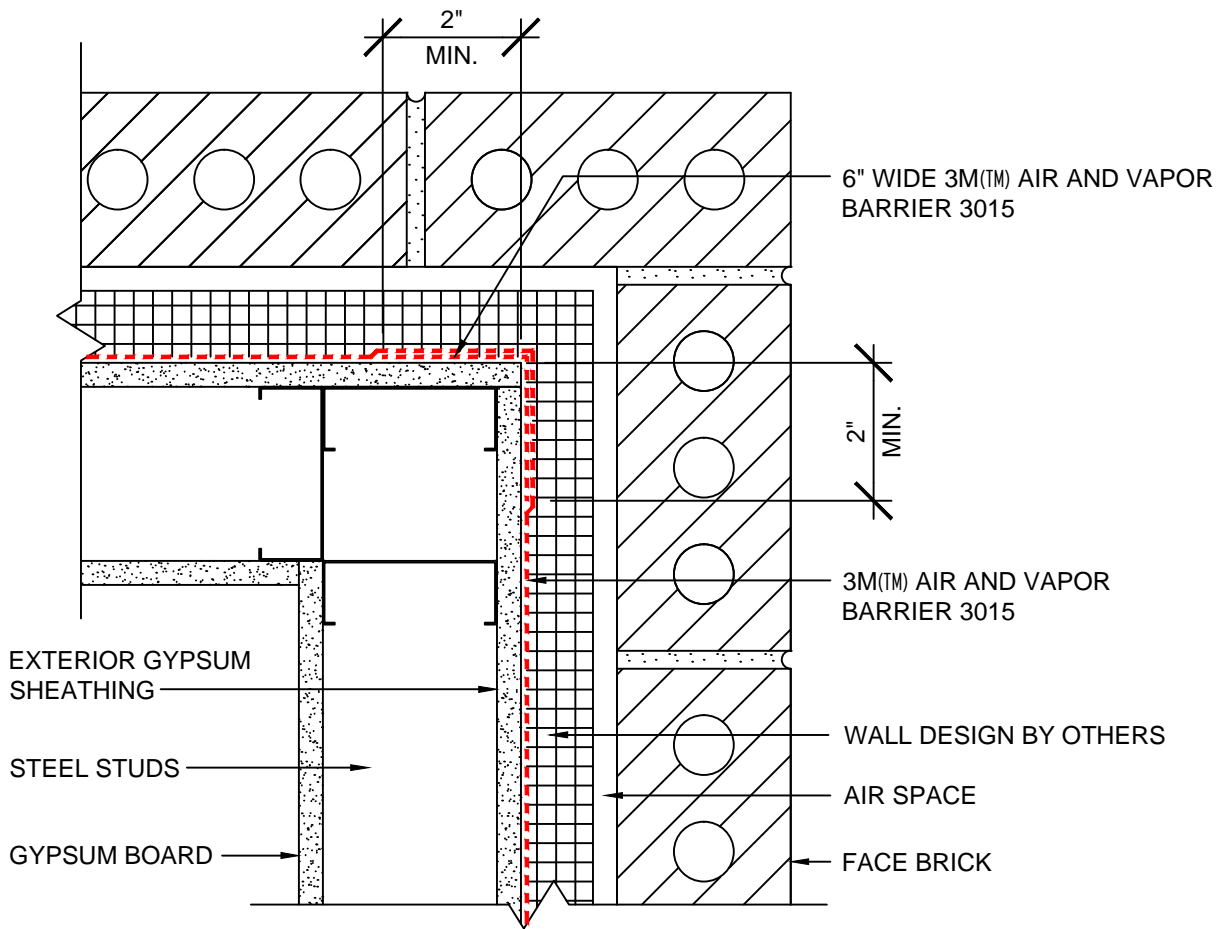
1. LAP JOINTS AND SEAMS IN MEMBRANE SYSTEM A MINIMUM OF 2"
2. POST INSTALLATION DAMAGE TO THE MEMBRANE SHOULD BE REPAIRED WITH A PATCH PIECE OF MEMBRANE, EXTENDING AT LEAST 2" IN EACH DIRECTION OF THE DAMAGE, WITH THE LEADING EDGE SEALED WITH 3M™ POLYURETHANE SEALANT 540 OR 3M™ POLYURETHANE CONSTRUCTION SEALANT 525.

3M(TM) Air and Vapor Barrier 3015



SYSTEM: BRICK VENEER / STEEL STUD WALL	DATE: 05/16/13	DETAIL No:
TITLE: CONTROL JOINT DETAIL	SCALE: N.T.S.	3015-10.0A
	DRAWN BY: M.D.H.	

THE DETAILS DEPICTED ABOVE ARE REPRESENTATIVE OF STANDARD CONDITIONS. MODIFICATIONS ARE REQUIRED FOR THE SPECIFIC INSTALLATIONS OF YOUR PROJECT, PLEASE CONTACT A TECHNICAL REPRESENTATIVE FOR ASSISTANCE.



NOTES:

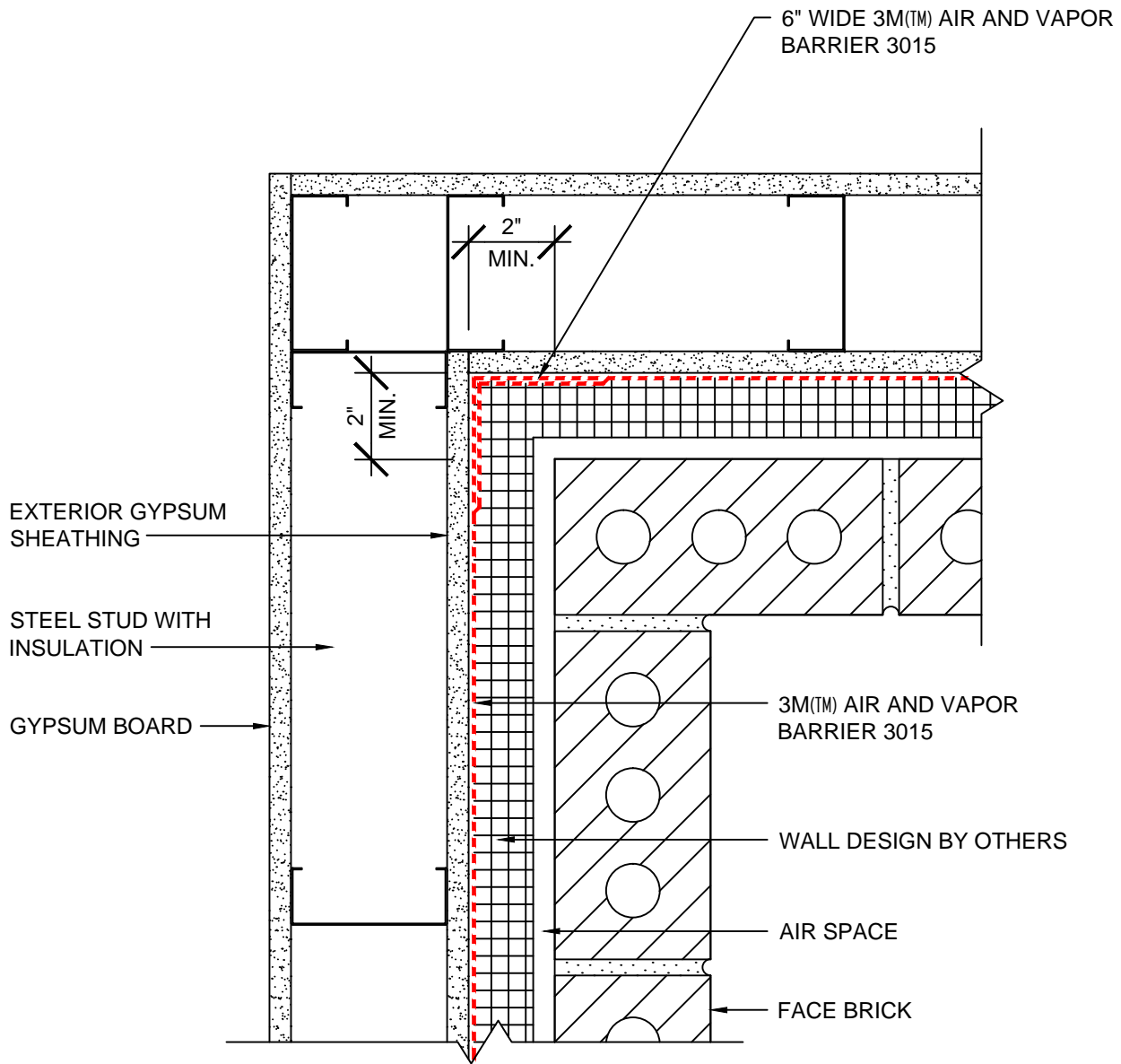
1. LAP JOINTS AND SEAMS IN MEMBRANE SYSTEM A MINIMUM OF 2"
2. POST INSTALLATION DAMAGE TO THE MEMBRANE SHOULD BE REPAIRED WITH A PATCH PIECE OF MEMBRANE, EXTENDING AT LEAST 2" IN EACH DIRECTION OF THE DAMAGE, WITH THE LEADING EDGE SEALED WITH 3M™ POLYURETHANE SEALANT 540 OR 3M™ POLYURETHANE CONSTRUCTION SEALANT 525.

3M(TM) Air and Vapor Barrier 3015



SYSTEM: BRICK VENEER / STUD WALL	DATE: 05/16/13	DETAIL No: 3015-11.0A
	SCALE: N.T.S.	
	DRAWN BY: M.D.H.	
TITLE: EXTERIOR CORNER DETAIL		

THE DETAILS DEPICTED ABOVE ARE REPRESENTATIVE OF STANDARD CONDITIONS. MODIFICATIONS ARE REQUIRED FOR THE SPECIFIC INSTALLATIONS OF YOUR PROJECT, PLEASE CONTACT A TECHNICAL REPRESENTATIVE FOR ASSISTANCE.



NOTES:

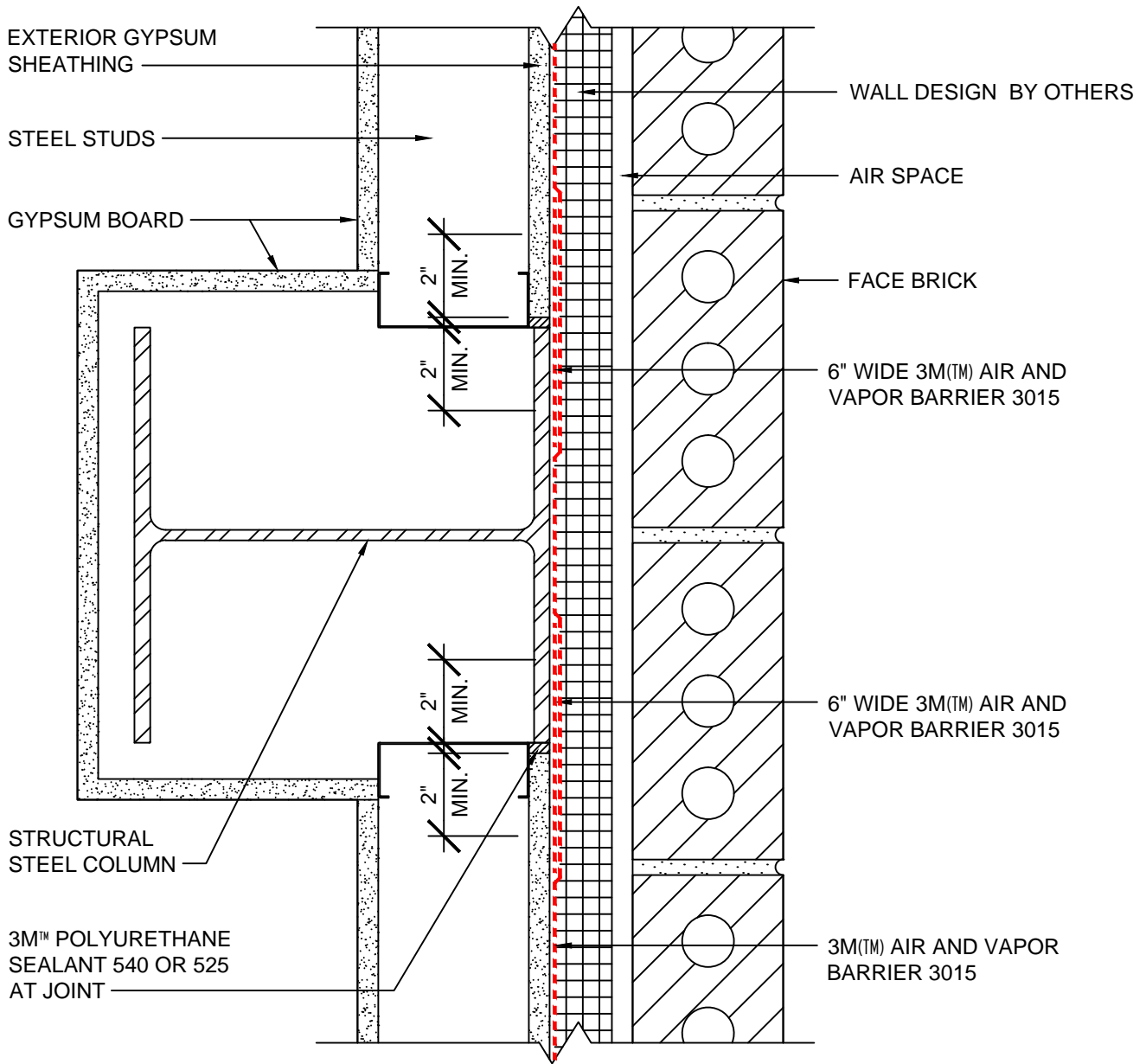
1. LAP JOINTS AND SEAMS IN MEMBRANE SYSTEM A MINIMUM OF 2"
2. POST INSTALLATION DAMAGE TO THE MEMBRANE SHOULD BE REPAIRED WITH A PATCH PIECE OF MEMBRANE, EXTENDING AT LEAST 2" IN EACH DIRECTION OF THE DAMAGE, WITH THE LEADING EDGE SEALED WITH 3M™ POLYURETHANE SEALANT 540 OR 3M™ POLYURETHANE CONSTRUCTION SEALANT 525.

3M(TM) Air and Vapor Barrier 3015



SYSTEM: BRICK VENEER / STUD WALL	DATE: 05/16/13	DETAIL No: 3015-12.0A
	SCALE: N.T.S.	
	DRAWN BY: M.D.H.	
TITLE: INTERIOR CORNER DETAIL		

THE DETAILS DEPICTED ABOVE ARE REPRESENTATIVE OF STANDARD CONDITIONS. MODIFICATIONS ARE REQUIRED FOR THE SPECIFIC INSTALLATIONS OF YOUR PROJECT, PLEASE CONTACT A TECHNICAL REPRESENTATIVE FOR ASSISTANCE.



NOTES:

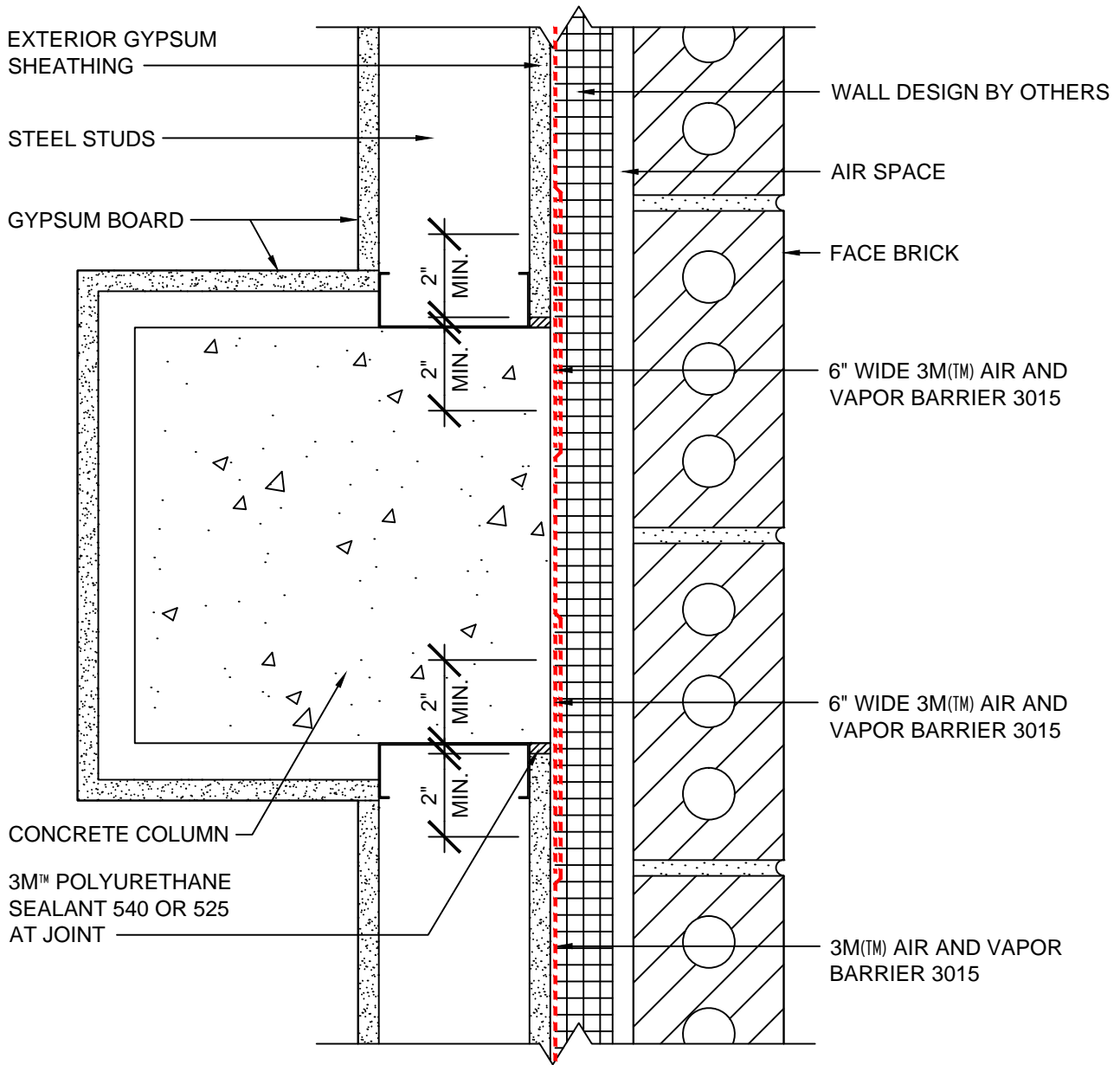
1. LAP JOINTS AND SEAMS IN MEMBRANE SYSTEM A MINIMUM OF 2"
2. POST INSTALLATION DAMAGE TO THE MEMBRANE SHOULD BE REPAIRED WITH A PATCH PIECE OF MEMBRANE, EXTENDING AT LEAST 2" IN EACH DIRECTION OF THE DAMAGE, WITH THE LEADING EDGE SEALED WITH 3M™ POLYURETHANE SEALANT 540 OR 3M™ POLYURETHANE CONSTRUCTION SEALANT 525.

3M™ Air and Vapor Barrier 3015



SYSTEM: BRICK VENEER / STEEL STUD WALL	DATE: 05/16/13	DETAIL No:
	SCALE: N.T.S.	3015-13.0A
	DRAWN BY: M.D.H.	
TITLE: STEEL COLUMN CONNECTION DETAIL		

THE DETAILS DEPICTED ABOVE ARE REPRESENTATIVE OF STANDARD CONDITIONS. MODIFICATIONS ARE REQUIRED FOR THE SPECIFIC INSTALLATIONS OF YOUR PROJECT, PLEASE CONTACT A TECHNICAL REPRESENTATIVE FOR ASSISTANCE.



NOTES:

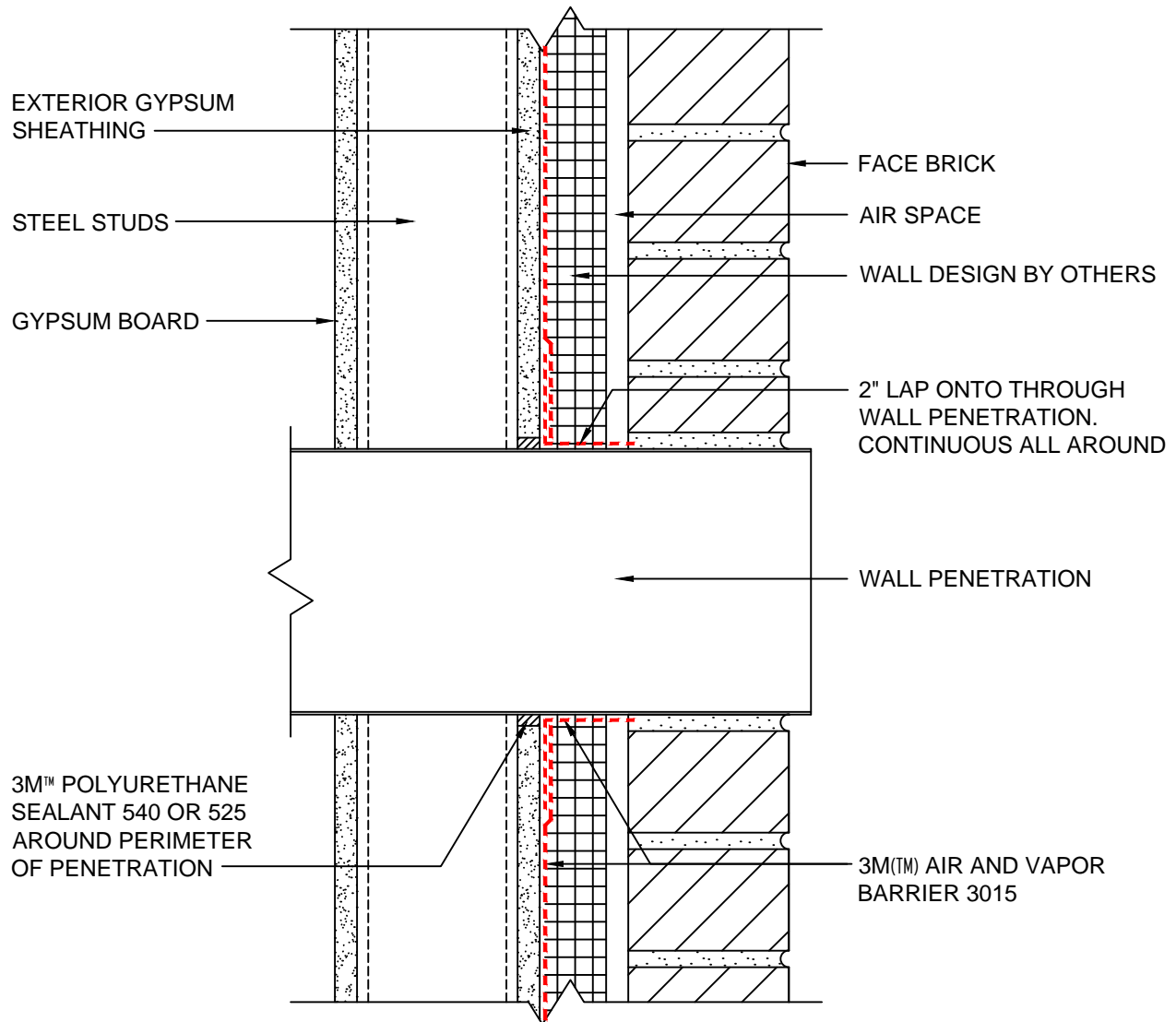
1. LAP JOINTS AND SEAMS IN MEMBRANE SYSTEM A MINIMUM OF 2"
2. POST INSTALLATION DAMAGE TO THE MEMBRANE SHOULD BE REPAIRED WITH A PATCH PIECE OF MEMBRANE, EXTENDING AT LEAST 2" IN EACH DIRECTION OF THE DAMAGE, WITH THE LEADING EDGE SEALED WITH 3M™ POLYURETHANE SEALANT 540 OR 3M™ POLYURETHANE CONSTRUCTION SEALANT 525.

3M™ Air and Vapor Barrier 3015



SYSTEM: BRICK VENEER / STEEL STUD WALL	DATE: 05/16/13	DETAIL No: 3015-14.0A
	SCALE: N.T.S.	
	DRAWN BY: M.D.H.	
TITLE: CONCRETE COLUMN CONNECTION DETAIL		

THE DETAILS DEPICTED ABOVE ARE REPRESENTATIVE OF STANDARD CONDITIONS. MODIFICATIONS ARE REQUIRED FOR THE SPECIFIC INSTALLATIONS OF YOUR PROJECT, PLEASE CONTACT A TECHNICAL REPRESENTATIVE FOR ASSISTANCE.



NOTES:

1. LAP JOINTS AND SEAMS IN MEMBRANE SYSTEM A MINIMUM OF 2"
2. POST INSTALLATION DAMAGE TO THE MEMBRANE SHOULD BE REPAIRED WITH A PATCH PIECE OF MEMBRANE, EXTENDING AT LEAST 2" IN EACH DIRECTION OF THE DAMAGE, WITH THE LEADING EDGE SEALED WITH 3M™ POLYURETHANE SEALANT 540 OR 3M™ POLYURETHANE CONSTRUCTION SEALANT 525.

3M™ Air and Vapor Barrier 3015



SYSTEM: BRICK VENEER / STEEL STUD WALL	DATE: 05/16/13	DETAIL No: 3015-15.0A
	SCALE: N.T.S.	
	DRAWN BY: M.D.H.	
TITLE: THROUGH WALL PIPE OR DUCT PENETRATION		

THE DETAILS DEPICTED ABOVE ARE REPRESENTATIVE OF STANDARD CONDITIONS. MODIFICATIONS ARE REQUIRED FOR THE SPECIFIC INSTALLATIONS OF YOUR PROJECT, PLEASE CONTACT A TECHNICAL REPRESENTATIVE FOR ASSISTANCE.