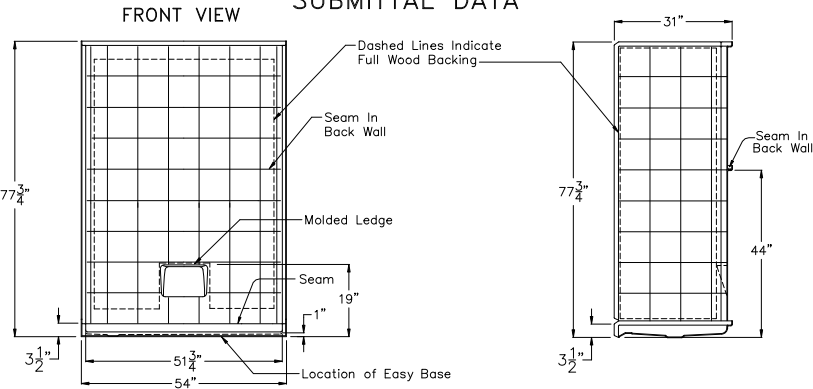


HANDED BY THE DRAIN

Model APF5430 BF .75 5P L/R

Comfort Series  
SUBMITTAL DATA

SIDE VIEW



5 Piece Sectional BF Shower

The sectional shower shall be APF5430 BF 1.0 5 Piece left or right drain. Finished surface shall be of a sanitary-grade polyester gelcoat exhibiting a minimal thickness of 15 dry mills, and a finished cured Barcoal hardness of 80-90 as tested with ASTM D-2583. Unit construction shall be of molded reinforced fiberglass with a minimum 15% fiberglass content.

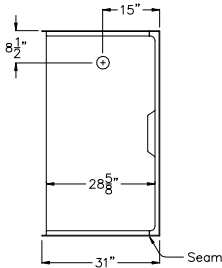
The unit has outside dimensions of: 54" x 31" x 77 3/4". The 5 piece shower shall meet: ANSI Z124.1.2, HUD, FHA, BOCA, Home Innovation Research Lab, and shall meet the requirements the requirements of the Southern Building Code.

NOTE: DUE TO THE COMPACT SIZE OF THIS PRODUCT, THE INTERIOR DEPTH DOES NOT COMPLY WITH IRC, IPC, AND UPC CODES.

The enclosure shall be equipped with the following installed accessories:

- 1) Low entry 1" Threshold,
- 2) Tile Finish,
- 3) Low Molded Shelf,
- 4) Five Piece Sectional Design,
- 5) Two Piece Back Wall,
- 6) Left Hand Drain Location,
- 7) Full Wood Backing On Walls,
- 8) Factory installed Easy Base self sustaining bottom.

TOP VIEW



STATE HANDING WHEN ORDERING  
HANDED BY THE DRAIN.  
Left Hand Shown, Right Available

DUE TO THE NATURE OF THE MATERIALS INVOLVED  
UNIT DIMENSIONS MAY VARY ± 1/2 INCH

ACCESSIBILITY PROFESSIONALS

Drawing#: APF5430 BF .75 5P FWB  
Easy Base L/R

Approved By Print Name: Date Approved: Date: 3-31-09 Revised: 6-3-15

Approved By Signature: Wholesaler: Quote No.

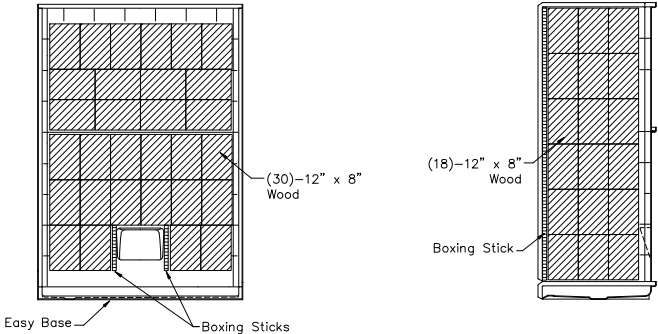
ACCESSIBILITY PROFESSIONALS  
4 ALLIANCE BLVD. UNIT 123 BARRIE, ONTARIO CANADA L4M 7G3  
1 (877) 947-7769 - www.AccessibilityPro.com

Model APF5430 BF .75 5P L/R-BP

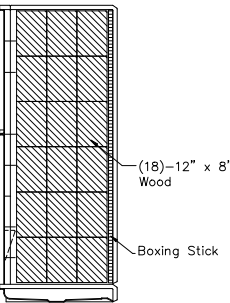
Board Placement Drawing  
SUBMITTAL DATA

FRONT VIEW

SIDE VIEW



SIDE VIEW



DUE TO THE NATURE OF THE MATERIALS INVOLVED  
UNIT DIMENSIONS MAY VARY ± 1/2 INCH

|              |   |               |                 |
|--------------|---|---------------|-----------------|
| Job Name:    | ACCESSIBILITY PROFESSIONALS                         |               |                 |
| Model No.:   | Drawing#: APF5430 BF .75 5P FWB<br>Easy Base L/R-BP |               |                 |
| Approved by: | Date Approved:                                      | Date: 3-31-09 | Revised: 6-3-15 |
| Rep.:        | Wholesaler:   | Quote No.:    |                 |

ACCESSIBILITY PROFESSIONALS  
4 ALLIANCE BLVD. UNIT 123 BARRIE, ONTARIO CANADA L4M 7G3  
1 (877) 947-7769 - www.AccessibilityPro.com