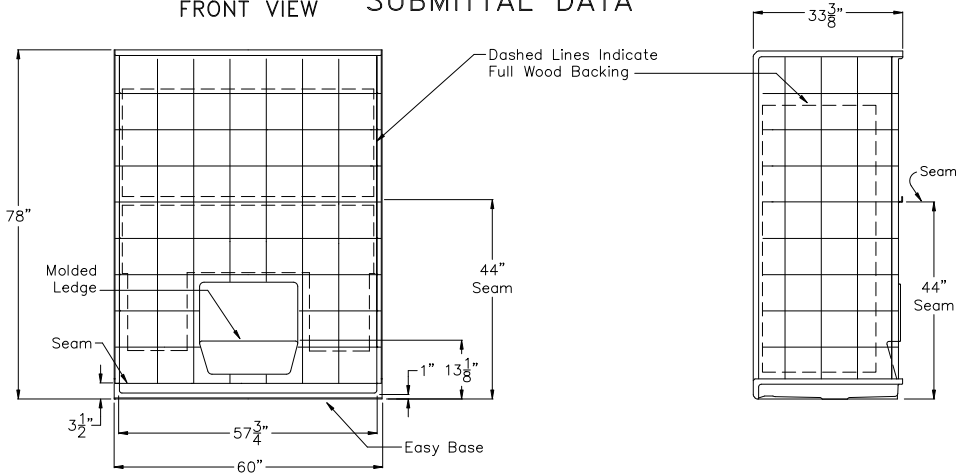


Comfort Series
 SUBMITTAL DATA

SIDE VIEW



5 Piece Sectional BF Shower

The sectional shower shall be APF6033 BF 1.0, 5 Piece left or right drain. Finished surface shall be of a sanitary-grade polyester gelcoat exhibiting a minimal thickness of 15 dry mils, and a finished cured Barcoal hardness of 80-90 as tested with ASTM D-2583. Unit construction shall be of molded reinforced fiberglass with a minimum 15% fiberglass content.

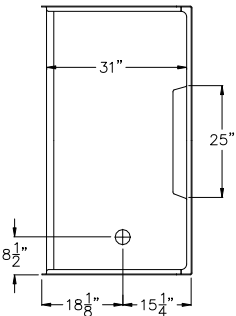
The unit has outside dimensions of: 60" x 33 3/8" x 78".

The 5 piece shower shall meet CSA B45.5, IAPMO Z124, HUD, FHA, Home Innovation Research Lab, and shall meet the requirements of the Southern Building Code.

The enclosure shall be equipped with the following installed accessories:

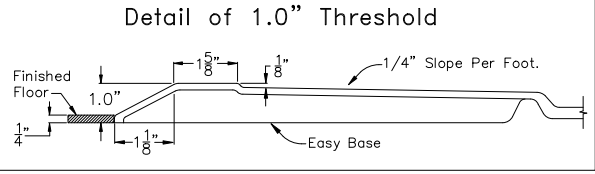
- 1) Low entry 1.0" Threshold,
- 2) Tile Finish,
- 3) Low Molded Shelf,
- 4) Five Piece Sectional Design,
- 5) Two Piece Back Wall,
- 6) Left Or Right Drain Location,
- 7) Full Wood Backing On Walls,
- 8) Factory installed Easy Base self sustaining bottom.

TOP VIEW



STATE HANDING WHEN ORDERING
 HANDED BY THE DRAIN.
 Right Hand Shown, Left Available

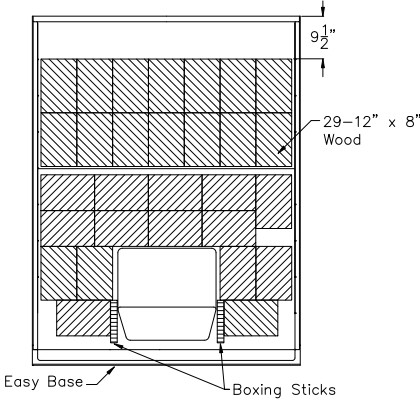
DUE TO THE NATURE OF THE MATERIALS INVOLVED
 UNIT DIMENSIONS MAY VARY ± 1/2 INCH



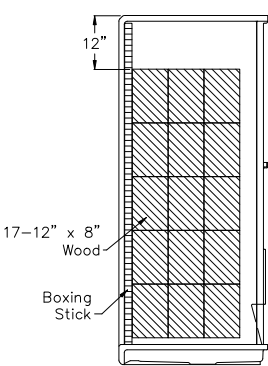
Approved By Print Name:	Date Approved:	Date: 6-18-14	Revised: 5-24-16
Approved By Signature:	Wholesaler:	Quote No.	
ACCESSIBILITY PROFESSIONALS 4 ALLIANCE BLVD. UNIT 123 BARRIE, ONTARIO CANADA L4M 7G3 1 (877) 947-7769 - www.AccessibilityPro.com			

Board Placement Drawing
 SUBMITTAL DATA

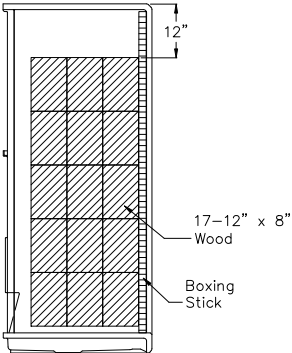
FRONT VIEW



SIDE VIEW



SIDE VIEW



DUE TO THE NATURE OF THE MATERIALS
 UNIT DIMENSIONS MAY VARY ± 1/2 INCH

Job Name:		ACCESSIBILITY PROFESSIONALS	
Model No.:		Drawing#: APF6033 BF 1.0 5P FWB Easy Base L-R Drain-BP	
Approved by:	Date Approved:	Date: 3-31-09	Revised: 5-24-16
Rep.:	Wholesaler:	Quote No.	
ACCESSIBILITY PROFESSIONALS 4 ALLIANCE BLVD. UNIT 123 BARRIE, ONTARIO CANADA L4M 7G3 1 (877) 947-7769 - www.AccessibilityPro.com			