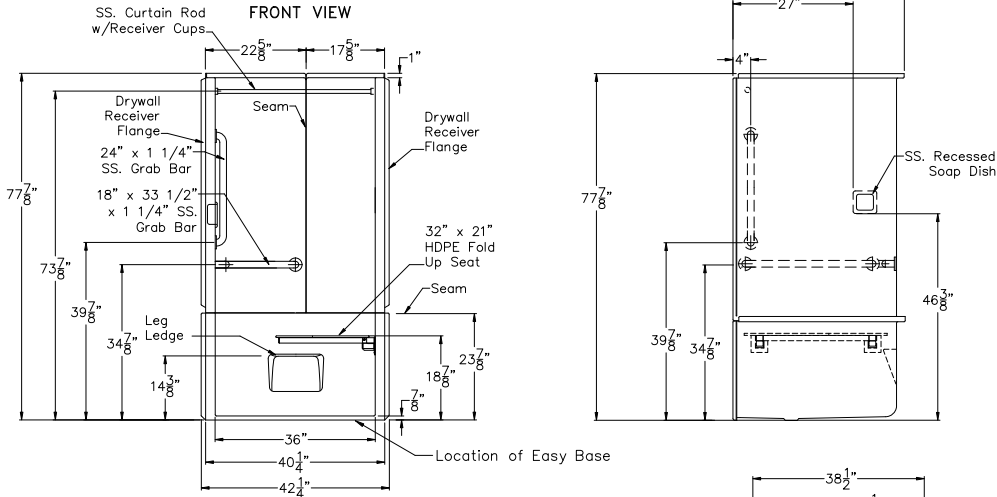


Freedom Showers
SUBMITTAL DATA

SIDE VIEW



Transfer Shower Stall

The shower enclosure shall be Model APFQ 3637 BF .875 three piece right or left. Finished surface shall be of a sanitary grade applied acrylic. The base shall be attached to the sump of the unit in such a manner to form an integral part with an inner and outer coating of polyester resin. The unit shall have outside dimensions of 42 1/4" x 38 1/2" x 77 7/8". Unit complies with UPC, CSA B45.5, ADA, ANSI A117.1, HUD-UM73, and ANSI Z124.1.2.

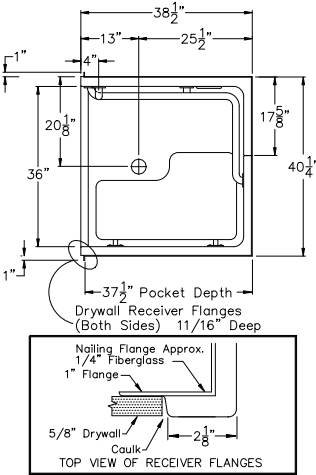
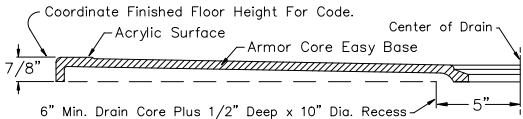
The enclosure shall be equipped with the following installed accessories:

- 1) One 18" x 33 1/2" x 1 1/4" diameter stainless steel horizontal L-grab bar, 2) One 24" x 1 1/4" diameter stainless steel vertical grab bar on the valve wall, both with 1 1/2" statute clearance, mounted with stainless steel bolts, and secured from the rear with 3" x 3" x 11 gauge metal mounting plates, 3) 32" x 21" frameless white HDPE fold up seat, 4) Molded recessed receiver flange on both sides, 5) One inch diameter, 18 gauge stainless steel curtain rod with receiver cups, 6) Stainless steel recessed soap dish in the valve wall, 7) Full reinforced backing on all walls, 8) Armor Core Easy Base, 9) 7/8" threshold.

Available accessories: 10) Valve package, 11) Green anti-bacterial shower curtain with hooks, 12) White weighted shower curtain with hook, 13) Nurses call box drilling.

NOTE: THIS UNIT WILL NOT ACCEPT A DOOR!

Detail of 7/8" Threshold



STATE HANDING WHEN ORDERING
HANDED BY THE VALVE
Left Hand Shown, Right Available

DUE TO THE NATURE OF THE MATERIALS INVOLVED
UNIT DIMENSIONS MAY VARY ± 1/2 INCH

ACCESSIBILITY PROFESSIONALS

Approved By Print Name:

Drawing#: APFQ 3637 BF 3P .875 SLB VB
FHDP CR RSD RRF FWB Easy Base Left

Approved By Signature:

Date:

Date: 3-31-09

Revised: 3-5-25

Rep.:

Wholesaler:

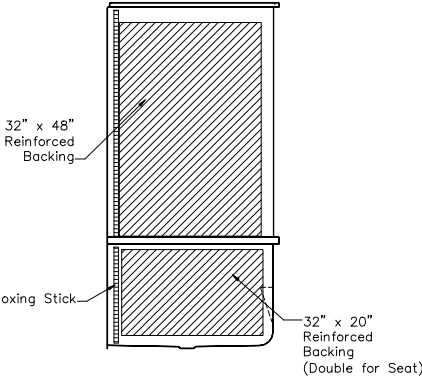
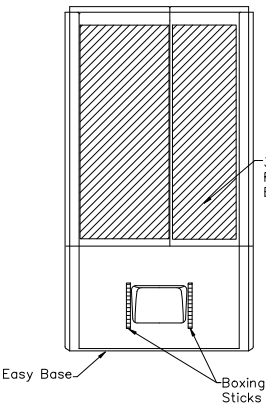
Quote No.

ACCESSIBILITY PROFESSIONALS
11 VICTORIA ST. UNIT B3 BARRIE, ONTARIO CANADA L4N 6T3
1 (877) 947-7769 - www.FreedomShowers.com

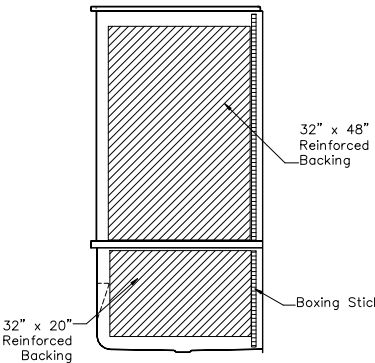
Backing Placement

FRONT VIEW

SIDE VIEW



SIDE VIEW



DUE TO THE NATURE OF THE MATERIALS
INVOLVED UNIT DIMENSIONS MAY VARY
± 1/2 INCH

Job Name:		ACCESSIBILITY PROFESSIONALS	
Approved by Print Name:		Drawing#: APFQ 3637 BF 3P .875 SLB VB FHDP CR RSD RRF FWB Easy Base Left-BP	
Approved by Signature:		Date:	Date: 3-31-09 Revised: 3-5-25
Rep.:		Wholesaler:	Quote No.
ACCESSIBILITY PROFESSIONALS 11 VICTORIA ST. UNIT B3 BARRIE, ONTARIO CANADA L4N 6T3 1 (877) 947-7769 - www.FreedomShowers.com			