

**Acoustical Surfaces, Inc.**

123 Columbia Court North,  
Suite 201  
Chaska, MN 55318  
Tel: (952)-448-5300  
Fax: (952)-448-2613  
1-(800)-854-2948

www.acousticalsurfaces.com  
sales@acousticalsurfaces.com

**File No.**

ECHO ELIMINATOR.DWG

**Issue Date**

7/8/2010

**Revised**

**Drawn By**

MTH

**Checked By**

**PROJECT**

**DRAWING TITLE**

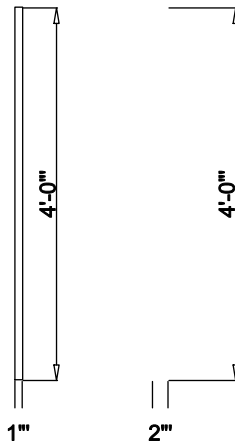
ECHO  
ELIMINATOR

**DRAWING NO.**

AS5.0

NOTE: ALL PANEL SIZES AVAILABLE IN BOTH 1" AND 2"

1 FRONT ELEVATION  
1/2"=1'-0"



2 SIDE ELEVATION  
1/2"=1'-0"

3 PERSPECTIVE  
N.T.S.